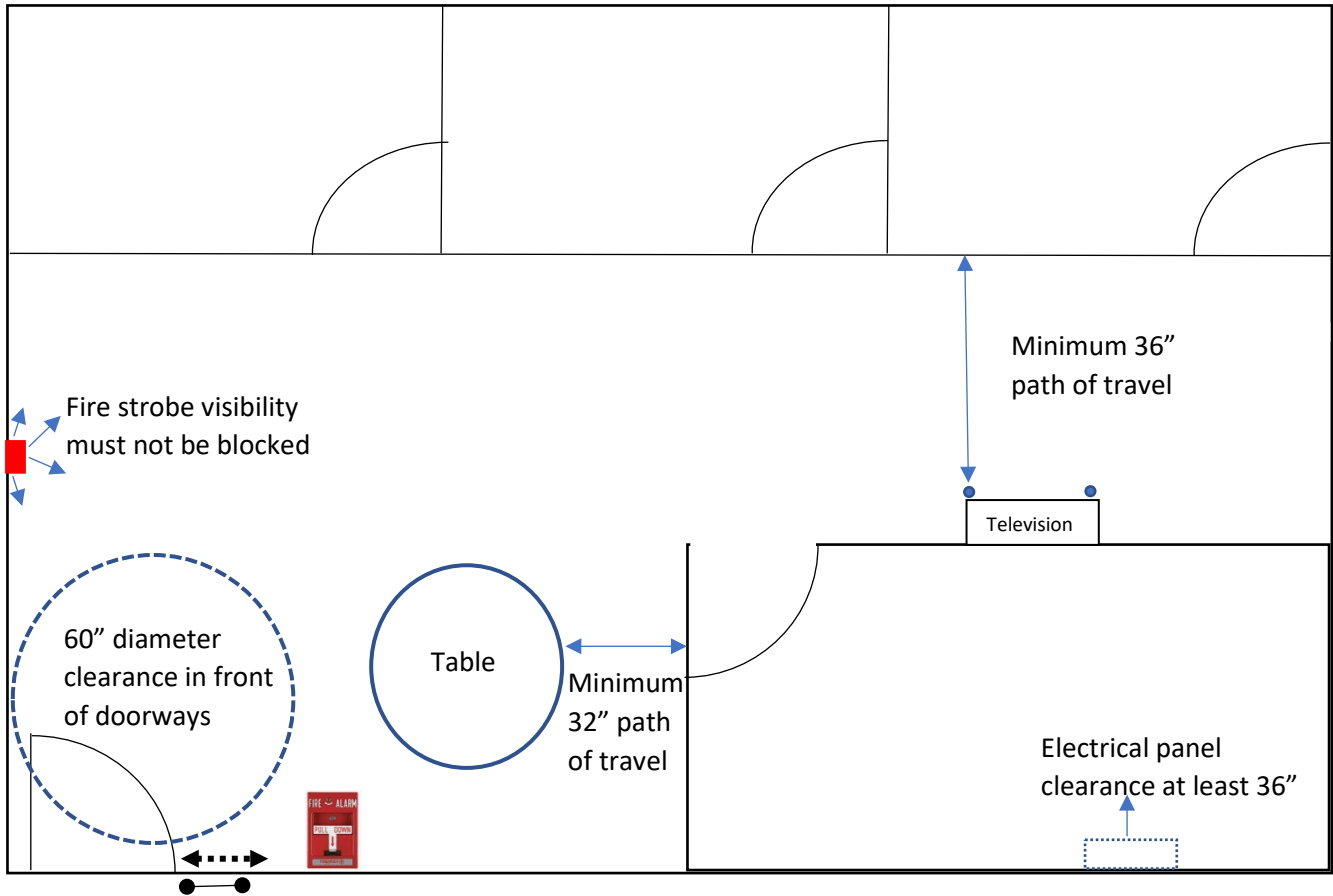







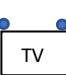



Furniture purchases: Considerations for ADA compliance



Legend

Door and swing direction	
Doorway wheel chair turn around area, 60" diameter	
The "pull" side of the door requires 18" clearance	
The "push" side of the door requires 12" clearance	
Distance between furniture or walls must be at least 32"	
Fire strobe visibility must not be blocked	
Clearance from electrical panels must be at least 36"	
Televisions in paths of travel and egress must have a width less than 4" or have poles installed	
Fire alarm pull stations must not be blocked	

I hereby certify that the furniture I am purchasing does not attach to any walls or floors, provides 60" diameter clearance of all doorways, provides 18" clearance on the "pull" side and 12" clearance on the "push" side of all doorways, provides 32" clearance between furniture and walls, provides 180 degrees of visibility for all fire strobes, does not block fire alarm pull stations, and provides 36" clearance to all electrical panels.

Signature

Printed Name

Date