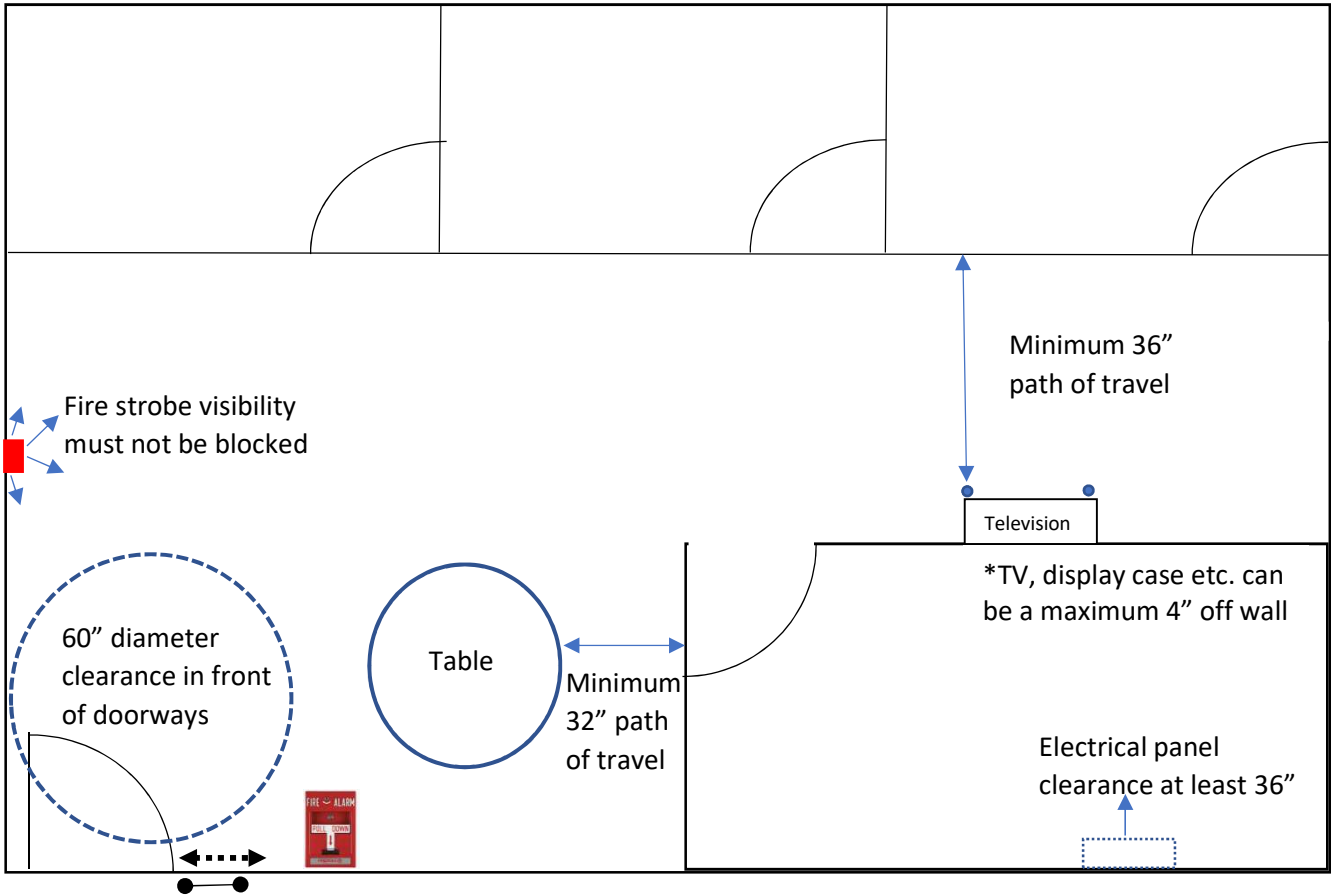







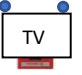



Furniture Purchases: Considerations for ADA & Fire Life Safety Compliance Form

*This form is to be used for standalone furniture only. All partition or cubicle furniture must be reviewed through a separate process. See the Facilities Services website for details on that process.



Legend

- Door and swing direction 
- Doorway wheel chair turn around area, 60" diameter 
- The "pull" side of the door requires 18" clearance 
- The "push" side of the door requires 12" clearance 
- Distance between furniture or walls must be at least 32" 
- Fire strobe visibility must not be blocked 
- Clearance from electrical panels must be at least 36" 
- Televisions, displays etc. in paths of travel and egress must have a depth less than 4" or have poles installed 
- Fire alarm pull stations must not be blocked 

Additional Notes

Furniture cannot be placed in corridors

Any item of furniture that must be attached to the wall (including earthquake bracing) must be further reviewed. Please see the Facilities Services website for additional directions on how to submit for review.

I hereby certify that the furniture I am purchasing does not attach to any walls or floors, provides 60" diameter clearance of all doorways, provides 18" clearance on the "pull" side and 12" clearance on the "push" side of all doorways, provides 32" clearance between furniture and walls, provides 180 degrees of visibility for all fire strobes, does not block fire alarm pull stations, and provides 36" clearance to all electrical panels.

Signature _____

Printed Name _____

Date _____