

Optimizing Internet Explorer Browser Settings

For Oracle Apps, Marking Imaging, Peoplesoft CMS and related Applications

Hardware and Operating Systems Requirements

Intel 2.66 GHz or greater Pentium 4 processor
512 MB or greater RAM
Internet Explorer 7.0
Windows XP SP2

I. Introduction

For desktops running MS Windows XP, Internet Explorer must be configured for use with Oracle Applications, MarkView Imaging, and with Oracle / PeopleSoft Applications. The following are step-by-step procedures to optimize your browser settings.

Note: These settings are for Internet Explorer, but can be used as a guide line for Firefox users as well. On Figure 14 of this document is a screenshot addressing tabbed browsing specific to Firefox users.

Note: Oracle Applications requires installation of Sun's Java Runtime Environment version 1.6.0_xx (current version is _18). To install the Sun Java JRE, you will need administrator rights. Visit <http://java.com> to install the most current version of Java.

II. Configuring Internet Explorer

1. For Windows XP, launch Internet Explorer
2. Select Tools | Internet Options | General | | Browsing History | Settings
3. Under the heading, "Check for newer versions of stored pages:" select <Every time I visit the webpage> (see Figure 1)

Optimizing Internet Explorer Browser Settings For Oracle Apps, Marking Imaging, Peoplesoft CMS and related Applications

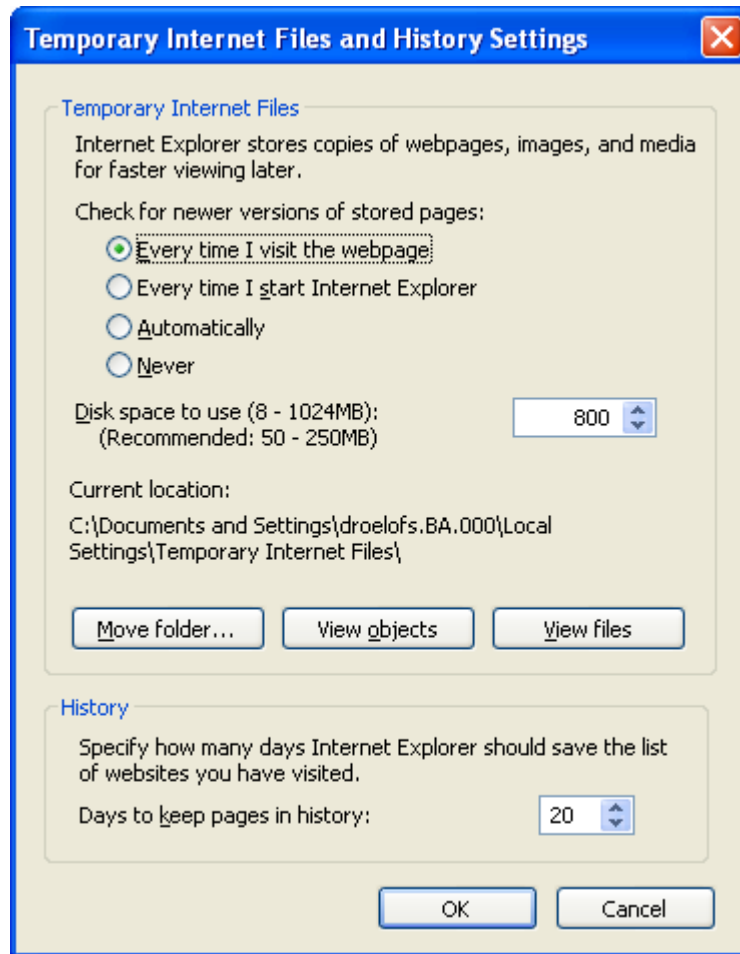


Figure 1

4. Click <OK>
5. Select Tools | Internet Options | Security
6. With the Internet Icon highlighted, select <default level> (see Figure 2)

Optimizing Internet Explorer Browser Settings For Oracle Apps, Marking Imaging, Peoplesoft CMS and related Applications

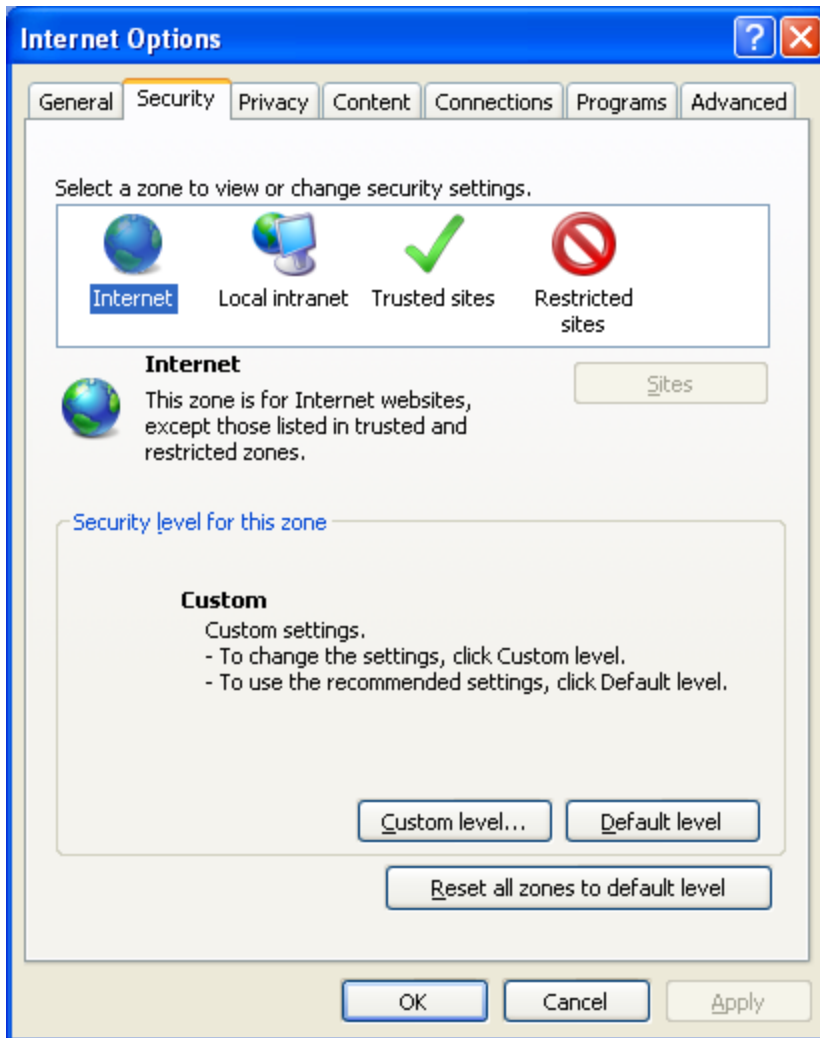


Figure 2

Optimizing Internet Explorer Browser Settings For Oracle Apps, Marking Imaging, Peoplesoft CMS and related Applications

7. With the Local Intranet Icon highlighted, select <default level> (see Figure 3)



Figure 3

Optimizing Internet Explorer Browser Settings For Oracle Apps, Marking Imaging, Peoplesoft CMS and related Applications

8. With "Trusted Sites" highlighted, select <Sites>. (see Figure 4)

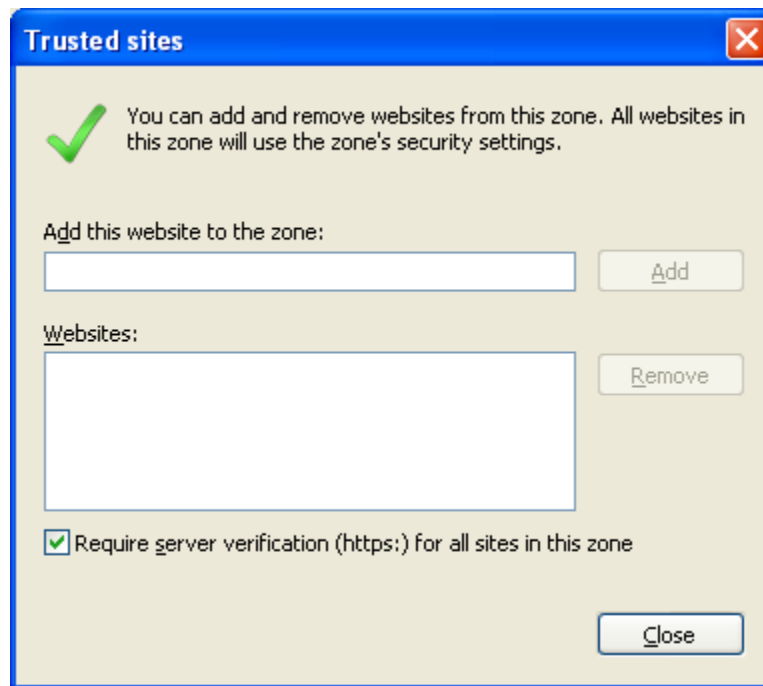


Figure 4

Under the heading "Add this Web Site to the zone", enter these "trusted" URLs:

- <https://aspen.sdsu.edu>
- <https://banff.sdsu.edu>
- <https://bryce.sdsu.edu>
- <https://cmsweb.cms.sdsu.edu>
- <https://fiji.sdsu.edu>
- <https://sedona.sdsu.edu>
- <https://tahiti.sdsu.edu>

Optimizing Internet Explorer Browser Settings For Oracle Apps, Marking Imaging, Peoplesoft CMS and related Applications

- a. Then press <Add> | <Close> (see Figures 5 and 6)

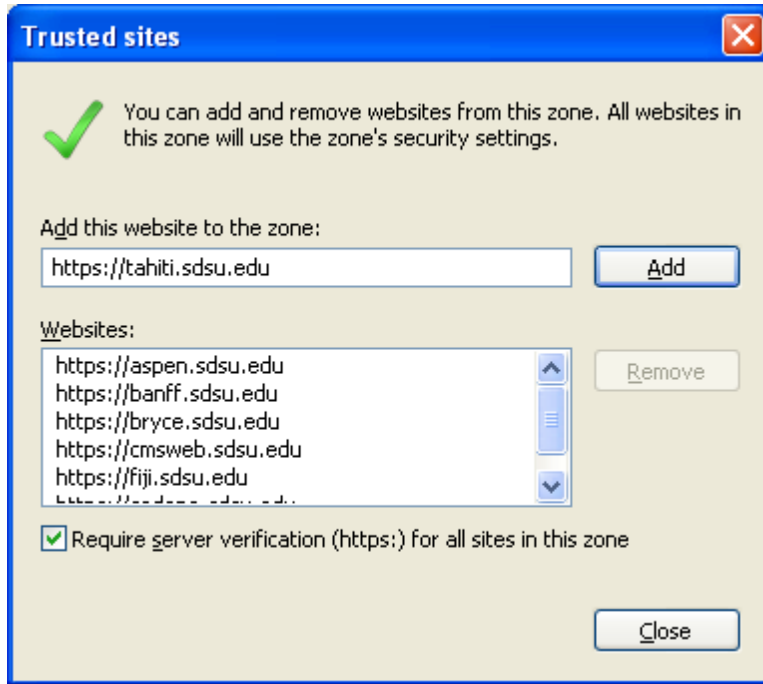


Figure 5

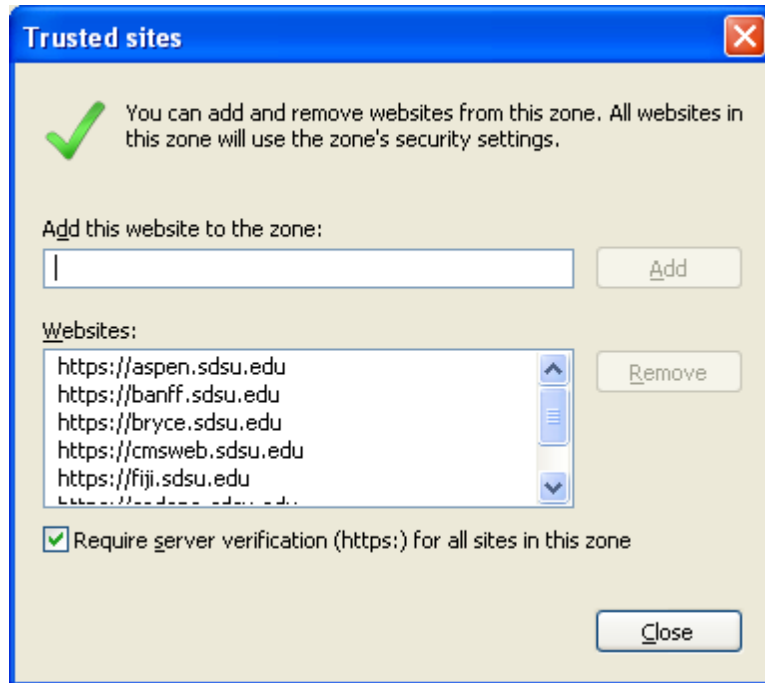


Figure 6

Optimizing Internet Explorer Browser Settings For Oracle Apps, Marking Imaging, Peoplesoft CMS and related Applications

9. With <Trusted Sites> still highlighted, select <Custom Level> and update the following "Security Settings". These settings will apply to all "trusted sites" **only**:
 - a. "Download signed ActiveX controls" set to <enable> (see Figure 7)
 - b. "Download unsigned ActiveX controls" set to <enable> (see Figure 7)
 - c. "Initialize and Script ActiveX controls not marked as safe for scripting" set to <enable> (see Figure 7)

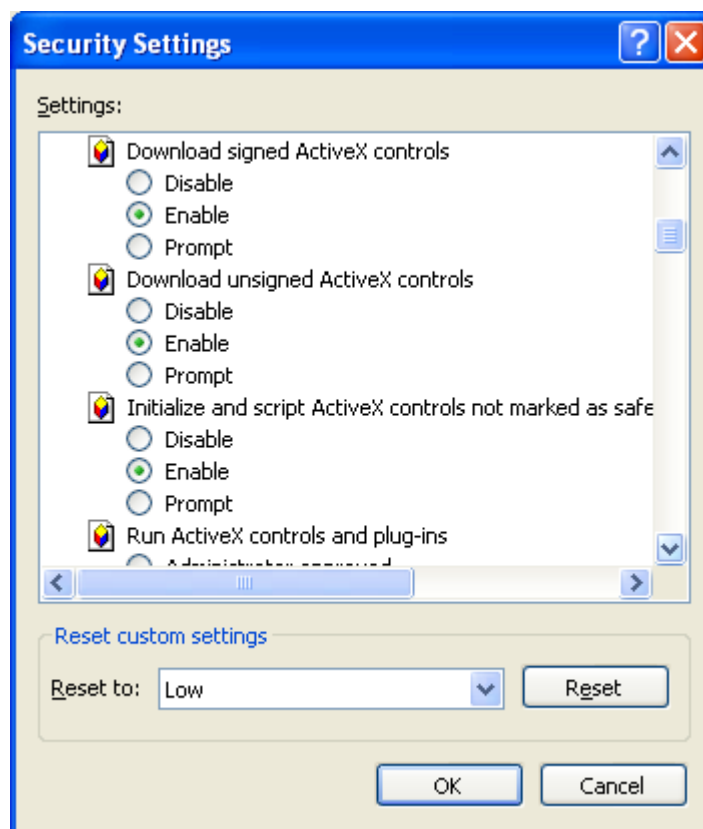


Figure 7

Optimizing Internet Explorer Browser Settings For Oracle Apps, Marking Imaging, Peoplesoft CMS and related Applications

10. In order to do a File>Export from within Oracle Apps, downloads should be set as shown (see Figure 8)
 - a. "Automatic prompting for file downloads", set to <enable> (see Figure 8)
 - b. "File Download", set to <enable> (see Figure 8)
 - c. "Font Download", set to <enable> (see Figure 8)

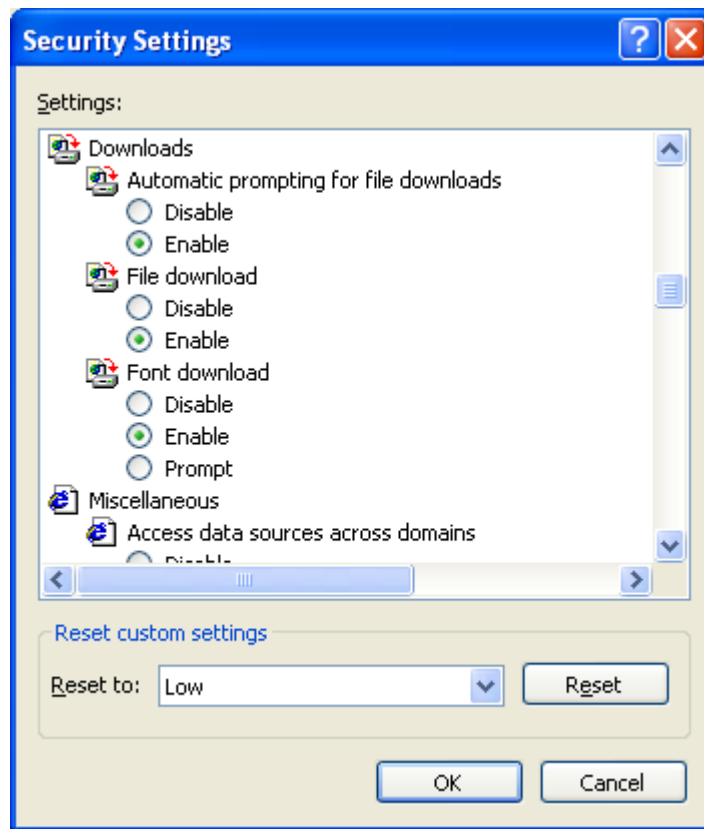


Figure 8

Optimizing Internet Explorer Browser Settings For Oracle Apps, Marking Imaging, Peoplesoft CMS and related Applications

11. "Use Pop-up Blocker" set to <disable> (see Figure 9) and then select <OK>

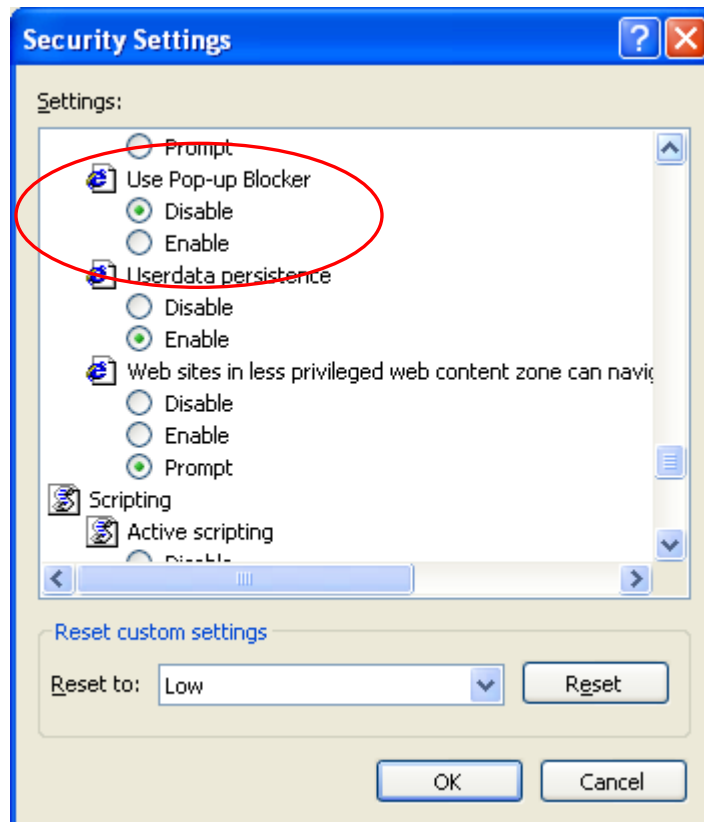


Figure 9

Optimizing Internet Explorer Browser Settings For Oracle Apps, Marking Imaging, Peoplesoft CMS and related Applications

12. With the “Privacy” tab highlighted, check <Turn on Pop-up Blocker> (see Figure 10)

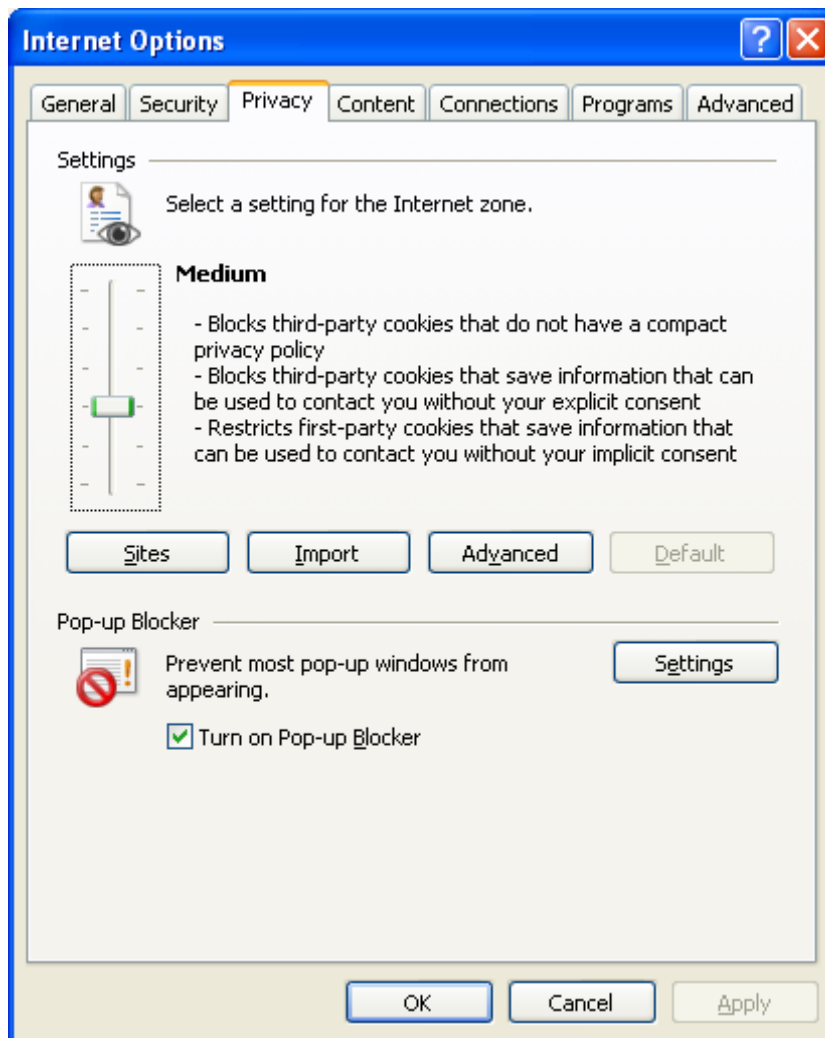


Figure 10

Please Note: Internet Explorer Plug-ins such as Yahoo- and Google-Search, will install Pop-up blockers of their own — components of these customized, search toolbars. BFA Policy discourages the use of any IE Plug-In or downloadable application. However, if you feel the need to use them anyway, be sure to disable any Pop-up blocking features. Otherwise, Oracle Apps and MarkView imaging will not function properly.

Optimizing Internet Explorer Browser Settings For Oracle Apps, Marking Imaging, Peoplesoft CMS and related Applications

13. With the "Advanced" tab highlighted, update the following settings:
 - a. Under "Browsing", uncheck <Reuse windows for launching shortcuts (When tabbed browsing is off)> (see Figure 11)

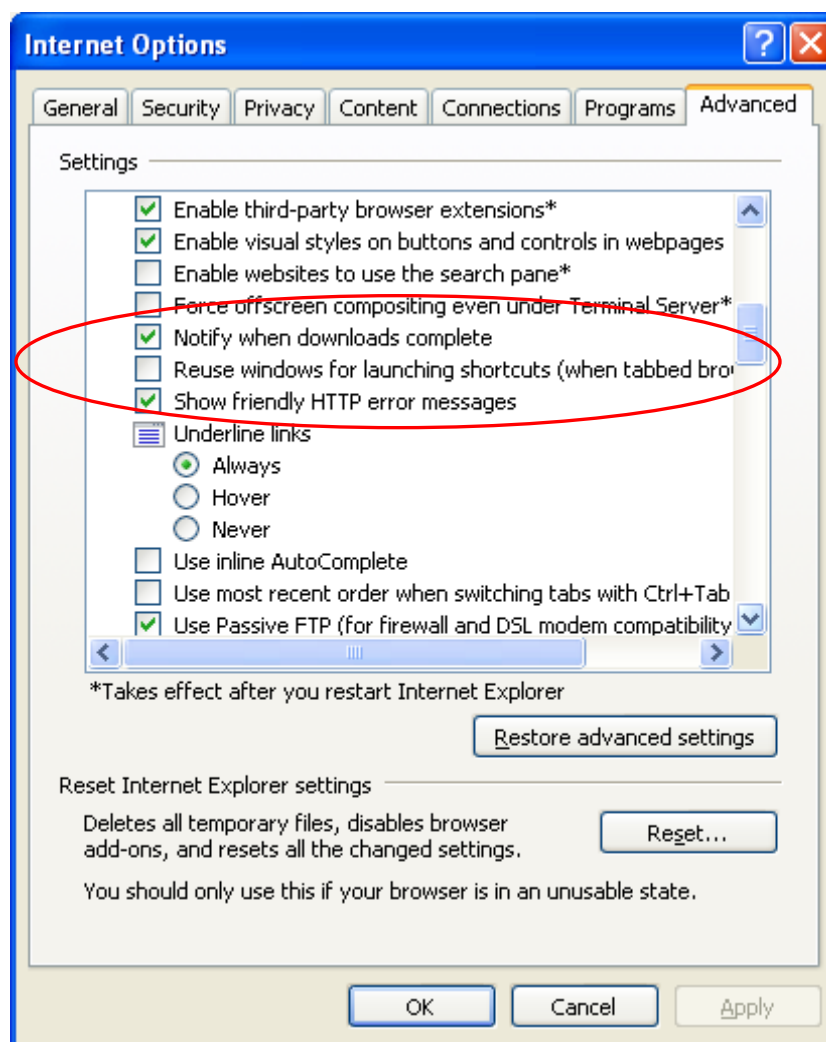


Figure 11

Optimizing Internet Explorer Browser Settings For Oracle Apps, Marking Imaging, Peoplesoft CMS and related Applications

- b. Under "Security"
1. Uncheck <Do not save encrypted pages to disk> (see Figure 12)
 2. Check <Empty Temporary Internet Files folder when browser is closed> (see Figure 12)

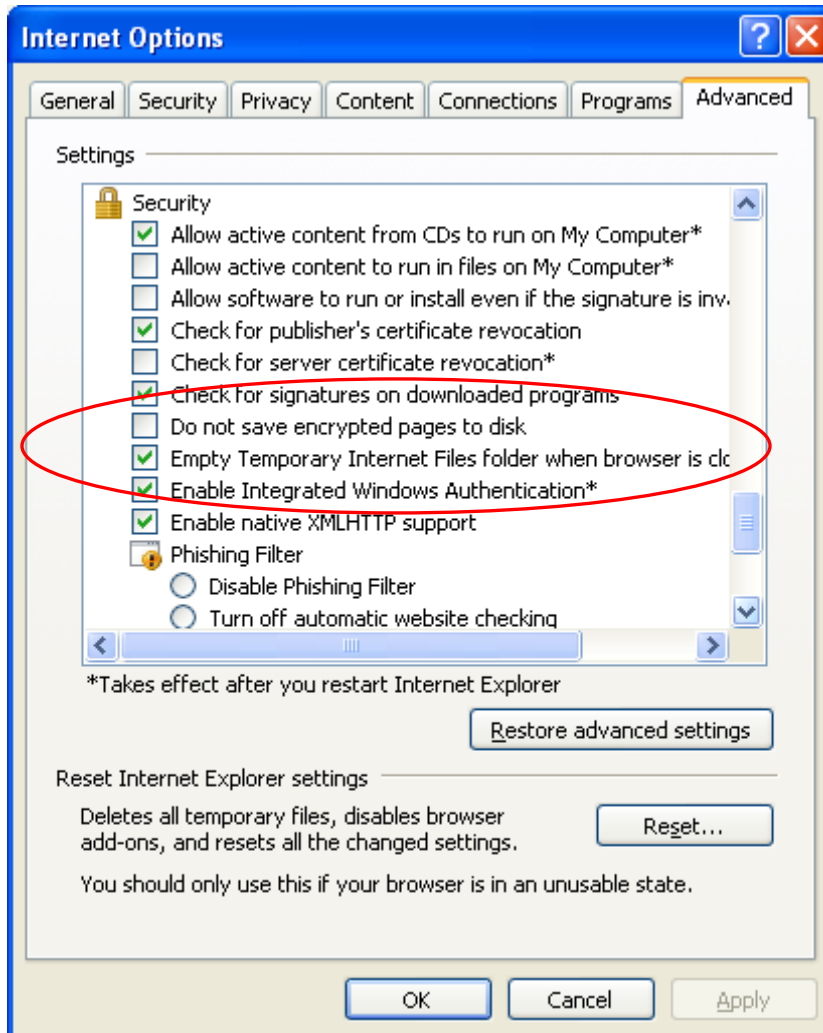


Figure 12

Optimizing Internet Explorer Browser Settings For Oracle Apps, Marking Imaging, Peoplesoft CMS and related Applications

14 Using Tabbed Browsing with Oracle Application

Internet Options > General > Tabs > Settings

When a pop-up is encountered: Check "Always open pop-ups in a new window" (see Figure 13)

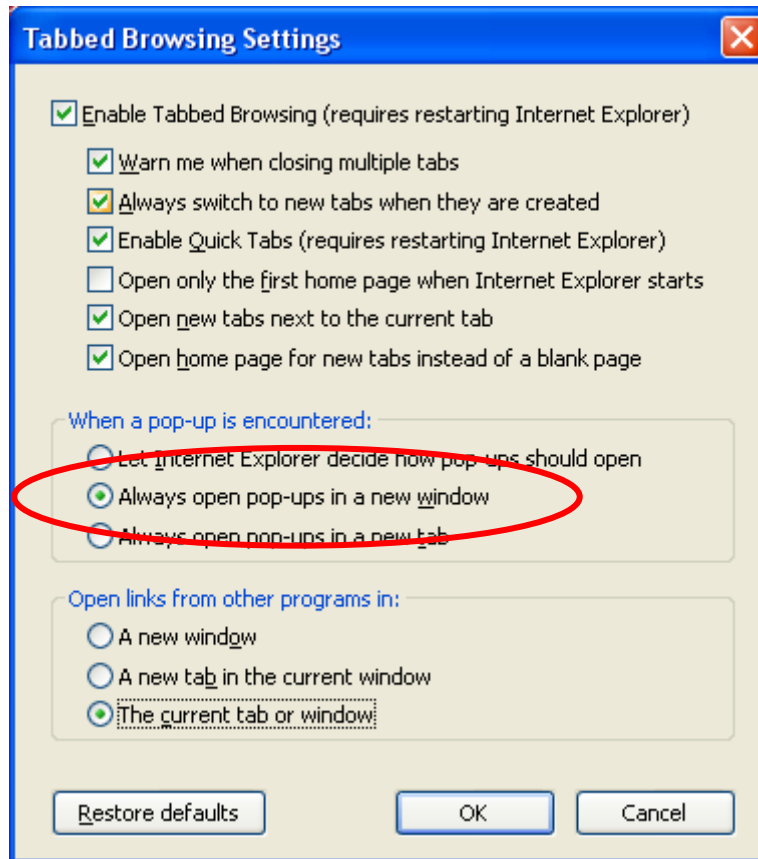


Figure 13

15 Select <OK>

Optimizing Internet Explorer Browser Settings For Oracle Apps, Marking Imaging, Peoplesoft CMS and related Applications

Note: If using Firefox 2.x for Oracle Applications, the Tabs page should be set as follows:
Internet Options (menu) > Tools > Options > Tabs (tab)
New pages should be opened in: a new tab (see Figure 14)

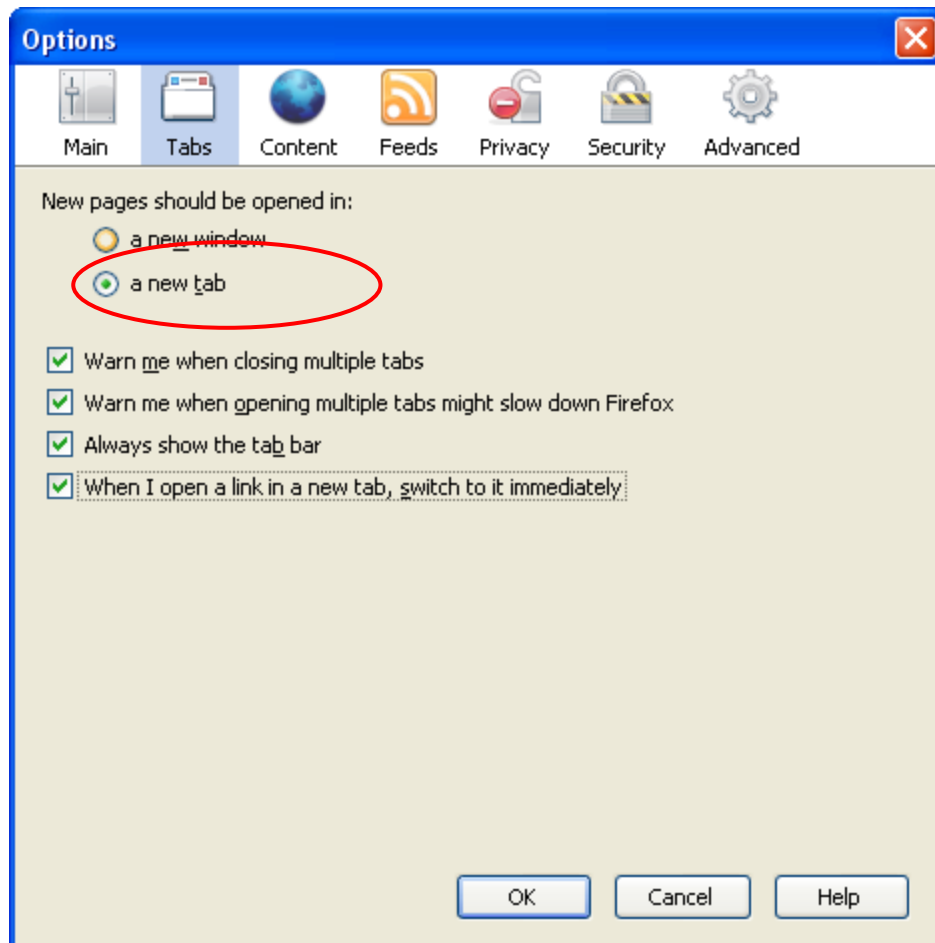


Figure 14

16 Select <OK>

Optimizing Internet Explorer Browser Settings For Oracle Apps, Marking Imaging, Peoplesoft CMS and related Applications

III. Define a new File Type (.tsv) for exporting to Excel

1. Navigate to My Computer>Tools>Folder Options>File Types (see Figure 15)

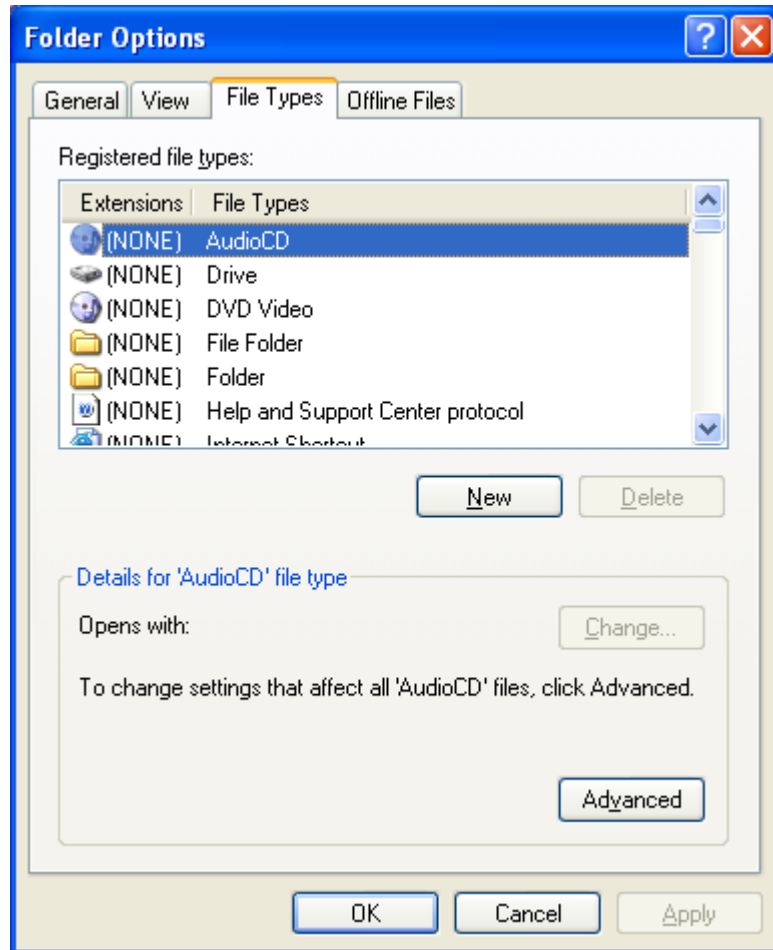


Figure 15

2. Select New>Create New > For File Extension, enter TSV (see Figure 16)

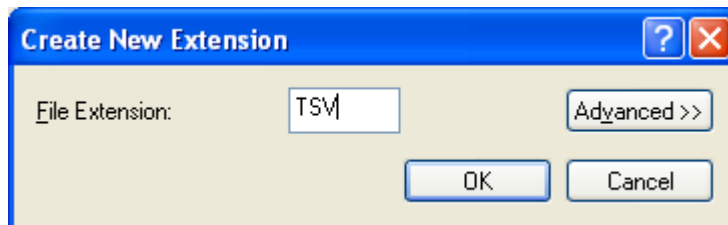


Figure 16

Optimizing Internet Explorer Browser Settings For Oracle Apps, Marking Imaging, Peoplesoft CMS and related Applications

3. Click on "Advanced" and for "Associated File Type, find "Microsoft Excel Worksheet" (see Figure 17)

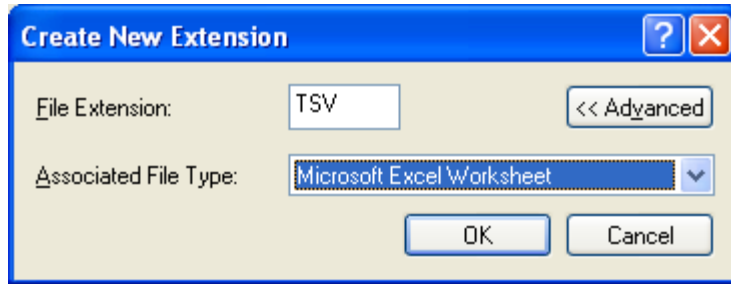


Figure 17

4. Click OK. You should then see the following screen (see Figure 18)

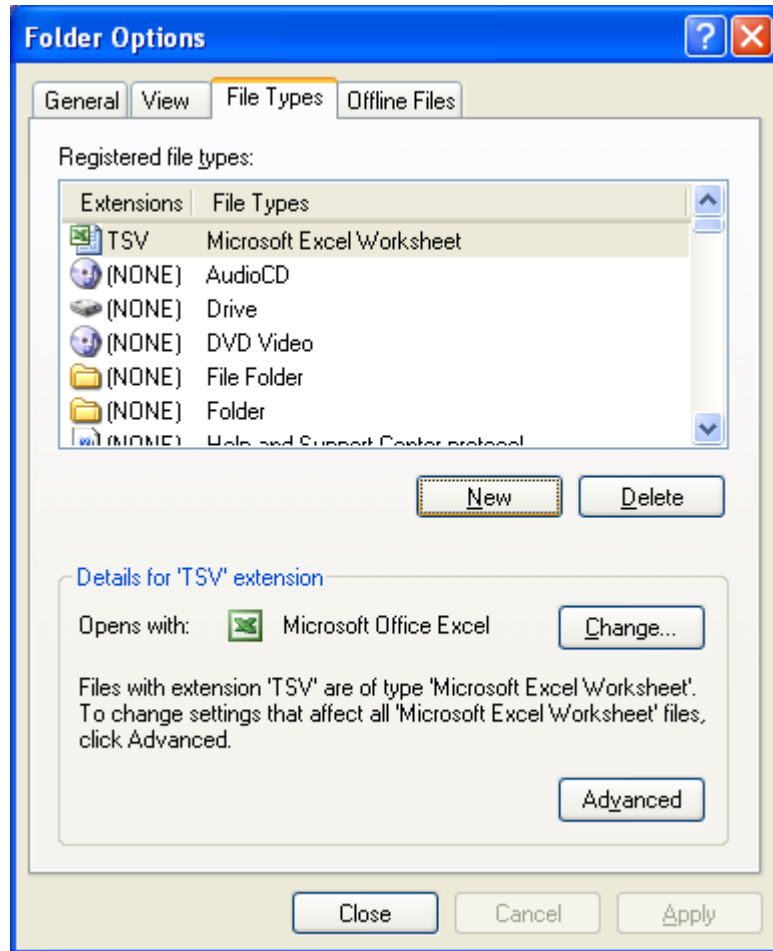


Figure 18

Optimizing Internet Explorer Browser Settings For Oracle Apps, Marking Imaging, Peoplesoft CMS and related Applications

5. Click on the Advanced button (see Figure 19)

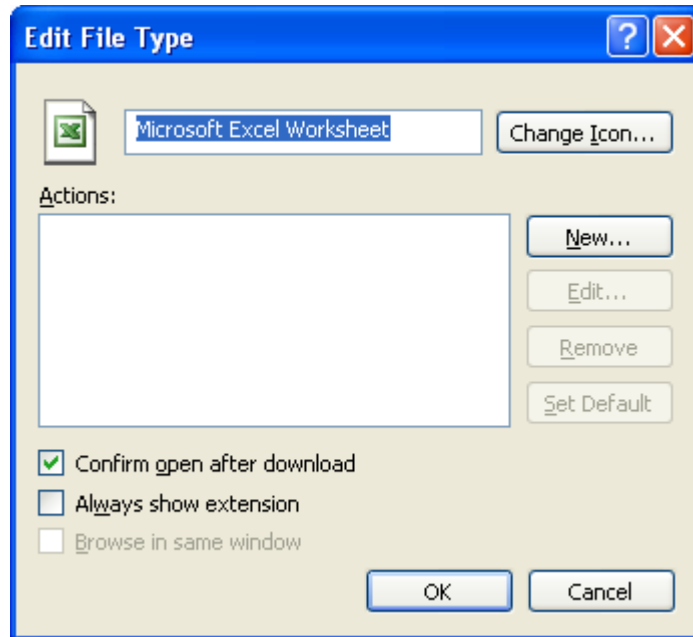


Figure 19

Make sure the "Confirm open after download" is checked and then click "OK"

Optimizing Internet Explorer Browser Settings

For Oracle Apps, Marking Imaging, Peoplesoft CMS and related Applications

IV. Set Excel Office 2007 settings for exporting to Excel

1. Open MS Excel Office 2007 and click on the Microsoft Office button (see Figure 20)

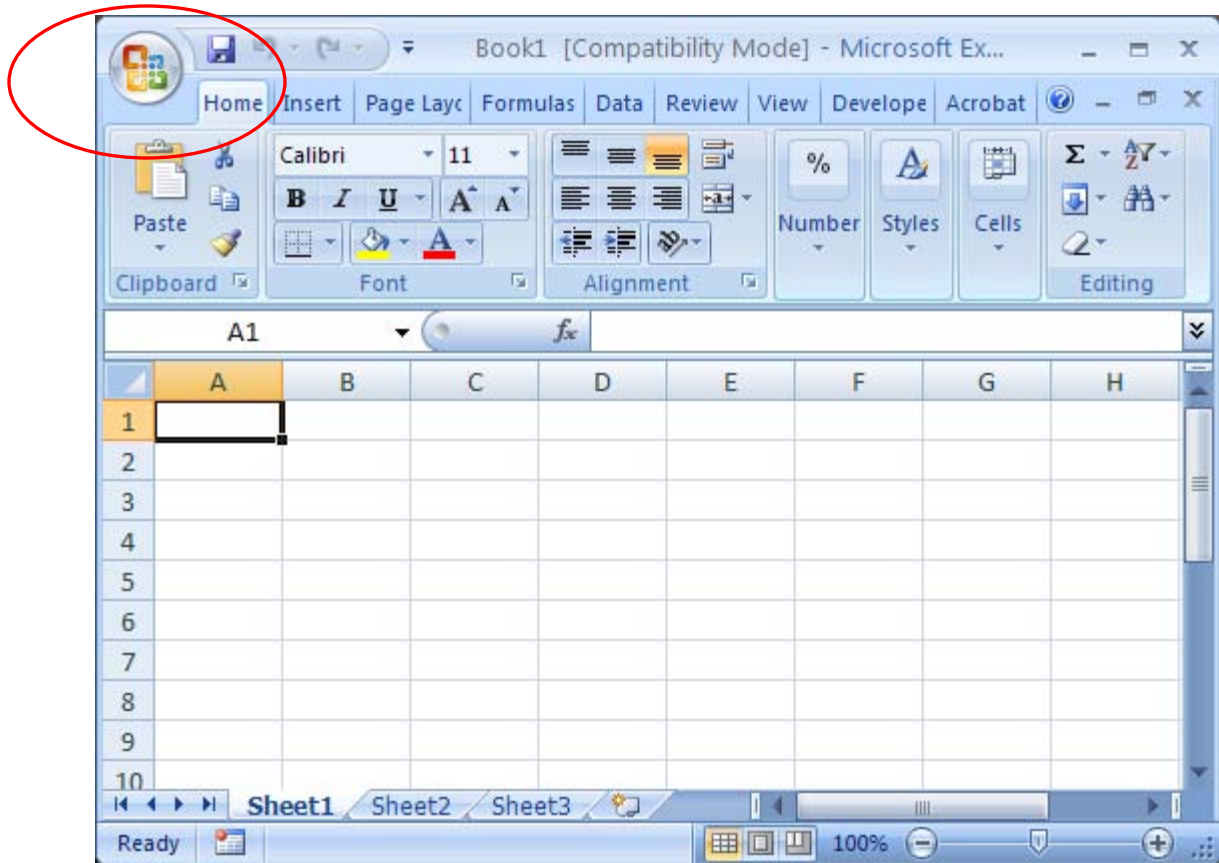


Figure 20

Optimizing Internet Explorer Browser Settings For Oracle Apps, Marking Imaging, Peoplesoft CMS and related Applications

2. Click on “Excel Options” in the bottom of the drop-down menu and click on the “Trust Center” option (see Figure 21)

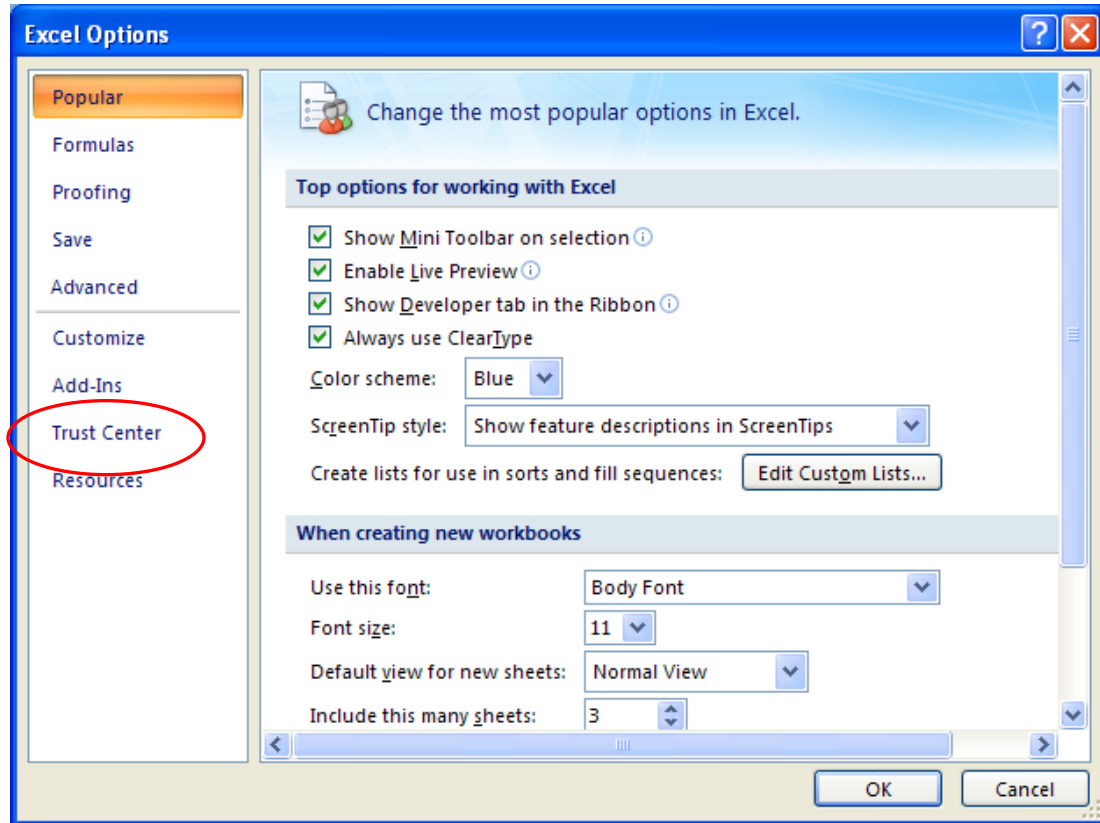


Figure 21

Optimizing Internet Explorer Browser Settings For Oracle Apps, Marking Imaging, Peoplesoft CMS and related Applications

3. Click on "Trust Center Settings" (see Figure 22)

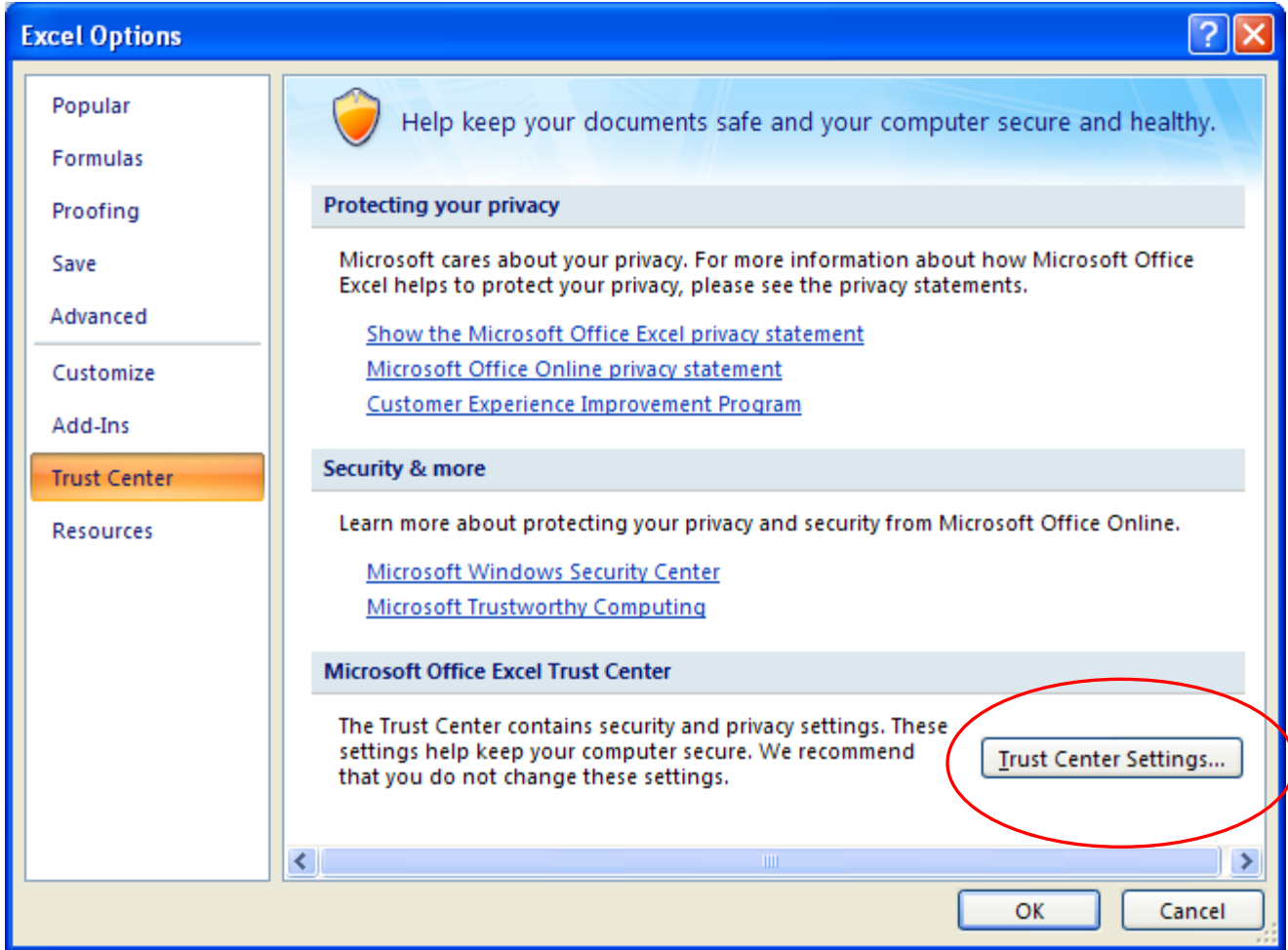


Figure 22

Optimizing Internet Explorer Browser Settings For Oracle Apps, Marking Imaging, Peoplesoft CMS and related Applications

4. Click on “Macro Settings” (see Figure 23). Check “Disable all macros with notification” and “Trust access to the VBA project object model”

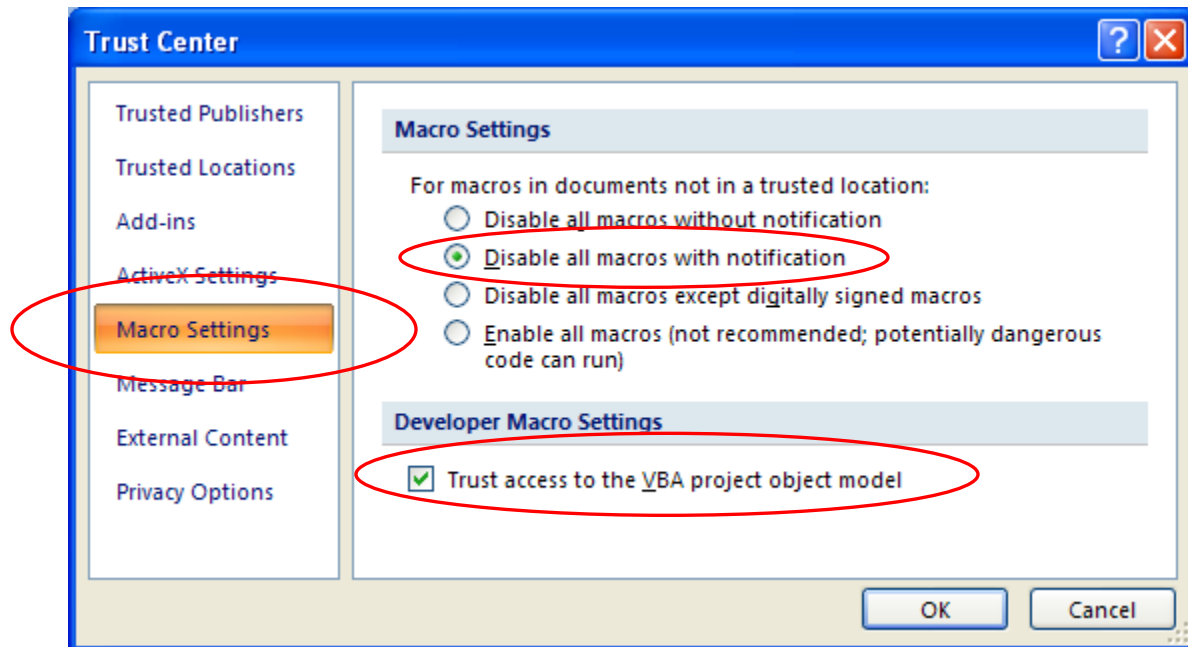


Figure 23

5. Click OK to save

Optimizing Internet Explorer Browser Settings

For Oracle Apps, Marking Imaging, Peoplesoft CMS and related Applications

Document Control

Date	Author	Version	Change Reference
December 6, 2006	Donna Roelofsz	1.00	Created
June 1, 2008	Dennis Espineli	1.01	Updated changes
March 12, 2009	Dennis Espineli	2.00	Updated changes/Version Control
August 26, 2009	Donna Roelofsz	3.00	Updated changes/Version Control
September 28, 2009	Donna Roelofsz	4.00	Updated changes/Version Control
February 16, 2010	Donna Roelofsz	5.00	Updated changes/Version Control