

Recommended Desktop Settings for Oracle eBS Applications and MarkView Imaging

INTRODUCTION

Oracle eBS applications and MarkView imaging are certified to run on desktops with the XP or Windows 7 operating system and using browsers Internet Explorer or Firefox. The following are step-by-step procedures to optimize your desktop settings.

Section I: Java settings

Section II: Browser settings

Section III: Microsoft Excel settings

SECTION I: CONFIGURING the JAVA RUNTIME ENVIRONMENT

1. Oracle Applications requires installation of the Java Runtime Environment (JRE) version 1.6.0_xx (current version is _24_b07 and can be obtained from the Project LEAP website).

To install the Sun Java JRE, you will need administrator rights on the desktop. Visit the Project LEAP website, [Java Update Info](#) to install the most current version of Java.

Once installed, open the PC Control Panel, Programs - and double-click on the JAVA icon. (see Figure I.1)

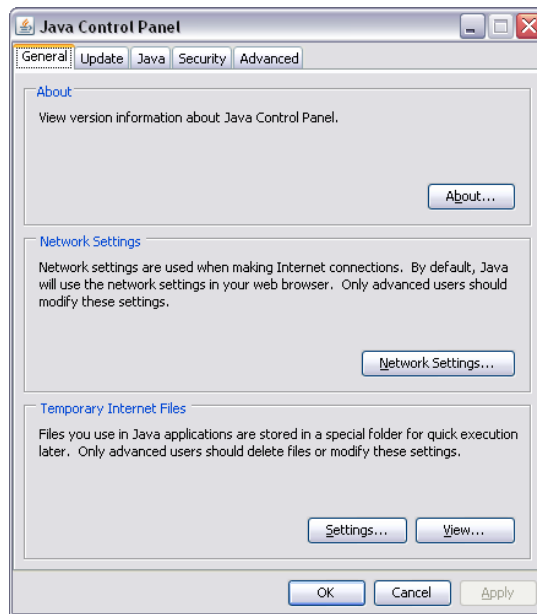


Figure I.1

2. Click on the Advanced Tab > Security > Mixed Code (sandboxed vs. trusted) security verification

Select the 2nd radio button "Enable – hide warning and run with protections". Click <OK>. (see Figure I.2)

Recommended Desktop Settings for Oracle eBS Applications and MarkView Imaging

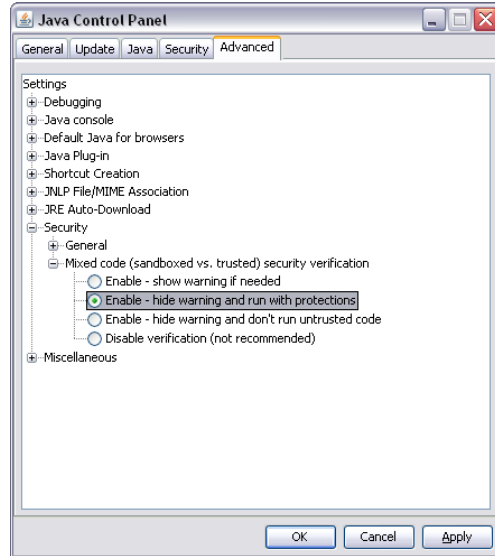


Figure I.2

SECTION II: CONFIGURING INTERNET EXPLORER 7 OR 8

Note: These settings are for Internet Explorer, but can be used as a guideline for Firefox users as well. On Figures II.3 and II.4 of this document are screenshots addressing tabbed browsing specific to Firefox users.

1. For Windows XP and Windows 7, launch Internet Explorer
2. Select Tools | Internet Options | General | Browsing History | Settings
3. Under the heading, "Check for newer versions of stored pages:" select <Every time I visit the webpage> and click <OK> (see Figure II.1)

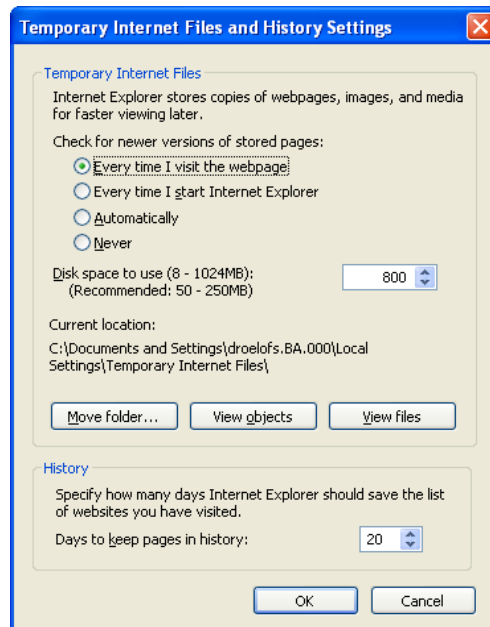


Figure II.1

Recommended Desktop Settings for Oracle eBS Applications and MarkView Imaging

4. Using Tabbed Browsing with Oracle Applications

Internet Options | General | Tabs | Settings

When a pop-up is encountered: Check <Always open pop-ups in a new window> and click <OK> (see Figure II.2)

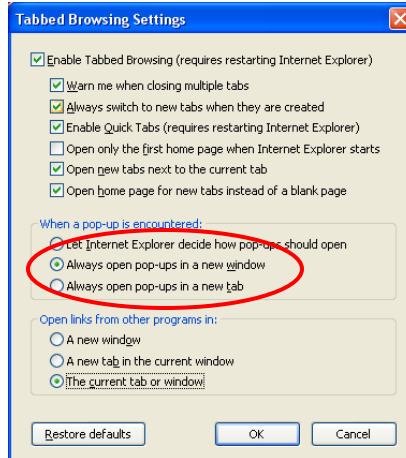


Figure II.2

5. If using Firefox 2.x for Oracle Applications, the Tabs page should be set as follows:

Tools | Options | Tabs

New pages should be opened in: Select <a new tab> (see Figure II.3)

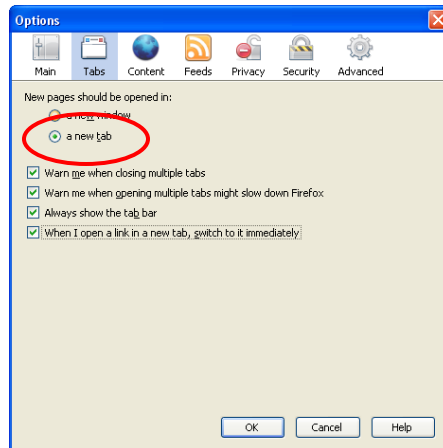


Figure II.3

6. If using Firefox 3.x for Oracle Applications, the Tabs page should be set as follows:

Tools | Options | Tabs

Check <Open new windows in a new tab instead> (see Figure II.4)

Recommended Desktop Settings for Oracle eBS Applications and MarkView Imaging

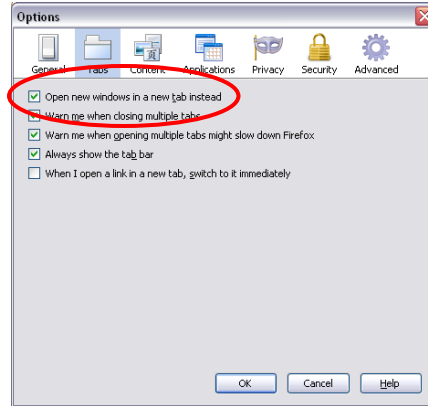


Figure II.4

7. Select Tools | Internet Options | Security
8. With the Internet Icon highlighted, select <default level> (see Figure II.5)

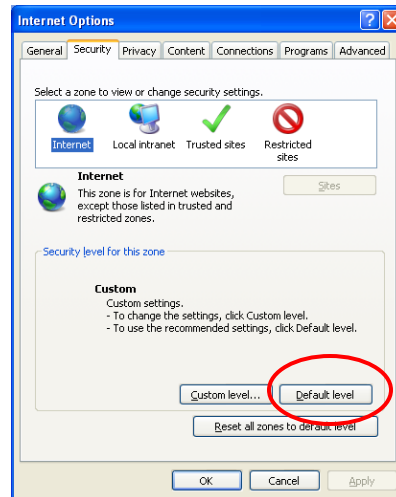


Figure II.5

9. With the Local Intranet Icon highlighted, select <default level> (see Figure II.6)

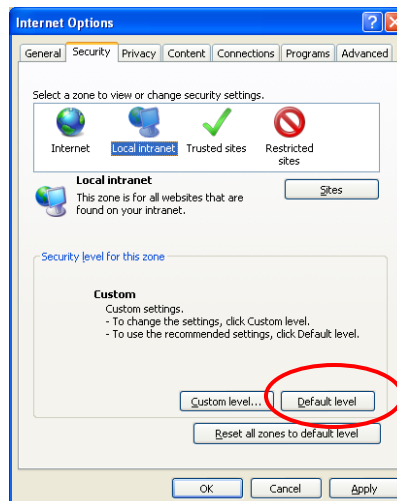


Figure II.6

Recommended Desktop Settings for Oracle eBS Applications and MarkView Imaging

10. With "Trusted Sites" highlighted, select <Sites>. (see Figure II.7)

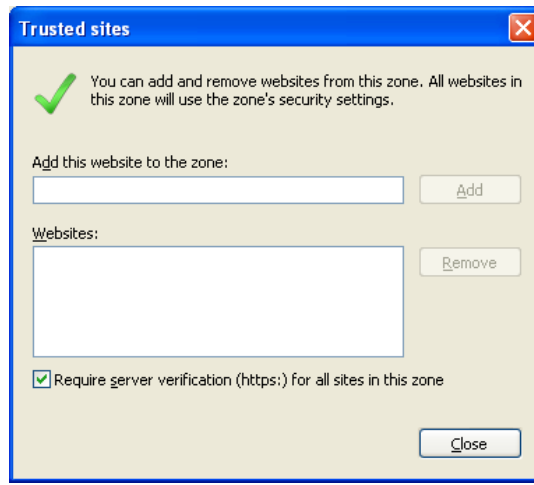


Figure II.7

Under the heading "Add this Web Site to the zone", enter these "trusted" URLs:

<https://banff.sdsu.edu>
<https://cmsweb.cms.sdsu.edu>
<https://fiji.sdsu.edu>
<https://sedona.sdsu.edu>
<https://tahiti.sdsu.edu>

Then press <Add> | <Close> (see Figures II.8 and II.9)

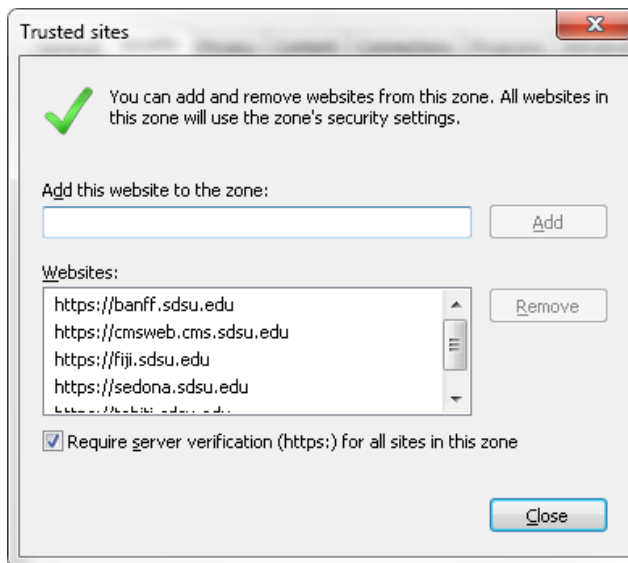


Figure II.8

Recommended Desktop Settings for Oracle eBS Applications and MarkView Imaging

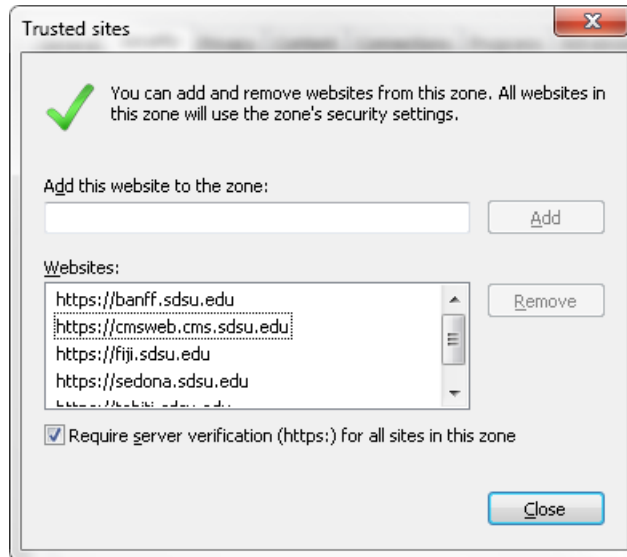


Figure II.9

11. With <Trusted Sites> still highlighted, select <Custom Level> and update the following “Security Settings”. These settings will apply to all “trusted sites” **only**:
 - a. “Download signed ActiveX controls” set to <enable> (see Figure II.10)
 - b. “Download unsigned ActiveX controls” set to <enable> (see Figure II.10)
 - c. “Initialize and Script ActiveX controls not marked as safe for scripting” set to <enable> (see Figure II.10)

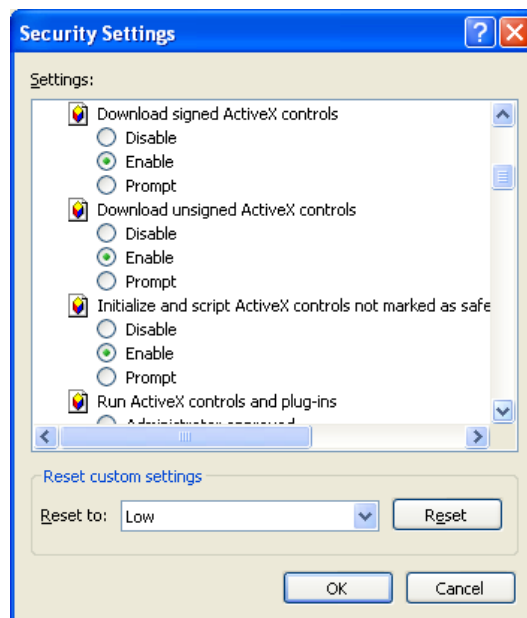


Figure II.10

12. In order to do a File>Export from within Oracle Apps, downloads should be set as shown (see Figure II.11)
 - a. “Automatic prompting for file downloads”, set to <enable> (see Figure II.11)
 - b. “File Download”, set to <enable> (see Figure II.11)
 - c. “Font Download”, set to <enable> (see Figure II.11)

Recommended Desktop Settings for Oracle eBS Applications and MarkView Imaging

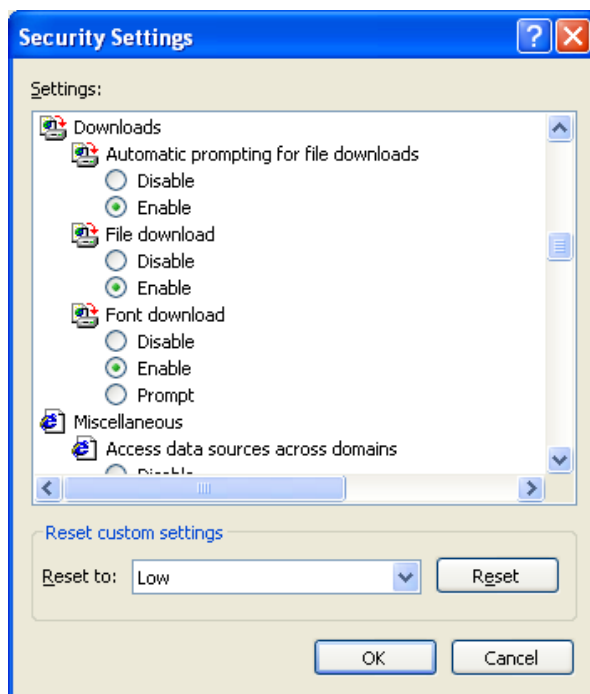


Figure II.11

13. "Use Pop-up Blocker" set to <disable> and select <OK> (see Figure II.12)

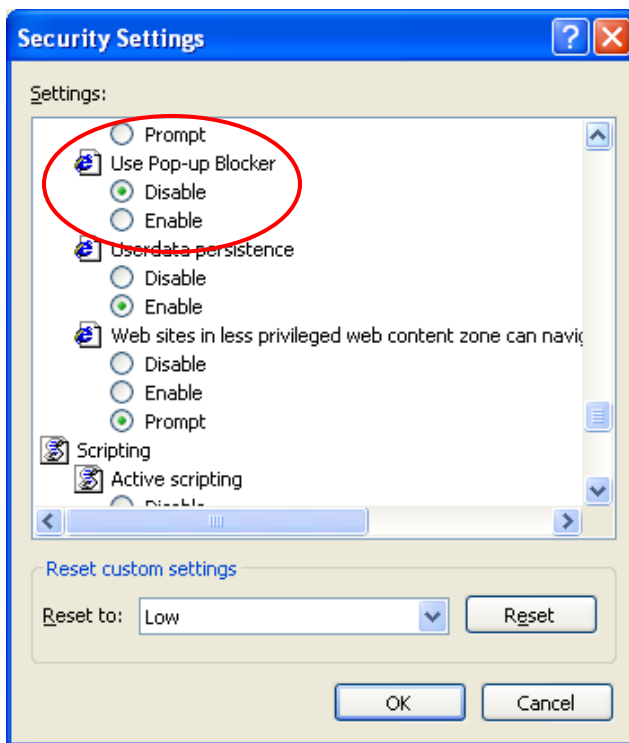


Figure II.12

Recommended Desktop Settings for Oracle eBS Applications and MarkView Imaging

14. With the "Privacy" tab highlighted, check <Turn on Pop-up Blocker> (see Figure II.13)

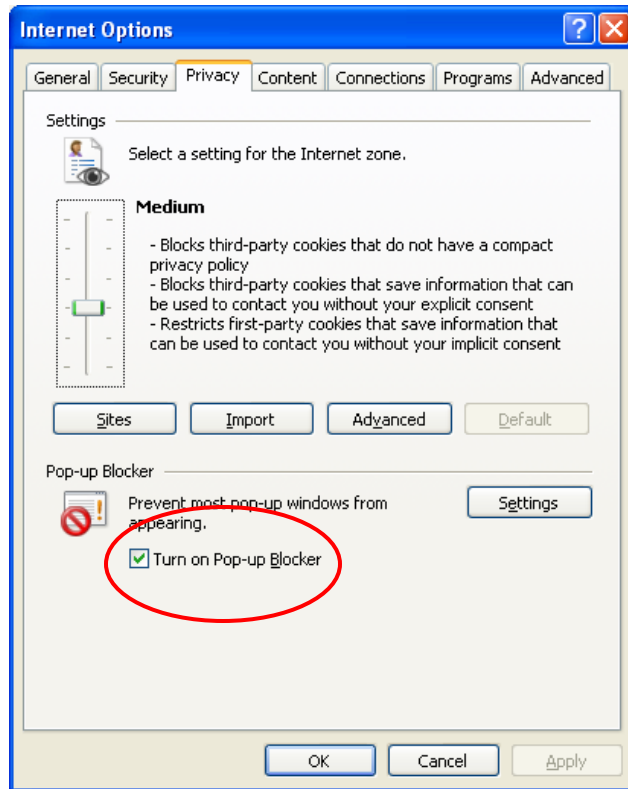


Figure II.13

Please Note: Internet Explorer Plug-ins such as Yahoo- and Google-Search, will install Pop-up blockers of their own — components of these customized, search toolbars. BFA Policy discourages the use of any IE Plug-In or downloadable application. However, if you feel the need to use them anyway, be sure to disable any Pop-up blocking features. Otherwise, Oracle Apps and MarkView imaging will not function properly.

Recommended Desktop Settings for Oracle eBS Applications and MarkView Imaging

15. With the "Advanced" tab highlighted, update the following settings:
 - a. Under "Browsing", uncheck <Reuse windows for launching shortcuts (when tabbed browsing is off)> (see Figure II.14)

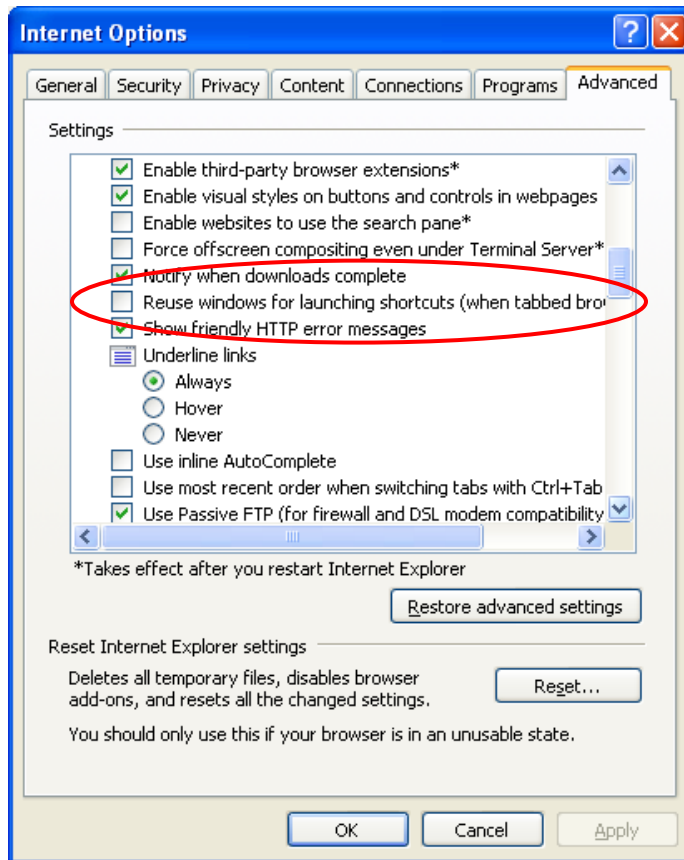


Figure II.14

Recommended Desktop Settings for Oracle eBS Applications and MarkView Imaging

- b. Under "Security"
1. Uncheck <Do not save encrypted pages to disk> (see Figure II.15)
 2. Check <Empty Temporary Internet Files folder when browser is closed> (see Figure II.15)

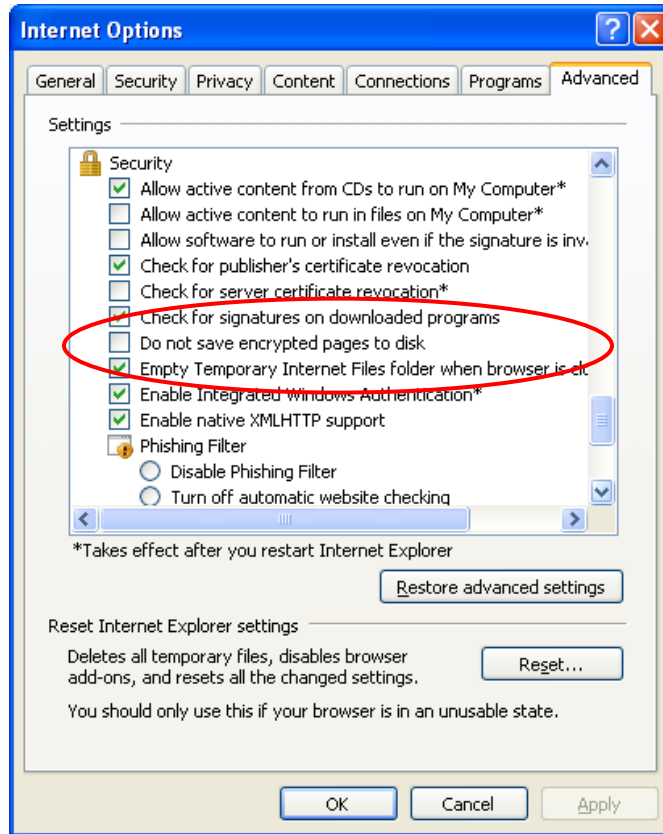


Figure II.15

Recommended Desktop Settings for Oracle eBS Applications and MarkView Imaging

SECTION III: MICROSOFT EXCEL SETTINGS

Set Excel Office settings and File Types for performing Action/Exports from Oracle to Excel

1. Open MS Excel Office 2007 and click on the Microsoft Office button. For Excel Office 2010, select <File | Options> (see Figure III.1)

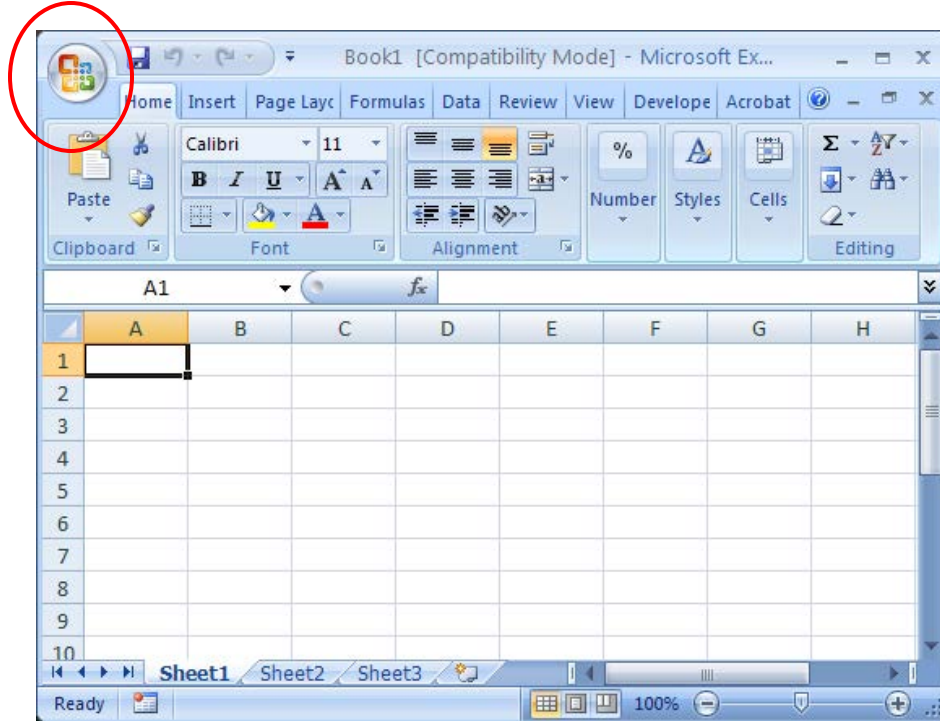


Figure III.1

2. Click on "Excel Options" in the bottom of the drop-down menu and click on <Trust Center> (see Figure III.2)

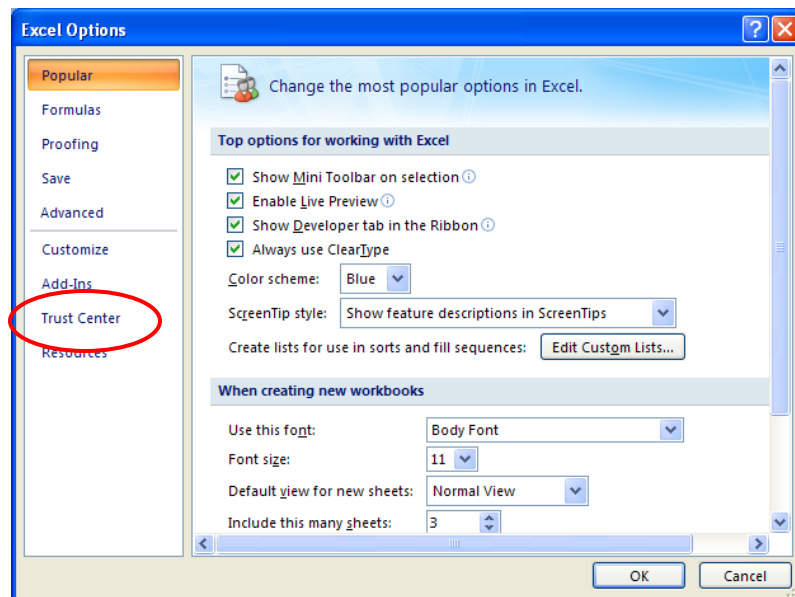


Figure III.2

Recommended Desktop Settings for Oracle eBS Applications and MarkView Imaging

3. Click on <Trust Center Settings> (see Figure III.3)

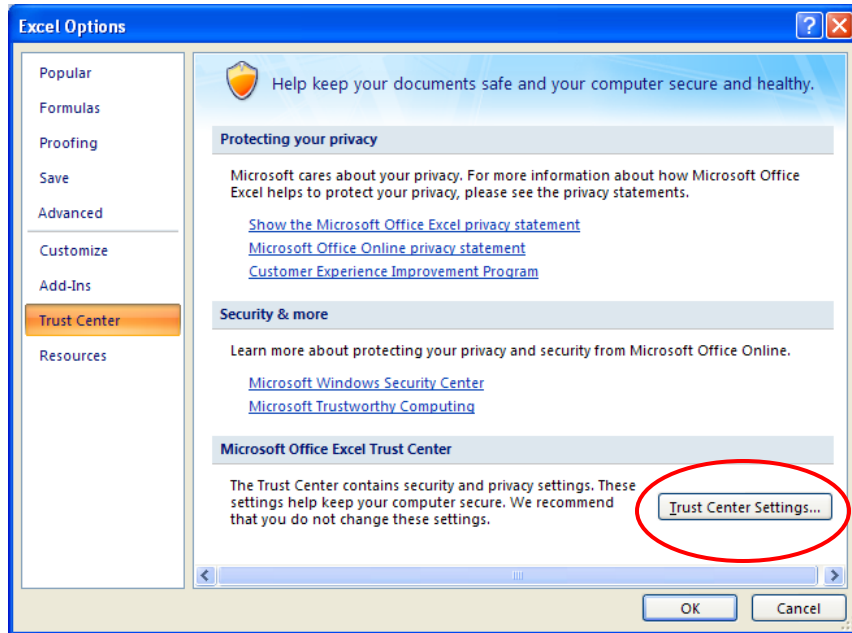


Figure III.3

4. Click on <Macro Settings> Check <Disable All Macros with notification> and <Trust access to the VBA project object model> Click <OK> to save (see Figure III.4)

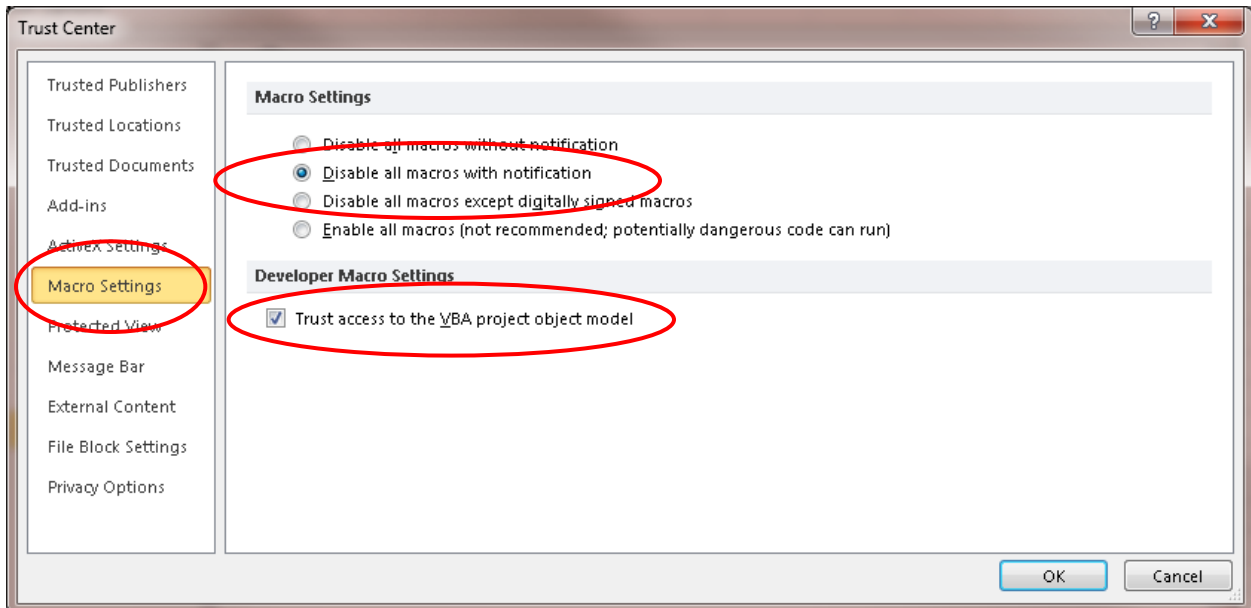


Figure III.4

Recommended Desktop Settings for Oracle eBS Applications and MarkView Imaging

5. Define a new File Type (.tsv) for performing Action/Exports out of Oracle Apps to Excel

For Windows XP Users

Navigate to My Computer | Tools | Folder Options | File Types Select <New> (see Figure III.5)

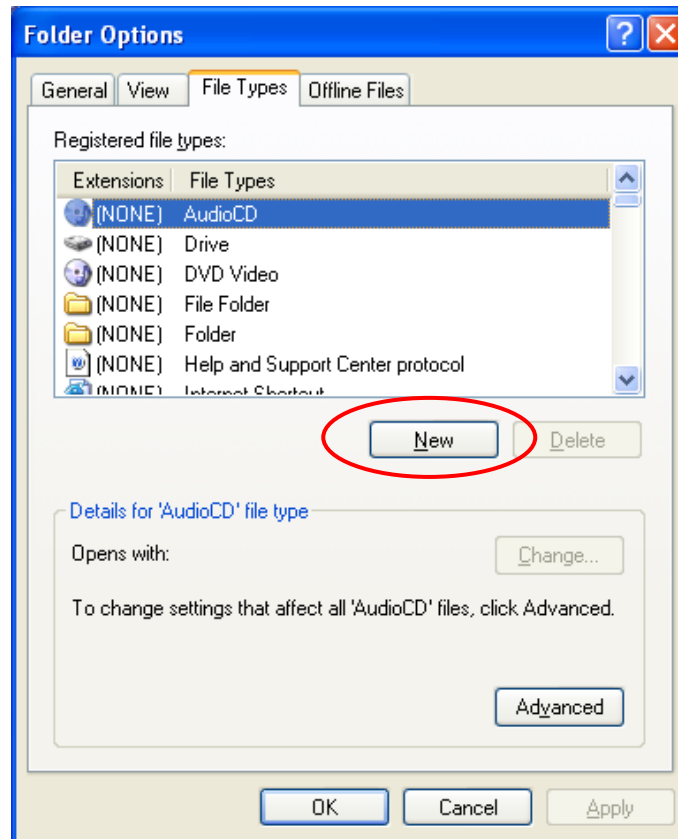


Figure III.5

6. Create New Extension | For File Extension, enter TSV (see Figure III.6)

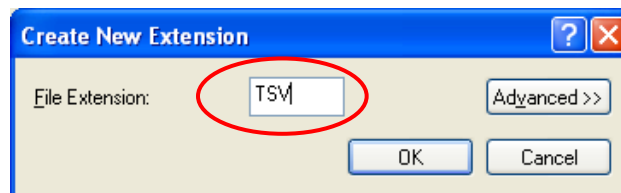


Figure III.6

7. Click on <Advanced> and for <Associated File Type>, select <Microsoft Excel Worksheet> (see Figure III.7)

Recommended Desktop Settings for Oracle eBS Applications and MarkView Imaging

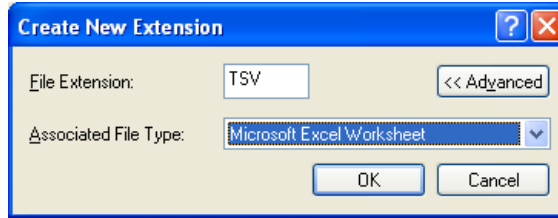


Figure III.7

8. Click <OK>. Click <Advanced> (see Figure III.8)

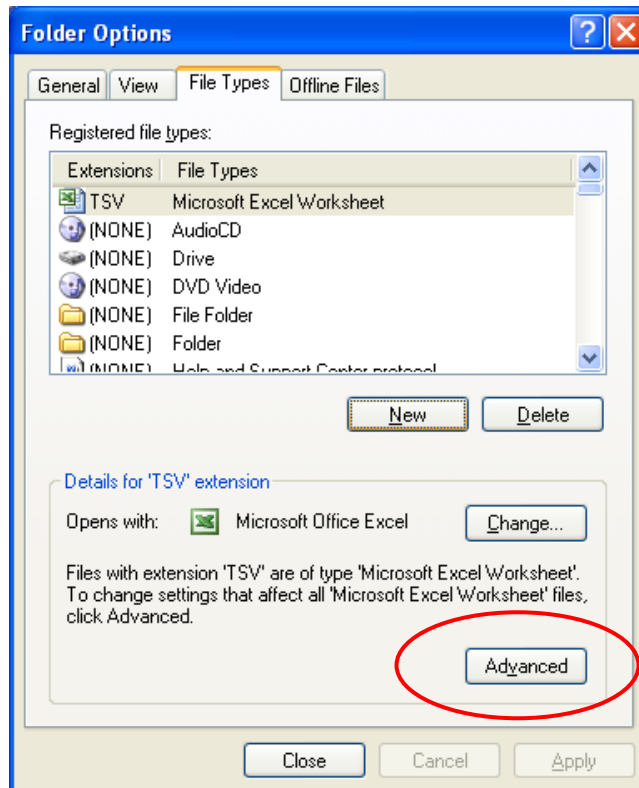


Figure III.8

9. Check <Confirm open after download> (see Figure III.9)

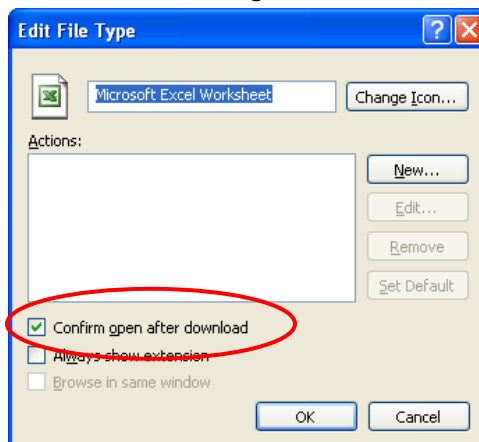


Figure III.9

Recommended Desktop Settings for Oracle eBS Applications and MarkView Imaging

For Windows 2007

10. Perform a query in Oracle and select <File | Export> (see Figure III.10)

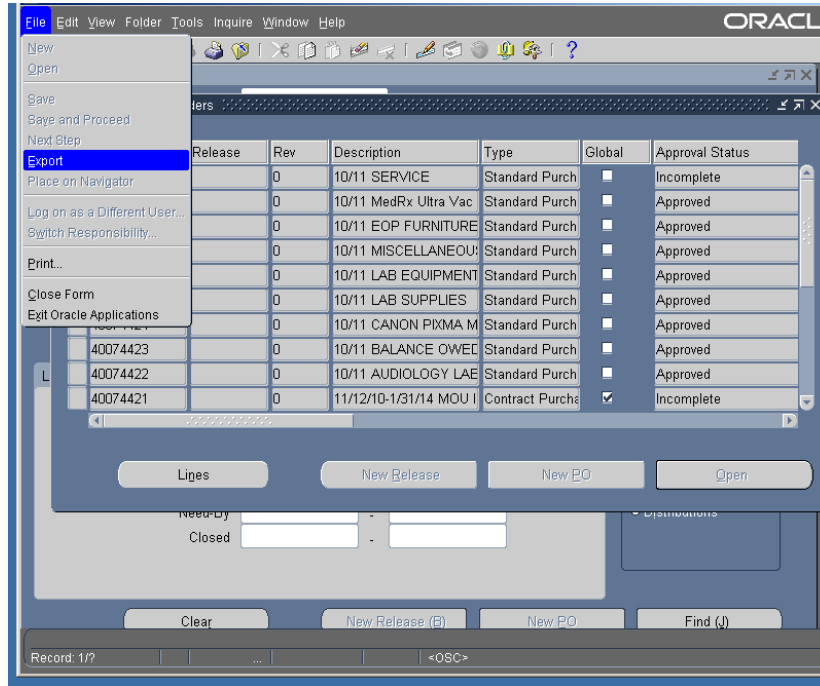


Figure III.10

11. Click on <Save> (see Figure III.11)

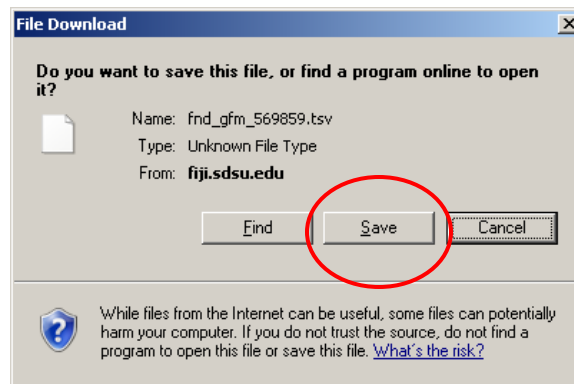


Figure III.11

12. In the <Save As> window, select <desktop> and <Save> (see Figure III.12)

Recommended Desktop Settings for Oracle eBS Applications and MarkView Imaging

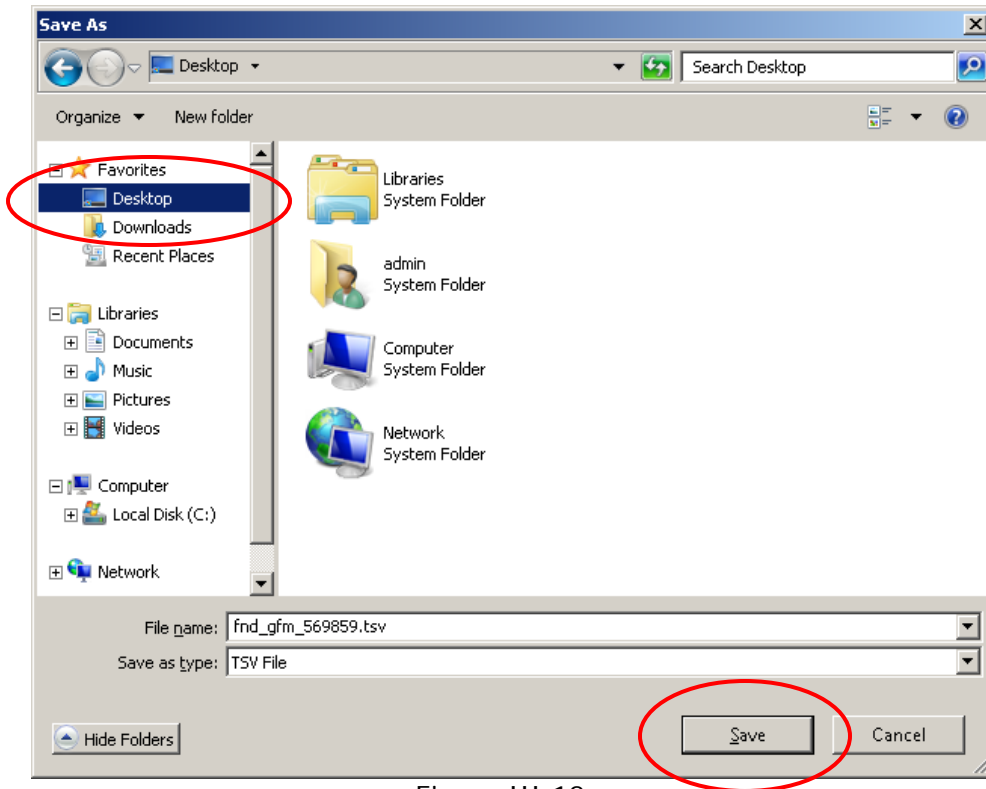


Figure III.12

13. When the download is complete, select <Close> (see Figure III.13)

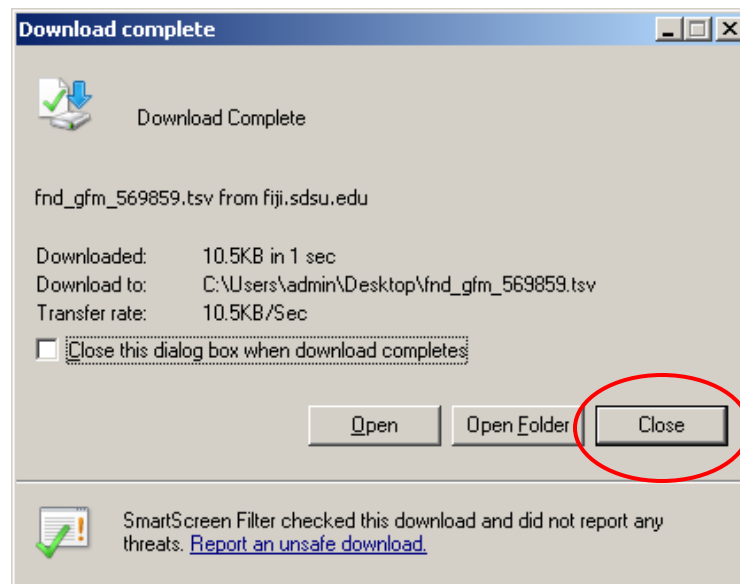


Figure III.13

14. Navigate to the desktop, right-click on the file and select <Select a program from a list of installed programs> (see Figure III.14)

Recommended Desktop Settings for Oracle eBS Applications and MarkView Imaging

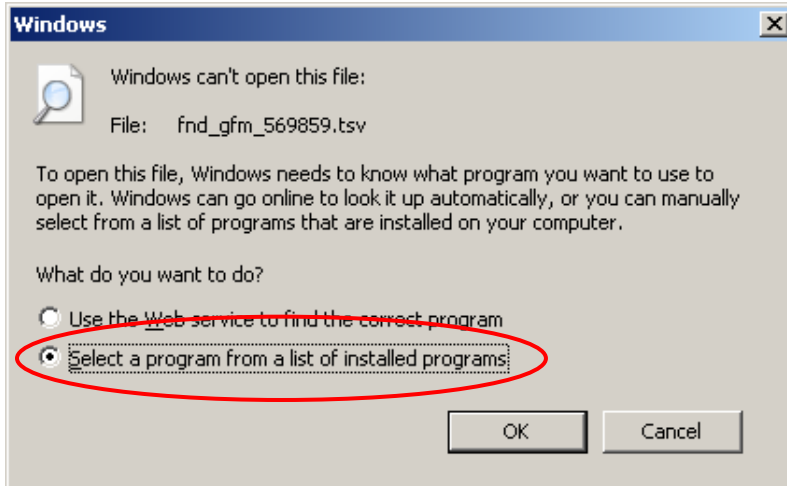


Figure III.14

15. Click on <Browse> (see Figure III.15)

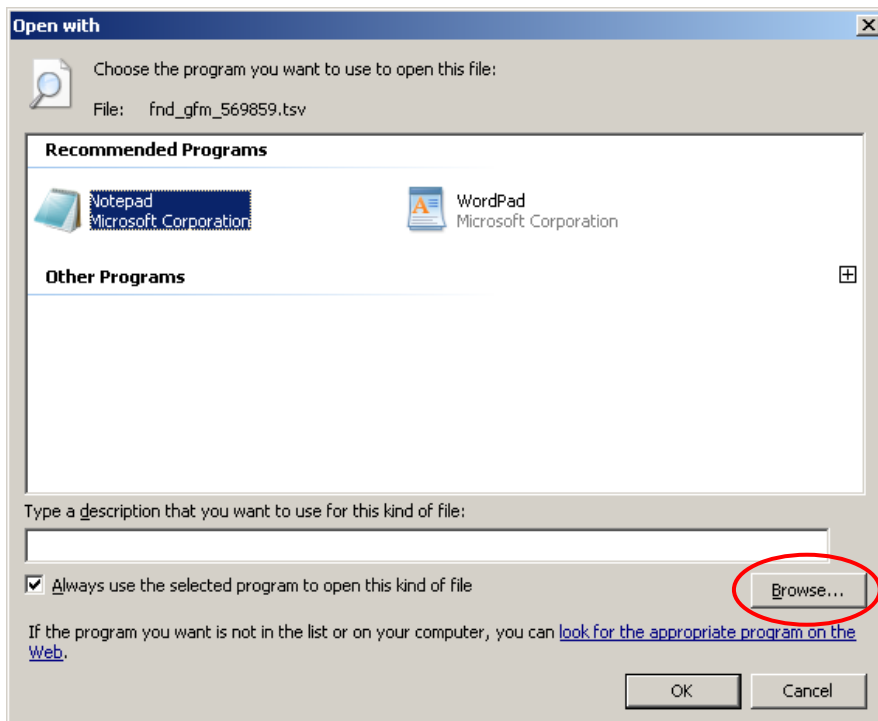


Figure III.15

Recommended Desktop Settings for Oracle eBS Applications and MarkView Imaging

16. Find Microsoft Office – typically this is installed under c:\program files\microsoft office\... (see Figure III.16)

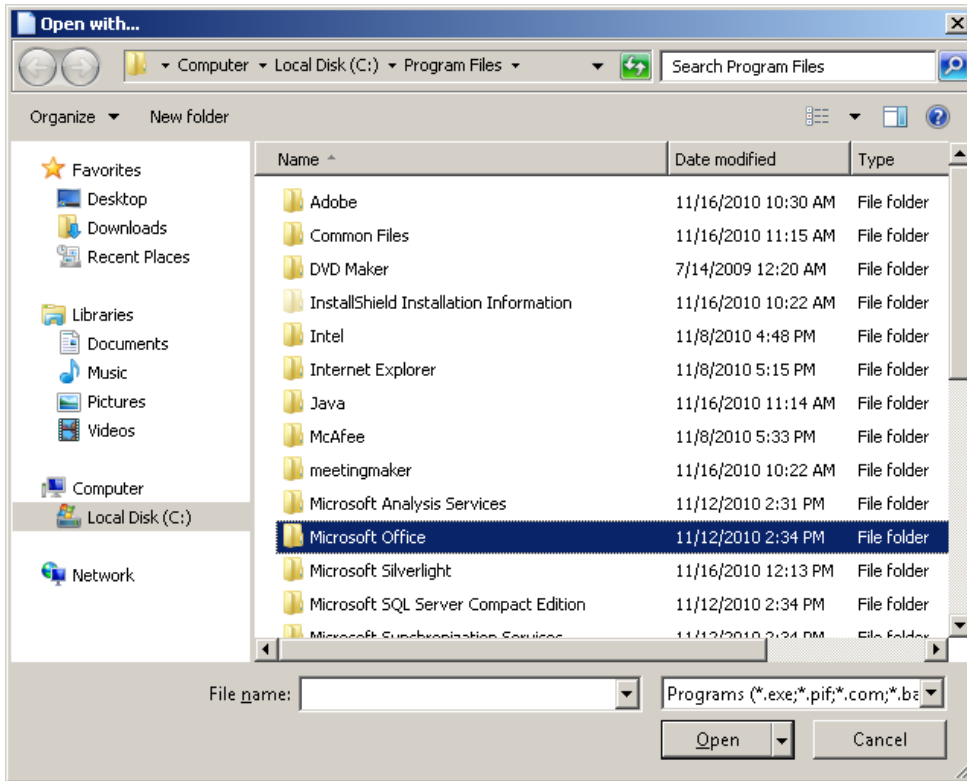


Figure III.16

17. Find <Office 12 (if you have Office 2007) or Office 14 (if you have Office 2010)> (see Figure III.17)

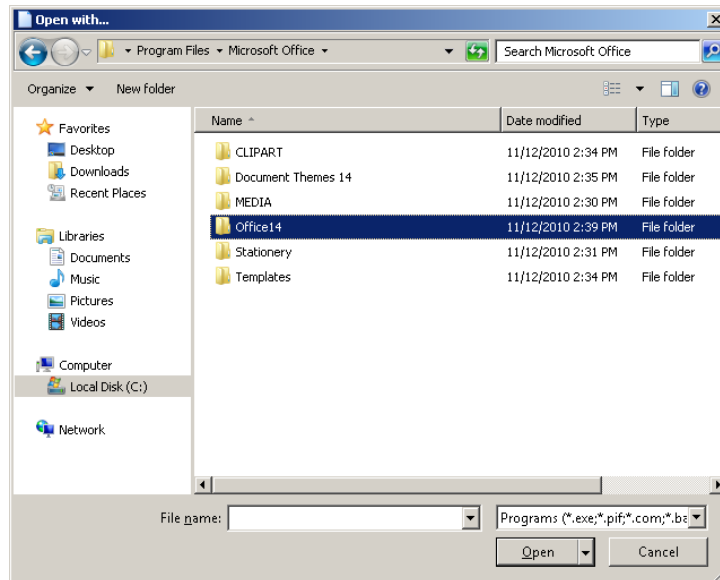


Figure III.17

Recommended Desktop Settings for Oracle eBS Applications and MarkView Imaging

18. Doubleclick <EXCEL.EXE> (See Figure III.18)

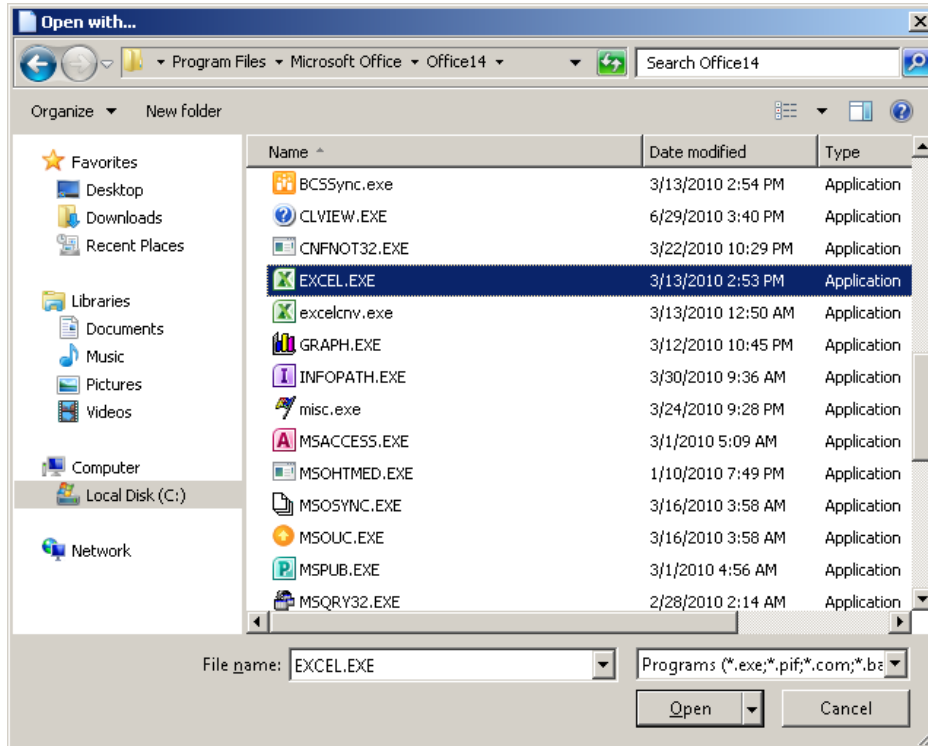


Figure III.18

19. With Microsoft Excel Microsoft Corporation highlighted, check <Always use the selected program to open this kind of file> and click on <OK> (see Figure III.19)

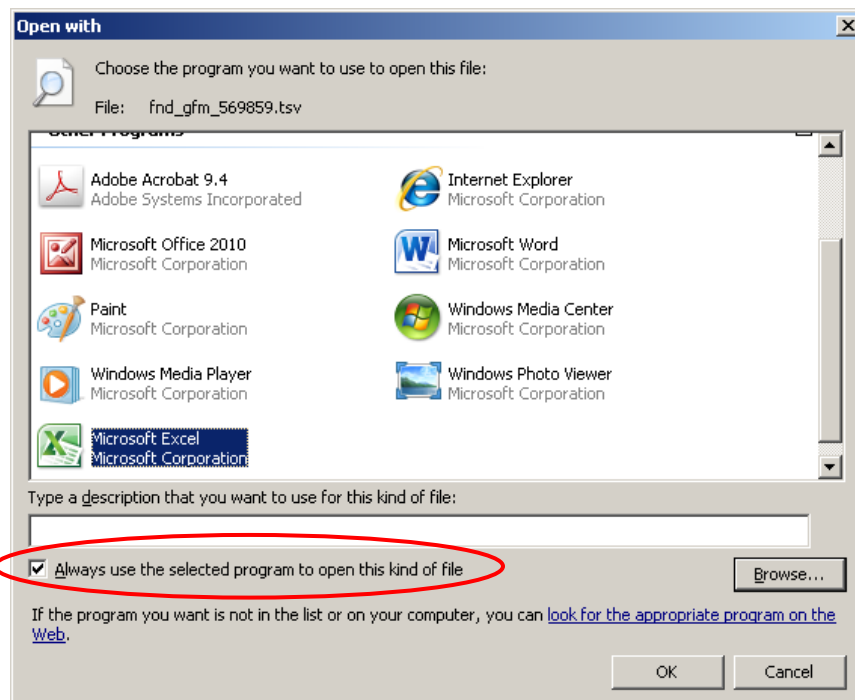


Figure III.19

Recommended Desktop Settings for Oracle eBS Applications and MarkView Imaging

20. The data from the query will then open in Excel (see Figure III.20)

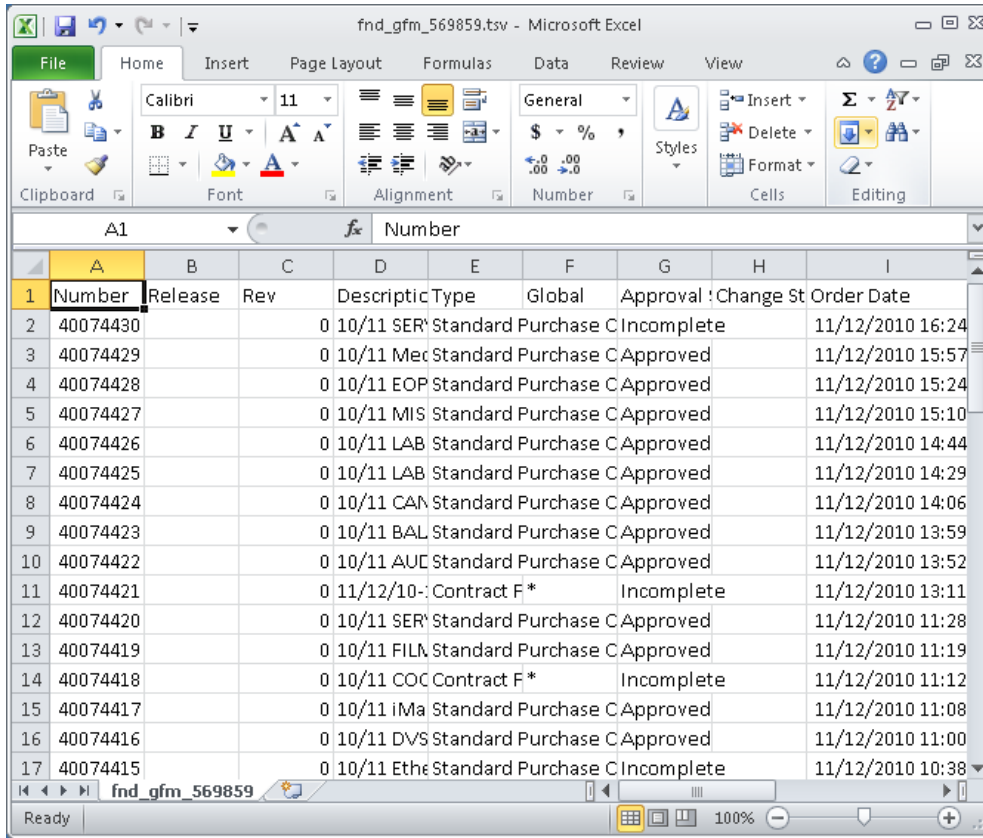


Figure III.20

DocumentControl

Date	Author	Version	Change Reference
12/6/2006	Donna Roelofsz	1.00	Created
6/1/2008	Dennis Espineli	1.01	Updated changes
3/12/2009	Dennis Espineli	2.00	Updated changes/Version Control
8/26/2009	Donna Roelofsz	3.00	Updated changes/Version Control
9/28/2009	Donna Roelofsz	4.00	Updated changes/Version Control
2/16/2010	Donna Roelofsz	5.00	Updated changes/Version Control
11/19/2010	Donna Roelofsz	6.00	Updated changes/Version Control
4/29/2011	Donna Roelofsz	7.00	Updated changes/Version Control