

# Organizational Chart

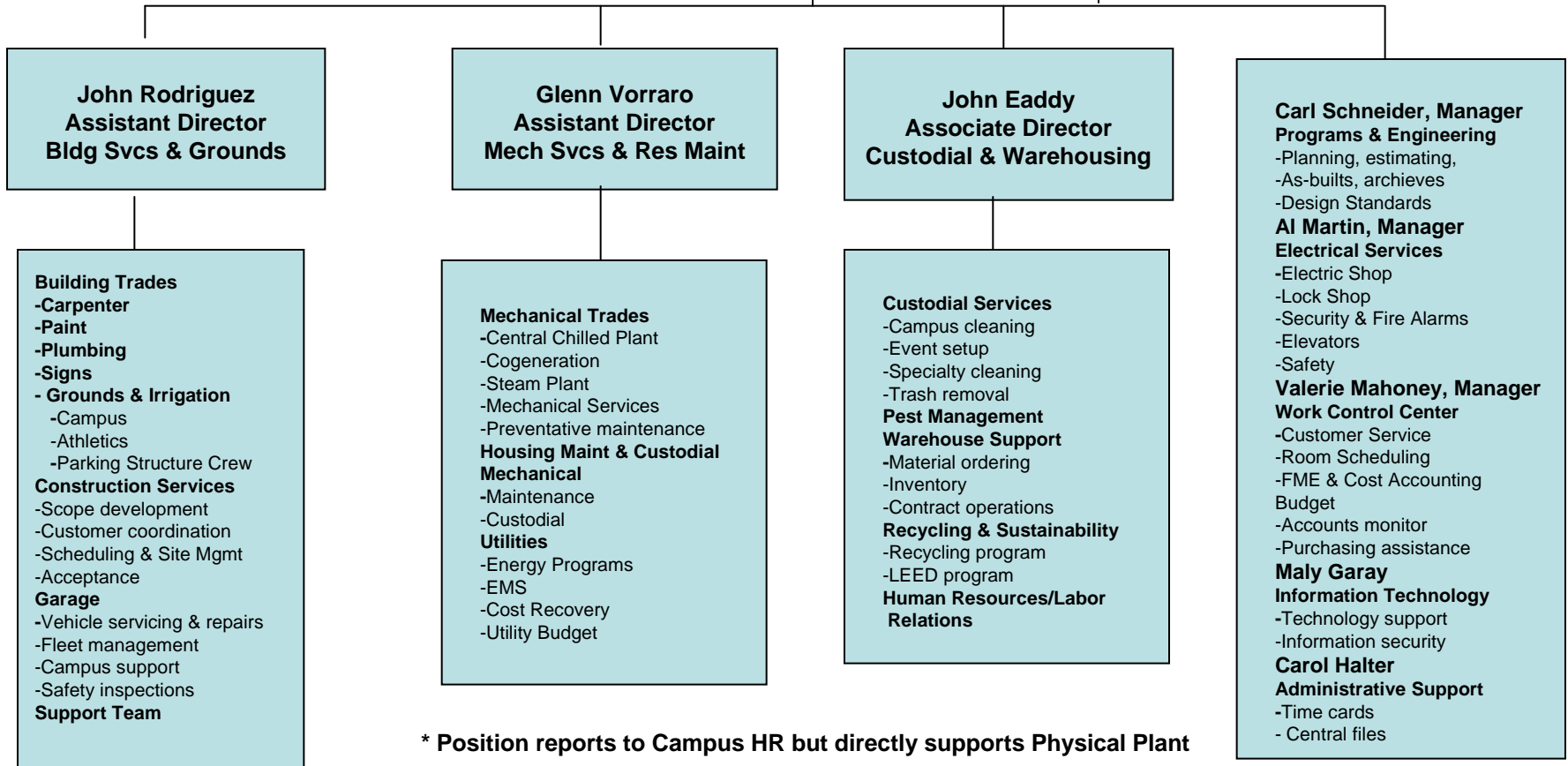
October 1, 2008



**Bob Schulz**  
Associate Vice President  
for  
Operations

**Joe Patterson**  
Director  
for  
Physical Plant

**Lisa Scott \***  
Human Resources Manager



**John Rodriguez**  
Assistant Director  
Bldg Svcs & Grounds

**Glenn Vorraro**  
Assistant Director  
Mech Svcs & Res Maint

**John Eaddy**  
Associate Director  
Custodial & Warehousing

**Carl Schneider, Manager**  
**Programs & Engineering**  
-Planning, estimating,  
-As-builts, archives  
-Design Standards  
**AI Martin, Manager**  
**Electrical Services**  
-Electric Shop  
-Lock Shop  
-Security & Fire Alarms  
-Elevators  
-Safety  
**Valerie Mahoney, Manager**  
**Work Control Center**  
-Customer Service  
-Room Scheduling  
-FME & Cost Accounting  
Budget  
-Accounts monitor  
-Purchasing assistance  
**Maly Garay**  
**Information Technology**  
-Technology support  
-Information security  
**Carol Halter**  
**Administrative Support**  
-Time cards  
- Central files

**Building Trades**  
-Carpenter  
-Paint  
-Plumbing  
-Signs  
- Grounds & Irrigation  
-Campus  
-Athletics  
-Parking Structure Crew  
**Construction Services**  
-Scope development  
-Customer coordination  
-Scheduling & Site Mgmt  
-Acceptance  
**Garage**  
-Vehicle servicing & repairs  
-Fleet management  
-Campus support  
-Safety inspections  
**Support Team**

**Mechanical Trades**  
-Central Chilled Plant  
-Cogeneration  
-Steam Plant  
-Mechanical Services  
-Preventative maintenance  
**Housing Maint & Custodial**  
**Mechanical**  
-Maintenance  
-Custodial  
**Utilities**  
-Energy Programs  
-EMS  
-Cost Recovery  
-Utility Budget

**Custodial Services**  
-Campus cleaning  
-Event setup  
-Specialty cleaning  
-Trash removal  
**Pest Management**  
**Warehouse Support**  
-Material ordering  
-Inventory  
-Contract operations  
**Recycling & Sustainability**  
-Recycling program  
-LEED program  
**Human Resources/Labor Relations**

\* Position reports to Campus HR but directly supports Physical Plant