

APPENDIX T
PUBLIC OUTREACH MATERIALS

NOTICE OF AVAILABILITY

**NOTICE OF AVAILABILITY
OF DRAFT ENVIRONMENTAL IMPACT REPORT
SDSU 2007 CAMPUS MASTER PLAN REVISION**

Notice of Availability. San Diego State University ("SDSU") has prepared a Draft Environmental Impact Report ("EIR") (SCH No. 2007021020) to analyze the potential environmental effects of the proposed SDSU 2007 Campus Master Plan Revision ("proposed project"). The proposed project component sites are located throughout the SDSU campus in San Diego, California.

The 2007 Campus Master Plan Revision will provide a framework for implementing SDSU's goals and programs for the campus by identifying needed buildings, facilities, improvements and services to support campus growth and development from the current SDSU enrollment of 25,000 full-time equivalent students ("FTES") to a new Campus Master Plan enrollment of 35,000 FTES by the 2024-25 academic year. The increase in FTES will equate to a gradual increase in total student enrollment of an estimated 11,385 students by 2024-25. To accommodate the projected student increase, the proposed project involves the near-term and long-term development of classroom, student housing, faculty/staff housing, research, and student support facilities on approximately 55 acres of land located within the SDSU central campus, Alvarado and Adobe Falls areas. The proposed project will enable SDSU to meet projected increases in student demand for higher education, as well as further enhance SDSU's status as a premier undergraduate, graduate and research university.

The Draft EIR determined that the proposed project would result in significant and unavoidable impacts to aesthetics/visual quality, air quality, and transportation/circulation. The Draft EIR further determined that any potentially significant impacts associated with the following environmental impact categories would be mitigated to a level below significant: Biological Resources; Cultural Resources; Geotechnical/Soils; Hazards and Hazardous Materials; Hydrology and Water Quality; Land Use and Planning; Noise; Paleontological Resources; Population and Housing; and, Public Utilities and Service Systems.

Public Review Period. The Draft EIR will be available for public review and comment for a 45-day period, beginning June 12, 2007, and ending on July 27, 2007. Written comments regarding environmental issues raised in the Draft EIR must be received by mail or facsimile no later than 5:00 P.M., Friday, July 27, 2007. Please direct all comments to:

Lauren Cooper
Associate Director, Department of Facilities Planning, Design and Construction
Administration Building, Room 130
San Diego State University
5500 Campanile Drive
San Diego, California 92182-1624
Fax: (619) 594-4500

Copies of the Draft EIR are available for review at the following locations: (1) College Rolando Branch Library, 6600 Montezuma Road, San Diego, California; (2) Allied Gardens/Benjamin Branch Library, 5188 Zion Avenue, San Diego, California; and (3) SDSU Love Library, Government Publications, 3rd Floor. Copies of the Draft EIR and all reference materials also are available for review at SDSU Department of Facilities Planning, Design and Construction, Administration Building, Room 130, contact person: Lauren Cooper, Project Manager, (619) 594-5224. The Draft EIR also is available for review on the internet at www.sdsu.edu/masterplan. Copies of the Draft EIR may be purchased by contacting Vinnie Fitzgerald, Legal Reprographics, 110 W. "C" Street, Suite 1600, San Diego, California 92101, (619) 234-0660.

PROOF OF PUBLICATION

Affidavit of Publication

GATZKE, DILLON & BALANCE LLP

ATTN: MICHAEL HABERKORN

1525 FARADAY AVE #150

CARLSBADE, CA., 92008

STATE OF CALIFORNIA} ss.
County of San Diego}

The Undersigned, declares under penalty of perjury under the laws of the State of California: That....She is a resident of the County of San Diego. THAT....She is and at all times herein mentioned was a citizen of the United States, over the age of twenty-one years, and thatShe is not a party to, nor interested in the above entitled matter; thatShe is..... Chief Clerk for the publisher of

The San Diego Union-Tribune

a newspaper of general circulation, printed and published daily in the City of San Diego, County of San Diego, and which newspaper is published for the dissemination of local news and intelligence of a general character, and which newspaper at all the times herein mentioned had and still has a bona fide subscription list of paying subscribers, and which newspaper has been established, printed and published at regular intervals in the said City of San Diego, County of San Diego, for a period exceeding one year next preceding the date of publication of the notice hereinafter referred to, and which newspaper is not devoted to nor published for the interests, entertainment or instruction of a particular class, profession, trade, calling, race, or denomination, or any number of same; that the notice of which the annexed is a printed copy, has been published in each regular and entire issue of said newspaper and not in any supplement thereof on the following date, to-wit:

JUNE 12, 2007

Victoria Kelly
Chief Clerk for the Publisher

Affidavit of Publication of

Legal Classified Advertisement

Ad #2276524

Ordered by: NANCY HOSKING

NOTICE OF AVAILABILITY OF DRAFT ENVIRONMENTAL IMPACT REPORT SDSU 2007 CAMPUS MASTER PLAN REVISION

Notice of Availability. San Diego State University (SDSU) has prepared a Draft Environmental Impact Report (EIR) (SCH No. 2007021020) to analyze the potential environmental effects of the proposed SDSU 2007 Campus Master Plan Revision (proposed project). The proposed project component sites are located throughout the SDSU campus in San Diego, California.

The 2007 Campus Master Plan Revision will provide a framework for implementing SDSU's goals and programs for the campus by identifying needed buildings, facilities, improvements and services to support campus growth and development from the current SDSU enrollment of 25,000 full-time equivalent students (FTEs) for a new Campus Master Plan enrollment of 35,000 FTEs by the 2024-25 academic year. The increase in FTEs will equate to a gradual increase in total student enrollment of an estimated 11,385 students by 2024-25. To accommodate the projected student increase, the proposed project involves the near-term and long-term development of classroom, student housing, faculty/staff housing, research, and student support facilities on approximately 55 acres of land located within the SDSU central campus, Alvarado and Adobe Falls areas. The proposed project will enable SDSU to meet projected increases in student demand for higher education, as well as further enhance SDSU's status as a premier undergraduate, graduate and research university. The Draft EIR determines that the proposed project would result in significant and unavoidable impacts to aesthetics/visual quality, air quality, and transportation/circulation. All other impacts identified in the Draft EIR can be mitigated to a level below significant.

The Draft EIR will be available for public review and comment for a 45-day period beginning June 12, 2007, and ending on July 27, 2007. Written comments regarding environmental issues raised in the Draft EIR must be received by mail or facsimile no later than 5:00 P.M. Friday, July 27, 2007. Please direct all comments to:

Lauren Cooper
Associate Director
Department of
Facilities Planning,
Design and
Construction
Administration
Building, Room 130
San Diego State
University
5500 Campanile Drive
San Diego,
California 92182-1624
Fax: (619) 594-4500

Copies of the Draft EIR are available for review at the following locations: (1) College Rolando Branch Library, 6000 Montezuma Road, San Diego, California; (2) Allied Gardens/Benjamin Branch Library, 5188 Zion Avenue, San Diego, California; and (3) SDSU Cove Library, Government Publications, 3rd floor. Copies of the Draft EIR and all reference materials also are available for review at SDSU, Department of Facilities Planning, Design and Construction, Administration Building, Room 130; contact person: Lauren Cooper, Project Manager, (619) 594-5224. The Draft EIR also is available for review on the internet at:

www.sdsu.edu/
masterplan
Copies of the Draft EIR may be purchased by contacting: Winnie Fitzgerald, Legal/Reprographics, 110 W. G Street, Suite 1800, San Diego, CA 92101, (619) 594-4500.

COUNTY CLERK NOA POSTING

**NOTICE OF AVAILABILITY
OF DRAFT ENVIRONMENTAL IMPACT REPORT
SDSU 2007 CAMPUS MASTER PLAN REVISION**

JUN 12 2007

A. Consul

BY _____ DEPUTY

Notice of Availability. San Diego State University ("SDSU") has prepared a Draft Environmental Impact Report ("EIR") (SCH No. 2007021020) to analyze the potential environmental effects of the proposed SDSU 2007 Campus Master Plan Revision ("proposed project"). The proposed project component sites are located throughout the SDSU campus in San Diego, California.

The 2007 Campus Master Plan Revision will provide a framework for implementing SDSU's goals and programs for the campus by identifying needed buildings, facilities, improvements and services to support campus growth and development from the current SDSU enrollment of 25,000 full-time equivalent students ("FTES") to a new Campus Master Plan enrollment of 35,000 FTES by the 2024-25 academic year. The increase in FTES will equate to a gradual increase in total student enrollment of an estimated 11,385 students by 2024-25. To accommodate the projected student increase, the proposed project involves the near-term and long-term development of classroom, student housing, faculty/staff housing, research, and student support facilities on approximately 55 acres of land located within the SDSU central campus, Alvarado and Adobe Falls areas. The proposed project will enable SDSU to meet projected increases in student demand for higher education, as well as further enhance SDSU's status as a premier undergraduate, graduate and research university.

The Draft EIR determined that the proposed project would result in significant and unavoidable impacts to aesthetics/visual quality, air quality, and transportation/circulation. The Draft EIR further determined that any potentially significant impacts associated with the following environmental impact categories would be mitigated to a level below significant: Biological Resources; Cultural Resources; Geotechnical/Soils; Hazards and Hazardous Materials; Hydrology and Water Quality; Land Use and Planning; Noise; Paleontological Resources; Population and Housing; and, Public Utilities and Service Systems.

Public Review Period. The Draft EIR will be available for public review and comment for a 45-day period, beginning June 12, 2007, and ending on July 27, 2007. Written comments regarding environmental issues raised in the Draft EIR must be received by mail or facsimile no later than 5:00 P.M., Friday, July 27, 2007. Please direct all comments to:

Lauren Cooper
Associate Director, Department of Facilities Planning, Design and Construction
Administration Building, Room 130
San Diego State University
5500 Campanile Drive
San Diego, California 92182-1624
Fax: (619) 594-4500

Copies of the Draft EIR are available for review at the following locations: (1) College Rolando Branch Library, 6600 Montezuma Road, San Diego, California; (2) Allied Gardens/Benjamin Branch Library, 5188 Zion Avenue, San Diego, California; and (3) SDSU Love Library, Government Publications, 3rd Floor. Copies of the Draft EIR and all reference materials also are available for review at SDSU Department of Facilities Planning, Design and Construction, Administration Building, Room 130, contact person: Lauren Cooper, Project Manager, (619) 594-5224. The Draft EIR also is available for review on the internet at www.sdsu.edu/masterplan. Copies of the Draft EIR may be purchased by contacting Vinnie Fitzgerald, Legal Reprographics, 110 W. "C" Street, Suite 1600, San Diego, California 92101, (619) 234-0660.

FILED IN THE OFFICE OF THE COUNTY CLERK
San Diego County on JUN 12 2007
Posted JUN 12 2007 Removed JUL 12 2007
Returned to agency on JUL 12 2007
Deputy A. Consul

GATZKE DILLON & BALLANCE LLP

ATTORNEYS & COUNSELORS AT LAW

EMERALD LAKE CORPORATE CENTRE
1525 FARADAY AVENUE, SUITE 150

CARLSBAD, CALIFORNIA 92008

TELEPHONE 760.431.9501

FACSIMILE 760.431.9512

OF COUNSEL

MICHAEL SCOTT GATZKE

ANTHONY T. DITTY

June 12, 2007

By: Hand Delivery

County of San Diego Recorder/Clerk
The County Administration Center
1600 Pacific Highway, Room 206, MS A-33
San Diego, California 92101

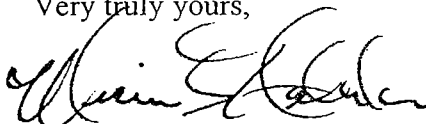
*Re: Posting of Notice of Availability, Draft Environmental Impact Report
SDSU 2007 Campus Master Plan Revision*

Dear County Clerk:

Enclosed please find a copy of the "Notice of Availability of Draft Environmental Impact Report, San Diego State University 2007 Campus Master Plan Revision" ("NOA"). In accordance with the requirements of California Environmental Quality Act ("CEQA") Guidelines Section 15087(d), please post the NOA in the Office of the County Clerk for a period of thirty (30) days. Section 15087(d) requires that the NOA be posted within 24 hours of receipt.

Thank you for your attention to this matter. Please do not hesitate to contact me if you have any questions.

Very truly yours,



Michael S. Haberkorn

of

Gatzke Dillon & Ballance LLP

MSH/lm
Enclosure

NOA MAILING LIST

SDSU 2007 Campus Master Plan Revision
Notice of Availability re Draft EIR Mailed June 12, 2007

NO.	NAME & ADDRESS	COMMENTS/DATE RECEIVED
	Federal Agencies	
1.	U.S. Fish and Wildlife Service Carlsbad Fish and Wildlife Office Therese O'Rourke, Assistant Field Supervisor 6010 Hidden Valley Road Carlsbad, CA 92011	
2.	U.S. Fish & Wildlife Service, Pacific Region California/Nevada Operations Office Steve Thompson, Operations Manager 2800 Cottage Way Sacramento, CA 95825	
3.	U.S. Army Corps of Engineers San Diego Field Office Robert Smith Laurie Ann Monarres 16885 West Bernardo Drive, Suite 300A San Diego, CA 92127	
	State Agencies	
4.	State of California Governor's Office of Planning and Research, State Clearinghouse and Planning Unit Scott Morgan, Senior Planner 1400 Tenth Street Sacramento, CA 95812-3044	
5.	California Department of Parks And Recreation Office of Historic Preservation State Historic Preservation Officer 1416 Ninth Street, Room 1442 Sacramento, CA 95814	
6.	Department of California Highway Patrol J.K. Bailey, Captain 2555 First Ave. Sacramento, CA 95818	
7.	Division of State Architect San Diego Regional Office Mahendra Mehta, Regional Manager 16680 West Bernardo Drive San Diego, CA 92127	

NO.	NAME & ADDRESS	COMMENTS/DATE RECEIVED
8.	Native American Heritage Commission Carol Gaubatz, Program Analyst 915 Capital Mall, Room 364 Sacramento, CA 95814	
9.	State of California Department of Fish & Game South Coast Regional Office Michael Mulligan, Deputy Regional Manager Conservation Planning Supervisor Heather Schmalbach 4949 Viewridge Avenue San Diego, CA 92123	
10.	San Diego Regional Water Quality Control Board John Robertus, Executive Director Christopher Means 9174 Sky Park Court, Suite 100 San Diego, CA 92123-4340	
11.	San Diego Air Pollution Control District 10124 Old Grove Road San Diego, CA 92131	
12.	State of California Department of Forestry & Fire Protection Office of the State Fire Marshall Steve Guarino, Code Enforcement South 602 East Huntington, Suite A Monrovia, CA 91016-3600	
13.	State of California Dept. of Toxic Substances Control Southern California Cleanup Operations Branch – Cypress Greg Holmes, Unit Chief 5796 Corporate Avenue Cypress, CA 90630-4732	
14.	State of California Department of Transportation Caltrans – District 11 Development Review Branch Alex Cox, Chief 2829 Juan Street San Diego, CA 92110	
15.	California State Senate Senator Dede Alpert, 39th District 1557 Columbia Street (District Office) San Diego, CA 92101-2934	

NO.	NAME & ADDRESS	COMMENTS/DATE RECEIVED
16.	California State Senate Senator Christine Kehoe 2445 Fifth Avenue, Suite 200 San Diego, CA 92101	
	Local Agencies	
17.	County of San Diego Recorder/Clerk The County Administration Center 1600 Pacific Highway, Room 206, MS, A-33 San Diego, CA 92101	
18.	City of San Diego Planning Department Mary Wright 202 C Street, 4 th Floor San Diego, CA 92101	
19.	San Diego Association of Governments (SANDAG) Stephan M. Vance Senior Regional Planner 401 B Street, Suite 800 San Diego, CA 92101-4231	
20.	San Diego County Department of Planning and Land Use Eric Gibson, Deputy Director 5201 Ruffin Road, Suite B San Diego, CA 92123	
21.	Office of the City Attorney City of San Diego Marianne Greene, Deputy City Attorney 1200 Third Avenue, Suite 1620 San Diego, CA 92101-4108	
22.	Office of the City Attorney City of San Diego Christine M. Fitzgerald, Deputy City Attorney Joe B. Cordileone, Deputy City Attorney 1200 Third Avenue, Suite 1620 San Diego, CA 92101-4108	
23.	San Diego Police Department Chief William Lansdowne 1401 Broadway San Diego, CA 92101-5729	
24.	San Diego County Water Authority 4677 Overland Avenue San Diego, CA 92123	

NO.	NAME & ADDRESS	COMMENTS/DATE RECEIVED
25.	City of San Diego Fire-Rescue Department Tracy Jarman, Chief Samuel L. Oates, Deputy Fire Chief 1010 Second Avenue, Suite 300 San Diego, CA 92101	
26.	City of San Diego Planning Department Melissa Devine College Area Community Planner 202-C Street, MS4A San Diego, CA 92101	
27.	City of San Diego Planning Department Lesley Henegar Navajo Area Community Planner 202-C Street, MS4A San Diego, CA 92101	
28.	City of San Diego Development Services Terri Bumgardner Robert J. Manis, Assistant Deputy Director Land Development Review Division 1222 First Avenue, MS 501 San Diego, CA 92101-4155	
29.	Metropolitan Transit Development Board Conan Cheung, Planning Director 1255 Imperial Avenue, Suite 1000 San Diego, CA 92101-7490	
30.	City of San Diego Engineering and Capital Projects Patti Boekamp, Acting Deputy Director 1010 Second Avenue, Suite 800 San Diego, CA 92101	
31.	City of San Diego Wetland Advisory Board Robin Stribley 202 C Street, MS 35 San Diego, CA 92101	
32.	City of San Diego Water Department Carolyn McQueen, Associate Planner 600 B Street, Suite 700, MS 907 San Diego, CA 92101-4506	
33.	College Community Project Area Committee Michael Fortney, Project Manager c/o City of San Diego Redevelopment Agency 600 B Street, Suite 400 San Diego, CA 92101	

NO	NAME & ADDRESS	COMMENTS/DATE RECEIVED
34.	City of La Mesa Bill Chopyk, Planning & Development Services Director 8130 Allison Avenue P. O. Box 937 La Mesa, California 91944-0937	
35.	Jim Madaffer, City Councilmember 7th District City Administration Building 202 "C" Street San Diego, CA 92101	
36.	San Diego Historical Resources Board City Administration Building Council Committee Room, 12th Floor 202 C Street San Diego, CA 92101	
37.	Land Use and Economic Development Jim Waring, Deputy Chief City of San Diego 202 C Street, 9 th Floor San Diego, CA 92101	
38.	City of El Cajon Kathi Henry, City Manager Mary Ann Prall 200 East Main Street El Cajon, California 92020-3996	
39.	San Diego County Dept. of Environmental Health 1255 Imperial Avenue, 3 rd Floor San Diego, CA 92101	
40.	Gary Klockenga Government Publications Librarian San Diego Public Library 820 'E' Street San Diego, CA 92101	
41.	Allied Gardens/Benjamin Branch Library 5188 Zion Avenue San Diego, CA 92120-2728	
42.	College Rolando Branch Library 6600 Montezuma Road San Diego, CA 92115	
43.	San Carlos Branch Library 7265 Jackson Drive San Diego, CA 92119	
44.	SDSU Library Government Publications, 3 rd Floor 5500 Campanile Drive San Diego, CA 92182-8050	

NO	NAME & ADDRESS	COMMENTS/DATE RECEIVED
45.	Assistant Chief of Police William Maheu San Diego Police Department 1401 Broadway San Diego, CA 92101-5729	
46.	Merrilee Willoughby, Demographer San Diego City Schools 4100 Normal Street Annex 2, Room 101 San Diego, CA 92103-2682	
Organizations		
47.	CSU Physical Planning and Development California State University David A. Rosso 401 Golden Shore Long Beach, California 90802-4209	
48.	Navajo Community Planners Incorporated Matt Adams, Chair c/o Building Industry Association 9201 Spectrum Center Blvd., Suite 110 San Diego, CA 92123	
49.	Allied Gardens Community Council Cindy Martin P.O. Box 600425 San Diego, CA 92160-0425	
50.	Associated Students of SDSU San Diego State University Matt Keipper, President 5500 Campanile Drive Lower Aztec Center, Room 104 San Diego, California 92182-7804	
51.	Jamul Indian Village Lee Acebedo, Chairman P.O. 612 Jamul, California 91935	
52.	La Posta Band of Mission Indians Gwendolyn Parrada, Chairperson Crestwood Road P.O. Box 1048 Boulevard, California 91905	
53.	Manzanita Band of Mission Indians Leroy J. Elliott, Chairperson P.O. Box 1302 Boulevard, California 91905	

NO	NAME & ADDRESS	COMMENTS/DATE RECEIVED
54.	The Barona Band of Mission Indians Clifford M. LaChappa, Tribal Chairperson 1095 Barona Road Lakeside, CA 92040	
55.	The Campo Band of Mission Indians Paul Cuero, Jr., Chairperson 36190 Church Road Campo, CA 91906	
56.	The Mesa Grande Band of Mission Indians Mark Romero, Chairman P.O. Box 270 Santa Ysabel, CA 92070	
57.	San Pasqual Band of Mission Indians Allen Lawson, Chairman 27458 North Lake Wohlford Road Valley Center, CA 92082	
58.	The Santa Ysabel Band of Mission Indians Johnny Hernandez, Chairman P.O. Box 130 Santa Ysabel, CA 92070	
59.	The Sycuan Band of Mission Indians David Tucker, Chairperson 5459 Dehesa Road Cajon, CA 92019	
60.	The Ewiiapaap Tribal Office Harlan Pinto, Chairperson 4054 Willow Road Alpine, CA 91901	
61.	The Viejas Band of Mission Indians Steven Tesam, Chairperson P.O. Box 908 Alpine, CA 91903	
62.	Kumeyaa Cultural Repatriation Committee Steve Banegas 1095 Barona Road Lakeside, CA 92040	
63.	San Diego County Archaeological Society, Inc. Environmental Review Committee James W. Royle, Jr., Chairperson P.O. Box 81106 San Diego, CA 92138-1106	
64.	San Diego Audubon Society Chris Redfern, Executive Director 4891 Pacific Highway, Suite 112 San Diego, CA 92110	

NO	NAME & ADDRESS	COMMENTS/DATE RECEIVED
65.	San Diego Historical Society David S. Watson, Executive Director 1649 El Prado, Suite 3 San Diego, CA 92101	
66.	Mission Trails Recreational Park Citizens Advisory Committee Dorothy Leonard, Chair Walter Odenning, Ph.D. 4245 Tambor Court San Diego, CA 92124	
67.	Friends of Adobe Falls Audrey Delahoussaye 5681 Del Cerro Boulevard San Diego CA 92120	
68.	Smoke Tree Adobe Falls Owners Association Patrick Culkin, President, Board of Directors 5657 Adobe Falls Road San Diego, CA 92120	
69.	California Native Plant Society c/o Natural History Museum P.O. Box 121390 San Diego, CA 92112	
70.	Del Cerro Action Council Anne Brunkow, President P.O. Box 600801 San Diego, CA 92160	
71.	Rob Hutsel San Diego River Park Foundation 4891 Pacific Highway, Suite 114 San Diego, CA 92110	
72.	College Area Community Council c/o Doug Case, Chair 5444 Reservoir Drive #20 San Diego, CA 92120	
73.	Sandy Alter, CACC 5520 Mary Lane Drive San Diego, CA 92115	
74.	John Adamske, CACC 5105 Remington Road San Diego, CA 92115	
75.	Aaryn Belfer, CACC 6321 Mesita Drive San Diego, CA 92115	
76.	Michae Bloom, CACC 5505 Mary Lane Drive San Diego, CA 92115	

NO.	NAME & ADDRESS	COMMENTS/DATE RECEIVED
77.	Jim Boggus, CACC 5394 Caminito Velasquez San Diego, California 92124	
78.	Dan Cornthwaite, CACC 5161 College Gardens Court San Diego, CA 92115	
79.	Sally Ellis, CACC 5511 Drover Drive San Diego, CA 92115	
80.	Judi Hopps, CACC 5041 Tierra Baja Way San Diego, CA 92115	
81.	Rev. Doug Knutson-Keller, CACC 7544 Volclay Drive San Diego, CA 92119	
82.	Christina Kish, CACC 4704 College Avenue San Diego, CA 92115	
83.	Mike Matthews, CACC 5076 College Place San Diego, CA 92115	
84.	Charles Maze, CACC 4677 El Cerrito Drive San Diego, CA 92115	
85.	Martin Montesano, CACC 5840 Lindo Paseo Drive, #18 San Diego, CA 92115	
86.	Scott Moomjian, CACC 427 C Street, Suite 220 San Diego, CA 92101	
87.	Rosary Grace Nepi, CACC 5105 Walsh Way San Diego, CA 92115	
88.	Thomas Phelps, CACC 5255 Rincon Street San Diego, CA 92115	
89.	Jan Riley, CACC 4655 60 th Street San Diego, CA 92115	
90.	Harold Webber, CACC 4968 Cresita Drive San Diego, CA 92115	
91.	Individuals	

NO.	NAME & ADDRESS	COMMENTS/DATE RECEIVED
	Architects Mosher Drew Watson Ferguson Edie Andrade Marketing Director 4206 West Point Loma Blvd., Suite 200 San Diego, CA 92110	
92.	Hope Engineering Carol Gilmore, Marketing Coordinator 1301 Third Avenue, Suite 300 San Diego, CA 92101	
93.	Alvarado Hospital Medical Center Harris Koenig, Chief Executive Officer 6655 Alvarado Road San Diego, CA 92120-5298	
94.	The Carolyn M. Holmer Trust US Bank, H. Eugene Swantz, Jr. Joan Rapp, Co-Trustees Re: 6367 Alvarado Court 400 Prospect Street La Jolla, CA 92037	
95.	S. Akotles 6130 Romany Drive San Diego, CA 92120-4610	
96.	Don & Maxine Amundson 6143 Arno Drive San Diego, California 92120	
97.	Emily J. Anderson 6186 Del Cerro Blvd. San Diego, CA 92120	
98.	Steve Barlow 5130 68 th Street San Diego, CA 92115	
99.	The Matthew Basham Family 6142 Romany Drive San Diego, CA 92120	
100.	Emma Lou Beecroft 6286 Lambda Drive San Diego, CA 92190-4606	
101.	John Benz 6151 Del Cerro Blvd. San Diego, CA 92120	
102.	R. L. Berlet 4962 Cresita Drive San Diego, CA 92115	
103.	Samuel W. Bettwy Susan R. Benninghoff-Bettwy 5924 Arboles Street San Diego, CA 92120	

NO.	NAME & ADDRESS	COMMENTS/DATE RECEIVED
104.	Len Bloom 2851 Camino del Rio South Suite 400 San Diego, CA 92108	
105.	Walter and Jacqueline Bochenek 5873 Madra Avenue San Diego, CA 92120	
106.	Joyce Pepper and Paul Bragoli 5956 Adobe Falls Road San Diego, CA 92120	
107.	Priscilla Bramlette 5882 Adobe Falls Road San Diego, CA 92120	
108.	Sue Braun 6515 Crystallaire Drive San Diego, CA 92120	
109.	Jane F. Bredon 4052 Loma Riviera Circle San Diego, CA 92110	
110.	Alice Buck 1555 Sixth Avenue San Diego, CA 92101-3215	
111.	James and Patricia Call 6285 Rockhurst Drive San Diego, CA 92120	
112.	Sharon Carter 5926 Madra Avenue San Diego, CA 92120	
113.	Fred & Michele Casey 5811 Adobe Falls Road San Diego, CA 92120	
114.	Stephen Chan 5678 Adobe Falls Place San Diego, CA 92120	
115.	Randy and Toni Chase 5758 Malvern Court San Diego, CA 92120	
116.	Celia Chavez 5272 Tipton Street San Diego, CA 92115	
117.	Rosemary Chosn 5611 Raymar Avenue San Diego, CA 92120	
118.	Warren Clement 6054 College Avenue San Diego, CA 92120	
119.	Joe and Carolyn Colmie 5667-A Adobe Falls Road San Diego, CA 92182	

NO	NAME & ADDRESS	COMMENTS/DATE RECEIVED
120.	Mr. Charlie Conatser Ms. Shirley Conatser 6247 Chrismark Avenue San Diego, CA 92120	
121.	Ann B. Cottrell 5111 Manhasset San Diego, CA 92115	
122.	Pat Culkin 5683-C Adobe Falls Road San Diego, CA 92120	
123.	Anita Colmie 5563-B Adobe Falls Road San Diego, CA 92120	
124.	Dudek and Associates June Collins 605 Third Street Encinitas, CA 92024	
125.	Roberta and Donald Eidemiller 5328 Hewlett Drive San Diego, CA 92115	
126.	Marsha Eiseman 6166 Arno Drive San Diego, CA 92120	
127.	Kevin J. Elliott, President Roel Construction Co., Inc. 3366 Kurtz Street San Diego, CA 92110	
128.	Kathy Fennell 6003 Adobe Falls Road San Diego, CA 92120	
129.	Craig & Angie Fisher 5605 Adobe Falls Place San Diego, CA 92120	
130.	Scott Flaming 6128 Lourdes Terrace San Diego, CA 92120	
131.	Dr. and Mrs. Donald R. Fleming 5968 Caminito De La Taza San Diego, CA 92120	
132.	Ray Fluta LCDR U.S. Navy, Ret 5581A Adobe Falls Road San Diego, CA 92120	
133.	Lotte Garber 5670 Genoa Drive San Diego, CA 92120	
134.	Steve Gilbert 5832 Lancaster Drive San Diego, CA 92120-4533	

NO.	NAME & ADDRESS	COMMENTS/DATE RECEIVED
135.	Agatha Graney 6142 Arno Drive San Diego, CA 92120	
136.	Pauline Graves 5125 Alumni Place San Diego, CA 92115	
137.	Pamela & John Gray 5787 Adobe Falls Road San Diego, CA 92120	
138.	Estelle Greenstein 6235 Rockhurst Drive San Diego, CA 92120	
139.	John Hale, P.E. 5871 Adobe Falls Road San Diego, CA 92120	
140.	Albert E. Harasty 6170 Romany Drive San Diego, CA 92120	
141.	Oakley S. Harper 6229 Cypress Point Road San Diego, CA 92120	
142.	Toby S. Hartman 5637-C Adobe Falls Road San Diego, CA 92120	
143.	Jeffrey and Marilyn Hinck 5664 Del Cerro Blvd. San Diego, CA 92120	
144.	Morton and Naomi Hirshman 5855 Madra Avenue San Diego, CA 92120	
145.	Michele Nash-Hoff 6360 Glenmont Street San Diego, CA 92120	
146.	Sarah B. Husbands 6375 Elmhurst Drive San Diego, CA 92120	
147.	Patricia Isberg 6006 Del Cerro Blvd. San Diego, CA 92120	
148.	David Jespersen 6219 Rockhurst Drive San Diego, CA 92120	
149.	Stuart R. and Yoelles Josephs 6408 Crystallaire Drive San Diego, CA 92120-3834	
150.	Abe Kassam and Paula Kassam, Trustees PAK Properties Trust 5942 Madra Avenue San Diego, CA 92120	

NO	NAME & ADDRESS	COMMENTS/DATE RECEIVED
151.	David A. and Claudia Kay 750 "B" Street, Suite 1850 San Diego, CA 92101	
152.	Stanley E. King 4360 Woodland Drive La Mesa, CA 91941	
153.	Carol Klinger 5565C Adobe Falls Road San Diego, CA 92120	
154.	Evelyn Kooperman Silver Gate Publications 7579 Rowena Street San Diego, CA 92119	
155.	Armin and Rhea Kuhlman 5069 Catocin Drive San Diego, CA 92115	
156.	Jennifer Landers 5971 Lance Street San Diego, CA 92120	
157.	Steve Laub 7593 El Paseo Street La Mesa, CA 91942	
158.	Larry Lipera 6466 Wandermere Drive San Diego, CA 92120	
159.	Douglas and Beverly Livingston 6266 Lambda Drive San Diego, CA 92120	
160.	Ivan Jackson & Leisa Lukes 6167 Arno Drive San Diego, CA 92120	
161.	Mrs. Betty Lyberg 6174 Camino Rico San Diego, CA 92120-3118	
162.	Don Macdonald 6274 Rockhurst Drive San Diego, CA 92120	
163.	Richard Boyden Macfie 6251 Brynwood Court San Diego, CA 92120	
164.	Robert Mackey 5814 Malvern Court San Diego, CA 92120	
165.	Judith Mansfield 6555 Norman Lane San Diego, CA 92120	
166.	Mary Manzella 6019 Adobe Falls Road San Diego, CA 92120	

NO.	NAME & ADDRESS	COMMENTS/DATE RECEIVED
167.	Glen & Shirley Marcus 5640 Arno Drive San Diego, CA 92120	
168.	Nancy A. Marlin, Provost San Diego State University 5500 Campanile Drive San Diego, CA 92182-8010	
169.	Tom Martin 5616 Marne Avenue San Diego, CA 92120	
170.	Juan A. Martinez Jacqueline Kenworthy-Martinez 5786 Adobe Falls Road San Diego, CA 92120	
171.	Brian J. McCullough 5853 Del Cerro Blvd. San Diego, CA 92120	
172.	Amy Jo McVeigh 6149 Arno Drive San Diego, CA 92120	
173.	Mary and Bob Medearis 5862 Lancaster Drive San Diego, CA 92120	
174.	Dorothy Millbern 5463 Fremontia Lane Sand Diego, CA 92115	
175.	Walter Mitte 5940 Adobe Falls Road San Diego, CA 92120	
176.	Robert Montana 6223 Mary Lane Drive San Diego, CA 92115	
177.	Arthur S. Moreau, Esq. Carey L. Cooper, Esq. Klinedinst PC 501 West Broadway, Suite 600 San Diego, CA 92101	
178.	Thomas J. Mulder 6525 Del Cerro Blvd. San Diego, CA 92120	
179.	Helen Norman 6148 Arno Drive San Diego, CA 92120	
180.	David & Barbara Oliver 5401 Del Cerro Boulevard San Diego, CA 92120	
181.	Jack & Caterina Palestini 6011 Adobe Falls Road San Diego, CA 92120	

NO.	NAME & ADDRESS	COMMENTS/DATE RECEIVED
182.	Michael and Mary Parende 5651 Genoa Drive San Diego, CA 92120	
183.	Renee Park 5634 Adobe Falls Place Del Cerro, CA 92120	
184.	Paula Brown Peeling 5908 Adobe Falls Road San Diego, CA 92120	
185.	Milo and Jeanette Peterson 5737-A Adobe Falls Road San Diego, CA 92110	Returned undeliverable/ unable to forward.
186.	John F. Pilch P.O. Box 19246 San Diego, CA 92159-0246	
187.	Jeri Deneen and John Powell Deneen Powell Atelier, Inc. 5924 Adobe Falls Road San Diego, CA 92120	
188.	Elein S. Racine 5922 Eldergardens Street San Diego, CA 92120	
189.	Alan C. Reed 5821 Del Cerro Blvd. San Diego, CA 92120	
190.	Robert R. Rinehart 6434 Del Cerro Blvd. San Diego, CA 92120	
191.	Sheryl Schultz-Rose 5779 Theta Place San Diego, CA 92120	
192.	Marc Rosenberg 5945 Adobe Falls Road San Diego, CA 92120	
193.	Sally Roush 5500 Campanile Drive MC 1620 San Diego, CA 92182	
194.	William Rowland 4540 El Cerrito Drive San Diego, CA 92115	
195.	Mark Rawlins 6652 Del Cerro Blvd. San Diego, CA 92120	
196.	Alex and Kathryn Ruiz 6110 Capri Drive San Diego, CA 92120	

NO	NAME & ADDRESS	COMMENTS/DATE RECEIVED
197.	Jerry Satuloff 5581-C Adobe Falls Road San Diego, CA 92120	
198.	Moselio Schaechter Adjunct Professor, San Diego State University 6345 Rockhurst Drive San Diego, CA 92120	
199.	Ray & Suzanna Schumacher 6160 Arno Drive San Diego, CA 92120	
200.	Roy H. Seifert, Land Architect 10780 Queen Avenue La Mesa, CA 91941	
201.	Michael and Margaret Sexton 6335 Lambda Drive San Diego, CA 92120	
202.	Clydene J. Shepherd 5657 Adobe Falls Place San Diego, CA 92120	
203.	Frank Shine 5555 Yerba Anita Drive San Diego, CA 92115-1026	
204.	Bill & Edie Singer 6002 Adobe Falls Road San Diego, CA 92120	
205.	Mary Skulavik 6393 Park Ridge Blvd. San Diego, CA 92120	
206.	Mr. Charles E. Sloan 5860 Arboles Street San Diego, CA 92120	
207.	Greta Sloan Sloan Property Management 5173 Waring Road PMB 350 San Diego, CA 92120-2705	
208.	Troy L. Smith 5824 Malvern Ct. San Diego, CA 92120	
209.	John M. Stevenson 6210 Camino Corto San Diego, CA 92120	
210.	Robert G. Stewart 6337 Dwane Avenue San Diego, CA 92120	
211.	Nancy Sussman, Esq. 5667 Raymar Avenue San Diego, CA 92120	

NO	NAME & ADDRESS	COMMENTS/DATE RECEIVED
212.	Patricia Teaze 5681 Linfield Avenue San Diego, CA 92120	
213.	Ron and Dolores Thiel 6212 Capri Drive San Diego, CA 92120	
214.	Amye & Mae Cubberley-Thomas 6107 Arno Drive San Diego, CA 92120	
215.	Susan Thomas 6154 Arno Drive San Diego, CA 92120	
216.	Mark Thomsen, MTS 1255 Imperial Avenue, Suite 1000 San Diego, CA 92101	
217.	Catherine J. Todd 6027 Adobe Falls Road San Diego, CA 92120	
218.	Walt and Marilyn Tom 6184 Arno Drive San Diego, CA 92120	
219.	Mike Toomey 6126 Capri Drive San Diego, CA 92120	
220.	Dolores P. Torik 56731-C Adobe Falls Road San Diego, CA 92120	
221.	Warren B. Treisman 6398 Del Cerro Blvd., Ste. 5 San Diego, CA 92120	
222.	Martin J. Tully 6112 Rockhurst Drive San Diego, CA 92120	
223.	Edward and Barbara Underwood 5995 Del Cerro Blvd. San Diego, CA 92120	
224.	Dr. Barbara Walsh 6454 Caminito Estrellado San Diego, CA 92120	
225.	Barbara Weldon 6131 Romany Drive San Diego, CA 92120	
226.	Wertz McDade Wallace Moot & Brower Jenny K. Goodman, Esq. J. Michael McDade, Esq. 945 Fourth Avenue San Diego, CA 92101	

NO.	NAME & ADDRESS	COMMENTS/DATE RECEIVED
227.	Ron and Jeanne Withem 6151 Capri Drive San Diego, CA 92120-4648	
228.	Jay Wilson 5836 Arbolos Street San Diego, CA 92120	
229.	Lynn A. Wink 5823 Adobe Falls Road San Diego, CA 92120	
230.	Jo Ruth Wright 5631-D Adobe Falls Road San Diego, CA 92120	
231.	Valarie Yruretgoyna 9222 Wister Drive La Mesa, CA 91941	
232.	Ruth Zlotoff 5983 Del Cerro Blvd. San Diego, CA 92120	

RESPONSIBLE AGENCY DEIR DISTRIBUTION

GATZKE DILLON & BALLANCE LLP

ATTORNEYS & COUNSELORS AT LAW
EMERALD LAKE CORPORATE CENTRE
1525 FARADAY AVENUE, SUITE 150
CARLSBAD, CALIFORNIA 92008
TELEPHONE 760.431.9501
FACSIMILE 760.431.9512

OF COUNSEL
MICHAEL SCOTT GATZKE
ANTHONY T. DITTY

June 11, 2007

By: Overnight Delivery

U.S. Fish and Wildlife Service
Carlsbad Fish and Wildlife Office
Therese O'Rourke, Assistant Field Supervisor
Ayoola Folarin
6010 Hidden Valley Road
Carlsbad, CA 92011

*Re: San Diego State University 2007 Campus Master Plan Revision Draft
Environmental Impact Report (SCH No. 2007021020)*

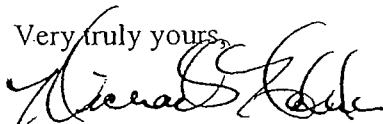
Dear Ms. O'Rourke and Ms. Folarin,

As a follow-up to our meeting with Ms. Folarin on April 5, 2007 at San Diego State University ("SDSU"), enclosed please find a copy of the SDSU 2007 Campus Master Plan Revision Draft Environmental Impact Report ("Draft EIR"). Also enclosed is a copy of the Notice of Availability of Draft EIR. The Draft EIR comment period begins June 12, 2007 and concludes July 27, 2007.

Over the next several weeks, we would like to schedule a consultation meeting with you, in conjunction with the U.S. Army Corps of Engineers, California Department of Fish and Game, and San Diego Regional Water Quality Control Board, to discuss the Draft EIR. Scott Boczkiewicz or Sarah Lozano of Dudek & Associates, the consulting firm that prepared the Draft EIR Biological Resources section, will contact you to schedule the meeting.

In the interim, please do not hesitate to contact me, or Ms. Lozano, if you have any questions regarding this matter. Ms. Lozano can be reached at 760-479-4251. Thank you.

Very truly yours,



Michael S. Haberkorn

of

Gatzke Dillon & Ballance LLP

MSH/lm
Enclosures

NOTICE OF AVAILABILITY
OF DRAFT ENVIRONMENTAL IMPACT REPORT
SDSU 2007 CAMPUS MASTER PLAN REVISION

Notice of Availability. San Diego State University ("SDSU") has prepared a Draft Environmental Impact Report ("EIR") (SCH No. 2007021020) to analyze the potential environmental effects of the proposed SDSU 2007 Campus Master Plan Revision ("proposed project"). The proposed project component sites are located throughout the SDSU campus in San Diego, California.

The 2007 Campus Master Plan Revision will provide a framework for implementing SDSU's goals and programs for the campus by identifying needed buildings, facilities, improvements and services to support campus growth and development from the current SDSU enrollment of 25,000 full-time equivalent students ("FTES") to a new Campus Master Plan enrollment of 35,000 FTES by the 2024-25 academic year. The increase in FTES will equate to a gradual increase in total student enrollment of an estimated 11,385 students by 2024-25. To accommodate the projected student increase, the proposed project involves the near-term and long-term development of classroom, student housing, faculty/staff housing, research, and student support facilities on approximately 55 acres of land located within the SDSU central campus, Alvarado and Adobe Falls areas. The proposed project will enable SDSU to meet projected increases in student demand for higher education, as well as further enhance SDSU's status as a premier undergraduate, graduate and research university.

The Draft EIR determined that the proposed project would result in significant and unavoidable impacts to aesthetics/visual quality, air quality, and transportation/circulation. The Draft EIR further determined that any potentially significant impacts associated with the following environmental impact categories would be mitigated to a level below significant: Biological Resources; Cultural Resources; Geotechnical/Soils; Hazards and Hazardous Materials; Hydrology and Water Quality; Land Use and Planning; Noise; Paleontological Resources; Population and Housing; and, Public Utilities and Service Systems.

Public Review Period. The Draft EIR will be available for public review and comment for a 45-day period, beginning June 12, 2007, and ending on July 27, 2007. Written comments regarding environmental issues raised in the Draft EIR must be received by mail or facsimile no later than 5:00 P.M., Friday, July 27, 2007. Please direct all comments to:

Lauren Cooper
Associate Director, Department of Facilities Planning, Design and Construction
Administration Building, Room 130
San Diego State University
5500 Campanile Drive
San Diego, California 92182-1624
Fax: (619) 594-4500

Copies of the Draft EIR are available for review at the following locations: (1) College Rolando Branch Library, 6600 Montezuma Road, San Diego, California; (2) Allied Gardens/Benjamin Branch Library, 5188 Zion Avenue, San Diego, California; and (3) SDSU Love Library, Government Publications, 3rd Floor. Copies of the Draft EIR and all reference materials also are available for review at SDSU Department of Facilities Planning, Design and Construction, Administration Building, Room 130, contact person: Lauren Cooper, Project Manager, (619) 594-5224. The Draft EIR also is available for review on the internet at www.sdsu.edu/masterplan. Copies of the Draft EIR may be purchased by contacting Vinnie Fitzgerald, Legal Reprographics, 110 W. "C" Street, Suite 1600, San Diego, California 92101, (619) 234-0660.

Lili Mansour

Draft 2007 EIR
SDSU

From: webship@gso.com
Sent: Tuesday, June 12, 2007 10:29 AM
To: Lili Mansour
Subject: GSO Shipment Delivery Notification - 507263572

DELIVERY NOTIFICATION:

Tracking Number: 507263572

Ship Date: 06/11/2007

Ship From: LILI MANSOUR, GATZKE DILLION & BALLANCE LLP

Ship To: THERESE O'ROURKE, U.S. FISH AND WILDLIFE SERVICE, CARLSBAD OFFICE
6010 HIDDEN VALLEY ROAD
CARLSBAD CA 92011

Billing Reference: 501.13

Delivery Date: Jun 12, 2007 10:24 AM

Signed By: P. Diiorio

SENDER COMMENTS:

No sender comments for this shipment

Please use the following link to track the history of this shipment online: <http://www.gso.com/deliveryinforequest.aspx?trackingnum=507263572>

Please DO NOT REPLY TO THIS MESSAGE. For general inquiries, contact GSO customer service at 1-800-322-5555

Visit us at: <http://www.gso.com>

This email and any files transmitted with it are confidential and intended solely for the use of the individual or entity to whom they are addressed. If you are not the intended recipient of this email, you are notified that disclosing, copying, distributing this message is strictly prohibited. If you have received this email in error, please delete it immediately.

GATZKE DILLON & BALLANCE LLP

ATTORNEYS & COUNSELORS AT LAW

EMERALD LAKE CORPORATE CENTRE

1525 FARADAY AVENUE, SUITE 150

CARLSBAD, CALIFORNIA 92008

TELEPHONE 760.431.9501

FACSIMILE 760.431.9512

OF COUNSEL

MICHAEL SCOTT GATZKE

ANTHONY T. DITTY

June 11, 2007

By: Overnight Delivery

U.S. Army Corps of Engineers
San Diego Field Office
Robert Smith
Laurie Ann Monarres
16885 West Bernardo Drive, Suite 300A
San Diego, CA 92127

*Re: San Diego State University 2007 Campus Master Plan Revision Draft
Environmental Impact Report (SCH No. 2007021020)*

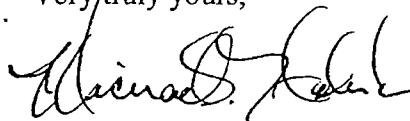
Dear Mr. Smith and Ms. Monarres,

As a follow-up to our meeting with Ms. Monarres on April 5, 2007 at San Diego State University ("SDSU"), enclosed please find a copy of the SDSU 2007 Campus Master Plan Revision Draft Environmental Impact Report ("Draft EIR"). Also enclosed is a copy of the Notice of Availability of Draft EIR. The Draft EIR comment period begins June 12, 2007 and concludes July 27, 2007.

Over the next several weeks, we would like to schedule a consultation meeting with you, in conjunction with the U.S. Fish and Wildlife Service, California Department of Fish and Game, and San Diego Regional Water Quality Control Board to discuss the Draft EIR. Scott Boczkiewicz or Sarah Lozano of Dudek & Associates, the consulting firm that prepared the Draft EIR Biological Resources section, will contact you to schedule the meeting.

In the interim, please do not hesitate to contact me, or Ms. Lozano, if you have any questions regarding this matter. Ms. Lozano can be reached at 760-479-4251. Thank you.

Very truly yours,



Michael S. Haberkorn

of

Gatzke Dillon & Ballance LLP

MSH/lm
Enclosures

**NOTICE OF AVAILABILITY
OF DRAFT ENVIRONMENTAL IMPACT REPORT
SDSU 2007 CAMPUS MASTER PLAN REVISION**

Notice of Availability. San Diego State University ("SDSU") has prepared a Draft Environmental Impact Report ("EIR") (SCH No. 2007021020) to analyze the potential environmental effects of the proposed SDSU 2007 Campus Master Plan Revision ("proposed project"). The proposed project component sites are located throughout the SDSU campus in San Diego, California.

The 2007 Campus Master Plan Revision will provide a framework for implementing SDSU's goals and programs for the campus by identifying needed buildings, facilities, improvements and services to support campus growth and development from the current SDSU enrollment of 25,000 full-time equivalent students ("FTES") to a new Campus Master Plan enrollment of 35,000 FTES by the 2024-25 academic year. The increase in FTES will equate to a gradual increase in total student enrollment of an estimated 11,385 students by 2024-25. To accommodate the projected student increase, the proposed project involves the near-term and long-term development of classroom, student housing, faculty/staff housing, research, and student support facilities on approximately 55 acres of land located within the SDSU central campus, Alvarado and Adobe Falls areas. The proposed project will enable SDSU to meet projected increases in student demand for higher education, as well as further enhance SDSU's status as a premier undergraduate, graduate and research university.

The Draft EIR determined that the proposed project would result in significant and unavoidable impacts to aesthetics/visual quality, air quality, and transportation/circulation. The Draft EIR further determined that any potentially significant impacts associated with the following environmental impact categories would be mitigated to a level below significant: Biological Resources; Cultural Resources; Geotechnical/Soils; Hazards and Hazardous Materials; Hydrology and Water Quality; Land Use and Planning; Noise; Paleontological Resources; Population and Housing; and, Public Utilities and Service Systems.

Public Review Period. The Draft EIR will be available for public review and comment for a 45-day period, beginning June 12, 2007, and ending on July 27, 2007. Written comments regarding environmental issues raised in the Draft EIR must be received by mail or facsimile no later than 5:00 P.M., Friday, July 27, 2007. Please direct all comments to:

Lauren Cooper
Associate Director, Department of Facilities Planning, Design and Construction
Administration Building, Room 130
San Diego State University
5500 Campanile Drive
San Diego, California 92182-1624
Fax: (619) 594-4500

Copies of the Draft EIR are available for review at the following locations: (1) College Rolando Branch Library, 6600 Montezuma Road, San Diego, California; (2) Allied Gardens/Benjamin Branch Library, 5188 Zion Avenue, San Diego, California; and (3) SDSU Love Library, Government Publications, 3rd Floor. Copies of the Draft EIR and all reference materials also are available for review at SDSU Department of Facilities Planning, Design and Construction, Administration Building, Room 130, contact person: Lauren Cooper, Project Manager, (619) 594-5224. The Draft EIR also is available for review on the internet at www.sdsu.edu/masterplan. Copies of the Draft EIR may be purchased by contacting Vinnie Fitzgerald, Legal Reprographics, 110 W. "C" Street, Suite 1600, San Diego, California 92101, (619) 234-0660.

Lili Mansour

Diff 200 EIR
SDSU

From: webship@gso.com
Sent: Tuesday, June 12, 2007 9:44 AM
To: Lili Mansour
Subject: GSO Shipment Delivery Notification - 507263460

DELIVERY NOTIFICATION:

Tracking Number: 507263460

Ship Date: 06/11/2007

Ship From: LILI MANSOUR, GATZKE DILLION & BALLANCE LLP

Ship To: ROBERT SMITH-- LAURIE ANN MONARRES, U.S. ARMY CORPS OF ENGINEERS SAN
DIEGO FIELD OFFIC
16885 WEST BERNARDO DRIVE, SUITE 300A
SAN DIEGO CA 92127

Billing Reference: 501.13

Delivery Date: Jun 12, 2007 09:40 AM

Signed By: L. Cervantes

SENDER COMMENTS:

No sender comments for this shipment

Please use the following link to track the history of this shipment online: <http://www.gso.com/deliveryinforequest.aspx?trackingnum=507263460>

Please DO NOT REPLY TO THIS MESSAGE. For general inquiries, contact GSO customer service at 1-800-322-5555

Visit us at: <http://www.gso.com>

This email and any files transmitted with it are confidential and intended solely for the use of the individual or entity to whom they are addressed. If you are not the intended recipient of this email, you are notified that disclosing, copying, distributing this message is strictly prohibited. If you have received this email in error, please delete it immediately.

GATZKE DILLON & BALLANCE LLP

ATTORNEYS & COUNSELORS AT LAW
EMERALD LAKE CORPORATE CENTRE
1525 FARADAY AVENUE, SUITE 150
CARLSBAD, CALIFORNIA 92008
TELEPHONE 760.431.9501
FACSIMILE 760.431.9512

OF COUNSEL
MICHAEL SCOTT GATZKE
ANTHONY T. DITTY

June 11, 2007

By: Overnight Delivery

State Department of Fish & Game
South Coast Regional Office
Michael Mulligan, Deputy Regional Manager
Heather Schmalbach
4949 Viewridge Avenue
San Diego, CA 92123

*Re: San Diego State University 2007 Campus Master Plan Revision Draft
Environmental Impact Report (SCH No. 2007021020)*

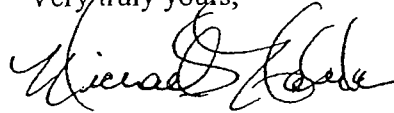
Dear Mr. Mulligan and Ms. Schmalbach,

As a follow-up to our meeting with Ms. Schmalbach on April 5, 2007 at San Diego State University ("SDSU"), enclosed please find a copy of the SDSU 2007 Campus Master Plan Revision Draft Environmental Impact Report ("Draft EIR"). Also enclosed is a copy of the Notice of Availability of Draft EIR. The Draft EIR comment period begins June 12, 2007 and concludes July 27, 2007.

Over the next several weeks, we would like to schedule a consultation meeting with you, in conjunction with the U.S. Fish and Wildlife Service, U.S. Army Corps of Engineers, and San Diego Regional Water Quality Control Board to discuss the Draft EIR. Scott Boczkiewicz or Sarah Lozano of Dudek & Associates, the consulting firm that prepared the Draft EIR Biological Resources section, will contact you to schedule the meeting.

In the interim, please do not hesitate to contact me, or Ms. Lozano, if you have any questions regarding this matter. Ms. Lozano can be reached at 760-479-4251. Thank you.

Very truly yours,



Michael S. Haberkorn
of
Gatzke Dillon & Ballance LLP

MSH/lm
Enclosures

NOTICE OF AVAILABILITY
OF DRAFT ENVIRONMENTAL IMPACT REPORT
SDSU 2007 CAMPUS MASTER PLAN REVISION

Notice of Availability. San Diego State University ("SDSU") has prepared a Draft Environmental Impact Report ("EIR") (SCH No. 2007021020) to analyze the potential environmental effects of the proposed SDSU 2007 Campus Master Plan Revision ("proposed project"). The proposed project component sites are located throughout the SDSU campus in San Diego, California.

The 2007 Campus Master Plan Revision will provide a framework for implementing SDSU's goals and programs for the campus by identifying needed buildings, facilities, improvements and services to support campus growth and development from the current SDSU enrollment of 25,000 full-time equivalent students ("FTES") to a new Campus Master Plan enrollment of 35,000 FTES by the 2024-25 academic year. The increase in FTES will equate to a gradual increase in total student enrollment of an estimated 11,385 students by 2024-25. To accommodate the projected student increase, the proposed project involves the near-term and long-term development of classroom, student housing, faculty/staff housing, research, and student support facilities on approximately 55 acres of land located within the SDSU central campus, Alvarado and Adobe Falls areas. The proposed project will enable SDSU to meet projected increases in student demand for higher education, as well as further enhance SDSU's status as a premier undergraduate, graduate and research university.

The Draft EIR determined that the proposed project would result in significant and unavoidable impacts to aesthetics/visual quality, air quality, and transportation/circulation. The Draft EIR further determined that any potentially significant impacts associated with the following environmental impact categories would be mitigated to a level below significant: Biological Resources; Cultural Resources; Geotechnical/Soils; Hazards and Hazardous Materials; Hydrology and Water Quality; Land Use and Planning; Noise; Paleontological Resources; Population and Housing; and, Public Utilities and Service Systems.

Public Review Period. The Draft EIR will be available for public review and comment for a 45-day period, beginning June 12, 2007, and ending on July 27, 2007. Written comments regarding environmental issues raised in the Draft EIR must be received by mail or facsimile no later than 5:00 P.M., Friday, July 27, 2007. Please direct all comments to:

Lauren Cooper
Associate Director, Department of Facilities Planning, Design and Construction
Administration Building, Room 130
San Diego State University
5500 Campanile Drive
San Diego, California 92182-1624
Fax: (619) 594-4500

Copies of the Draft EIR are available for review at the following locations: (1) College Rolando Branch Library, 6600 Montezuma Road, San Diego, California; (2) Allied Gardens/Benjamin Branch Library, 5188 Zion Avenue, San Diego, California; and (3) SDSU Love Library, Government Publications, 3rd Floor. Copies of the Draft EIR and all reference materials also are available for review at SDSU Department of Facilities Planning, Design and Construction, Administration Building, Room 130, contact person: Lauren Cooper, Project Manager, (619) 594-5224. The Draft EIR also is available for review on the internet at www.sdsu.edu/masterplan. Copies of the Draft EIR may be purchased by contacting Vinnie Fitzgerald, Legal Reprographics, 110 W. "C" Street, Suite 1600, San Diego, California 92101, (619) 234-0660.

Lili Mansour

June 2007

From: webship@gso.com
Sent: Tuesday, June 12, 2007 8:04 AM
To: Lili Mansour
Subject: GSO Shipment Delivery Notification - 507263438

SDS4 Draft EIR

DELIVERY NOTIFICATION:

Tracking Number: 507263438

Ship Date: 06/11/2007

Ship From: LILI MANSOUR, GATZKE DILLION & BALLANCE LLP

Ship To: MICHAEL MULLIGAN, DEPUTY REGIONAL HEATHER SCHMALB, STATE OF
CALIFORNIA DEPT. OF FISH & GAME
SOUTH COAST REGIONAL OFFICE 4949 VIEWRIDGE AVENUE
SAN DIEGO CA 92123

Billing Reference: 501.13

Delivery Date: Jun 12, 2007 08:00 AM

Signed By: D. Duarte

SENDER COMMENTS:

No sender comments for this shipment

Please use the following link to track the history of this shipment online: <http://www.gso.com/deliveryinforequest.aspx?trackingnum=507263438>

Please DO NOT REPLY TO THIS MESSAGE. For general inquiries, contact GSO customer service at 1-800-322-5555

Visit us at: <http://www.gso.com>

This email and any files transmitted with it are confidential and intended solely for the use of the individual or entity to whom they are addressed. If you are not the intended recipient of this email, you are notified that disclosing, copying, distributing this message is strictly prohibited. If you have received this email in error, please delete it immediately.

GATZKE DILLON & BALLANCE LLP

ATTORNEYS & COUNSELORS AT LAW

EMERALD LAKE CORPORATE CENTRE
1525 FARADAY AVENUE, SUITE 150
CARLSBAD, CALIFORNIA 92008
TELEPHONE 760.431.9501
FACSIMILE 760.431.9512

OF COUNSEL
MICHAEL SCOTT GATZKE
ANTHONY T. DITTY

June 11, 2007

By: Overnight Delivery

San Diego Regional Water Quality
Control Board
John Robertus, Executive Director
Christopher Means
Christina Arias
9174 Sky Park Court, Suite 100
San Diego, CA 92123-4340

*Re: San Diego State University 2007 Campus Master Plan Revision Draft
Environmental Impact Report (SCH No. 2007021020)*

Dear Messrs. Robertus, Means and Ms. Arias,

As a follow-up to our meeting with Mr. Means and Ms. Arias on April 5, 2007 at San Diego State University ("SDSU"), enclosed please find a copy of the SDSU 2007 Campus Master Plan Revision Draft Environmental Impact Report ("Draft EIR"). Also enclosed is a copy of the Notice of Availability of Draft EIR. The Draft EIR comment period begins June 12, 2007 and concludes July 27, 2007.

Over the next several weeks, we would like to schedule a consultation meeting with you, in conjunction with the U.S. Fish and Wildlife Service, U.S. Army Corps of Engineers, and California Department of Fish and Game, to discuss the Draft EIR. Scott Boczkiewicz or Sarah Lozano of Dudek & Associates, the consulting firm that prepared the Draft EIR Biological Resources section, will contact you to schedule the meeting.

In the interim, please do not hesitate to contact me, or Ms. Lozano, if you have any questions regarding this matter. Ms. Lozano can be reached at 760-479-4251. Thank you.

Very truly yours,



Michael S. Haberkorn
of
Gatzke Dillon & Ballance LLP

MSH/lm
Enclosures

**NOTICE OF AVAILABILITY
OF DRAFT ENVIRONMENTAL IMPACT REPORT
SDSU 2007 CAMPUS MASTER PLAN REVISION**

Notice of Availability. San Diego State University ("SDSU") has prepared a Draft Environmental Impact Report ("EIR") (SCH No. 2007021020) to analyze the potential environmental effects of the proposed SDSU 2007 Campus Master Plan Revision ("proposed project"). The proposed project component sites are located throughout the SDSU campus in San Diego, California.

The 2007 Campus Master Plan Revision will provide a framework for implementing SDSU's goals and programs for the campus by identifying needed buildings, facilities, improvements and services to support campus growth and development from the current SDSU enrollment of 25,000 full-time equivalent students ("FTES") to a new Campus Master Plan enrollment of 35,000 FTES by the 2024-25 academic year. The increase in FTES will equate to a gradual increase in total student enrollment of an estimated 11,385 students by 2024-25. To accommodate the projected student increase, the proposed project involves the near-term and long-term development of classroom, student housing, faculty/staff housing, research, and student support facilities on approximately 55 acres of land located within the SDSU central campus, Alvarado and Adobe Falls areas. The proposed project will enable SDSU to meet projected increases in student demand for higher education, as well as further enhance SDSU's status as a premier undergraduate, graduate and research university.

The Draft EIR determined that the proposed project would result in significant and unavoidable impacts to aesthetics/visual quality, air quality, and transportation/circulation. The Draft EIR further determined that any potentially significant impacts associated with the following environmental impact categories would be mitigated to a level below significant: Biological Resources; Cultural Resources; Geotechnical/Soils; Hazards and Hazardous Materials; Hydrology and Water Quality; Land Use and Planning; Noise; Paleontological Resources; Population and Housing; and, Public Utilities and Service Systems.

Public Review Period. The Draft EIR will be available for public review and comment for a 45-day period, beginning June 12, 2007, and ending on July 27, 2007. Written comments regarding environmental issues raised in the Draft EIR must be received by mail or facsimile no later than 5:00 P.M., Friday, July 27, 2007. Please direct all comments to:

Lauren Cooper
Associate Director, Department of Facilities Planning, Design and Construction
Administration Building, Room 130
San Diego State University
5500 Campanile Drive
San Diego, California 92182-1624
Fax: (619) 594-4500

Copies of the Draft EIR are available for review at the following locations: (1) College Rolando Branch Library, 6600 Montezuma Road, San Diego, California; (2) Allied Gardens/Benjamin Branch Library, 5188 Zion Avenue, San Diego, California; and (3) SDSU Love Library, Government Publications, 3rd Floor. Copies of the Draft EIR and all reference materials also are available for review at SDSU Department of Facilities Planning, Design and Construction, Administration Building, Room 130, contact person: Lauren Cooper, Project Manager, (619) 594-5224. The Draft EIR also is available for review on the internet at www.sdsu.edu/masterplan. Copies of the Draft EIR may be purchased by contacting Vinnie Fitzgerald, Legal Reprographics, 110 W. "C" Street, Suite 1600, San Diego, California 92101, (619) 234-0660.

Lili Mansour

June 2007

From: webship@gso.com
Sent: Tuesday, June 12, 2007 8:54 AM
To: Lili Mansour
Subject: GSO Shipment Delivery Notification - 507263413

SDS4 Draft EIR

DELIVERY NOTIFICATION:

Tracking Number: 507263413

Ship Date: 06/11/2007

Ship From: LILI MANSOUR, GATZKE DILLION & BALLANCE LLP

Ship To: JOHN ROBERTUS, EXECUTIVE DIRECTOR-- CHRISTOPHER ME, SAN DIEGO REGIONAL
WATER QUALITY CONTROL BOARD
9174 SKY PARK COURT, SUITE 100
SAN DIEGO CA 92123

Billing Reference: 501.13

Delivery Date: Jun 12, 2007 08:51 AM

Signed By: R. Stewart

SENDER COMMENTS:

No sender comments for this shipment

Please use the following link to track the history of this shipment online: <http://www.gso.com/deliveryinforequest.aspx?trackingnum=507263413>

Please DO NOT REPLY TO THIS MESSAGE. For general inquiries, contact GSO customer service at 1-800-322-5555

Visit us at: <http://www.gso.com>

This email and any files transmitted with it are confidential and intended solely for the use of the individual or entity to whom they are addressed. If you are not the intended recipient of this email, you are notified that disclosing, copying, distributing this message is strictly prohibited. If you have received this email in error, please delete it immediately.

GATZKE DILLON & BALLANCE LLP

ATTORNEYS & COUNSELORS AT LAW
EMERALD LAKE CORPORATE CENTRE
1525 FARADAY AVENUE, SUITE 150
CARLSBAD, CALIFORNIA 92008
TELEPHONE 760.431.9501
FACSIMILE 760.431.9512

OF COUNSEL
MICHAEL SCOTT GATZKE
ANTHONY T. DITTY

June 11, 2007

By: Overnight Delivery

State of California
Governor's Office of Planning and Research,
State Clearinghouse and Planning Unit
Scott Morgan, Senior Planner
1400 Tenth Street
Sacramento, CA 95812-3044

Re: San Diego State University 2007 Campus Master Plan Revision Draft Environmental Impact Report (SCH No. 2007021020)

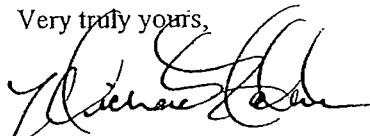
Dear Mr. Morgan,

Enclosed please find the following documents and CD ROMs for processing by State Clearinghouse:

1. Notice of Completion & Environmental Document Transmittal;
2. 15 CD ROM copies of the San Diego State University 2007 Campus Master Plan Revision Draft Environmental Impact Report ("Draft EIR"). Please note that each CD ROM set includes 2 discs; the EIR is on Disc 1, and the EIR Appendices are on Disc 2;
3. 15 paper copies of the Draft EIR Introduction/Executive Summary section;
4. 1 paper copy of the Draft EIR, which is comprised of 3 volumes, Volumes I-III; and
5. Notice of Availability of Draft EIR. Please note that the comment period begins June 12, 2007 and concludes July 27, 2007.

Please contact me if you have any questions regarding this matter. Thank you for your assistance.

Very truly yours,



Michael S. Haberkorn
of
Gatzke Dillon & Ballance LLP

MSH/lm
Enclosures

Notice of Completion & Environmental Document Transmittal

Appendix C

For U.S. Mail: State Clearinghouse, P.O. Box 3044, Sacramento, CA 95812-3044

For Hand Delivery/Street Address: 1400 Tenth Street, Sacramento, CA 95814

SCH# 200702120

Project Title: San Diego State University 2007 Campus Master Plan Revision

Lead Agency: The Board of Trustees of the California State University

Contact Person: Lauren Cooper

Mailing Address: 401 Golden Shore

Phone: (619) 594-5224

City: Long Beach

Zip: 90802

County: Los Angeles

Project Location:

County: San Diego

City/Nearest Community: San Diego

Total Acres: Approx. 55

Cross Streets: Interstate 8 and College Avenue

Zip Code: 92182

Assessor's Parcel No. _____

Section: _____

Twp. _____

Range: _____

Base: _____

Within 2 miles: State Hwy#: Interstate 8

Waterways: n/a

Airports: n/a

Railways: n/a

Schools: n/a

Document Type:

CEQA:

- ☐ NOP ☒ Draft EIR
☐ Early Cons ☐ Supplement to EIR
☐ Neg Dec ☐ Subsequent EIR
☐ Mit Neg Dec ☐ Other: _____

NEPA:

- ☐ NOI
☐ EA
☐ Draft EIS
☐ FONSI

Other:

- ☐ Joint Document
☐ Final Document
☐ Other: _____

Local Action Type:

- ☐ General Plan Update ☒ Master Plan ☐ Use Permit ☐ Coastal Permit
☐ General Plan Amendment ☐ Planned Unit Development ☐ Land Division (Subdivision, etc.) ☐ Other: _____
☐ General Plan Element ☐ Site Plan ☐ Annexation
☐ Community Plan ☐ Rezone ☐ Redevelopment
☐ Specific Plan ☐ Prezone

Development Type:

- ☒ Residential: Units 348 Acres 33
☐ Office: Sq.ft. _____ Acres _____ Employees _____
☒ Commercial: Sq.ft. 60,000 Acres _____ Employees Hotel
☐ Industrial: Sq.ft. _____ Acres _____ Employees _____
☒ Educational 612,000 sq.ft.
☒ Recreational 140,000 sq.ft.
☐ Water Facilities: Type _____ MGD
☐ Transportation: Type _____
☐ Mining: Mineral _____
☐ Power: Type _____ MW
☐ Waste Treatment: Type _____ MGD
☐ Hazardous Waste: Type _____
☒ Other: 1.5 million sq. ft. of student housing

Project Issues That May Have A Significant Or Potentially Significant Impact:

- ☒ Aesthetic/Visual ☐ Economic/Jobs ☒ Public Services/Facilities ☒ Traffic/Circulation
☐ Agricultural Land ☐ Fiscal ☒ Recreation/Parks ☒ Vegetation
☒ Air Quality ☒ Flood Plain/Flooding ☒ Schools/Universities ☒ Water Quality
☒ Archeological/Historical ☒ Forest Land/Fire Hazard ☐ Septic Systems ☒ Water Supply/Groundwater
☒ Biological Resources ☒ Geologic/Seismic ☒ Sewer Capacity ☒ Wetland/Riparian
☐ Coastal Zone ☒ Minerals ☒ Soil Erosion/ ☒ Growth Inducement
☐ Drainage/Absorption ☒ Noise ☒ Compaction/Grading ☒ Land Use
☒ Population/Housing Balance ☒ Solid Waste ☒ Cumulative Effects
☒ Toxic/Hazardous ☐ Other: _____

Present Land Use/Zoning/General Plan Designation: Institutional/University Campus & Park/R1-500

Project Description: (please use a separate page if necessary)

NOTE: The State Clearinghouse will assign identification numbers for all new projects. If a SCH number already exists for a project (e.g. Notice or Preparation or previous draft document) please fill in.

Revised 2005

Reviewing Agencies Checklist*Appendix C continued**Lead Agencies may recommend State Clearinghouse distribution by marking agencies below.*

<input type="checkbox"/> Air Resources Board	<input type="checkbox"/> Office of Emergency Services
<input checked="" type="checkbox"/> Boating & Waterways, Department of	<input checked="" type="checkbox"/> Office of Historic Preservation
<input checked="" type="checkbox"/> California Highway Patrol	<input checked="" type="checkbox"/> Parks & Recreation
<input checked="" type="checkbox"/> Caltrans District # 11	<input type="checkbox"/> Pesticide Regulation, Department of
<input type="checkbox"/> Caltrans Division of Aeronautics	<input type="checkbox"/> Public Utilities Commission
<input type="checkbox"/> Caltrans Planning	<input type="checkbox"/> Reclamation Board
<input type="checkbox"/> Coachella Valley Mountains	
<input type="checkbox"/> Conservancy	<input checked="" type="checkbox"/> Regional WQCB # 9
<input type="checkbox"/> Coastal Commission	<input checked="" type="checkbox"/> Resources Agency
<input type="checkbox"/> Colorado River Board	<input type="checkbox"/> S.F. Bay Conservation & Development
<input type="checkbox"/> Commission	
<input type="checkbox"/> Conservation, Department of	<input type="checkbox"/> San Gabriel & Lower Los Angeles Rivers
<input type="checkbox"/> Corrections, Department of	<input type="checkbox"/> & Mountains Conservancy
<input type="checkbox"/> Delta Protection Commission	<input type="checkbox"/> San Joaquin River Conservancy
<input type="checkbox"/> Education, Department of	<input type="checkbox"/> Santa Monica Mountains Conservancy
<input type="checkbox"/> Office of Public School Construction	<input type="checkbox"/> State Lands Commission
<input type="checkbox"/> Energy Commission	<input type="checkbox"/> SWRCB: Clean Water Grants
<input checked="" type="checkbox"/> Fish & Game Region # 5	<input type="checkbox"/> SWRCB: Water Quality
<input type="checkbox"/> Food & Agriculture, Department of	<input type="checkbox"/> SWRCB: Water Rights
<input type="checkbox"/> Forestry & Fire Protection	<input type="checkbox"/> Tahoe Regional Planning Agency
<input type="checkbox"/> General Services, Department of	<input checked="" type="checkbox"/> Toxic Substances Control, Department of
<input checked="" type="checkbox"/> Health Services, Department of	<input checked="" type="checkbox"/> Water Resources, Department of
<input type="checkbox"/> Housing & Community Development	
<input type="checkbox"/> Integrated Waste Management Board	Other: _____
<input checked="" type="checkbox"/> Native American Heritage Commission	Other: _____

Local Public Review Period (to be filled in by lead agency)Starting Date June 12, 2007Ending Date July 27, 2007**Lead Agency** (Complete if applicable):Consulting Firm: Gatzke Dillon & Ballance LLPAddress: 1525 Faraday Avenue, Suite 150City/State/Zip: Carlsbad, CA 92008Contact: Michael S. HaberkornPhone: (760) 431-9501Applicant: San Diego State UniversityAddress: 5500 Campanile DriveCity/State/Zip: San Diego, CA 92182Phone: (619) 594-5224Signature of Lead Agency Representative Michael S. HaberkornDate: 06/11/07

Authority cited: Section 21083, Public Resources Code. Reference: Section 21161, Public Resources Code.

**ATTACHMENT A
TO
NOTICE OF COMPLETION & ENVIRONMENTAL DOCUMENT TRANSMITTAL
SCH NO. 2007021020**

Project Description:

Revisions to San Diego State University's ("SDSU") Campus Master Plan to provide a framework for implementing SDSU's goals and programs for the campus by identifying needed buildings, facilities, improvements and services to support campus growth and development from current SDSU enrollment of 25,000 full-time equivalent students ("FTES") to a new Campus Master Plan enrollment of 35,000 FTES by the 2024-25 academic year. To accommodate the projected student increase, the proposed project involves the near-term and long-term development of classroom, housing and student support facilities on approximately 55 acres of land located throughout the SDSU central campus, Alvarado and Adobe Falls Areas.

The proposed project includes six development components: (i) Adobe Falls Faculty/Staff Housing - up to 370 housing units for faculty and staff; (ii) Alvarado Campus - educational and support facilities totaling approximately 612,000 gross square feet of instructional and research space; (iii) Alvarado Hotel - an approximately 60,000 gross square feet building with up to 120 hotel rooms; (iv) Campus Conference Center - meeting/conference space totaling approximately 70,000 gross square feet; (v) Student Housing - student residences providing approximately 2,976 additional beds; and (vi) Student Union/Aztec Center Expansion and Renovation - social space, meeting space, recreation facilities, student organization offices, food services, and retail services within renovated and expanded, by approximately 70,000 gross square feet, Aztec Center.

NOTICE OF AVAILABILITY
OF DRAFT ENVIRONMENTAL IMPACT REPORT
SDSU 2007 CAMPUS MASTER PLAN REVISION

Notice of Availability. San Diego State University ("SDSU") has prepared a Draft Environmental Impact Report ("EIR") (SCH No. 2007021020) to analyze the potential environmental effects of the proposed SDSU 2007 Campus Master Plan Revision ("proposed project"). The proposed project component sites are located throughout the SDSU campus in San Diego, California.

The 2007 Campus Master Plan Revision will provide a framework for implementing SDSU's goals and programs for the campus by identifying needed buildings, facilities, improvements and services to support campus growth and development from the current SDSU enrollment of 25,000 full-time equivalent students ("FTES") to a new Campus Master Plan enrollment of 35,000 FTES by the 2024-25 academic year. The increase in FTES will equate to a gradual increase in total student enrollment of an estimated 11,385 students by 2024-25. To accommodate the projected student increase, the proposed project involves the near-term and long-term development of classroom, student housing, faculty/staff housing, research, and student support facilities on approximately 55 acres of land located within the SDSU central campus, Alvarado and Adobe Falls areas. The proposed project will enable SDSU to meet projected increases in student demand for higher education, as well as further enhance SDSU's status as a premier undergraduate, graduate and research university.

The Draft EIR determined that the proposed project would result in significant and unavoidable impacts to aesthetics/visual quality, air quality, and transportation/circulation. The Draft EIR further determined that any potentially significant impacts associated with the following environmental impact categories would be mitigated to a level below significant: Biological Resources; Cultural Resources; Geotechnical/Soils; Hazards and Hazardous Materials; Hydrology and Water Quality; Land Use and Planning; Noise; Paleontological Resources; Population and Housing; and, Public Utilities and Service Systems.

Public Review Period. The Draft EIR will be available for public review and comment for a 45-day period, beginning June 12, 2007, and ending on July 27, 2007. Written comments regarding environmental issues raised in the Draft EIR must be received by mail or facsimile no later than 5:00 P.M., Friday, July 27, 2007. Please direct all comments to:

Lauren Cooper
Associate Director, Department of Facilities Planning, Design and Construction
Administration Building, Room 130
San Diego State University
5500 Campanile Drive
San Diego, California 92182-1624
Fax: (619) 594-4500

Copies of the Draft EIR are available for review at the following locations: (1) College Rolando Branch Library, 6600 Montezuma Road, San Diego, California; (2) Allied Gardens/Benjamin Branch Library, 5188 Zion Avenue, San Diego, California; and (3) SDSU Love Library, Government Publications, 3rd Floor. Copies of the Draft EIR and all reference materials also are available for review at SDSU Department of Facilities Planning, Design and Construction, Administration Building, Room 130, contact person: Lauren Cooper, Project Manager, (619) 594-5224. The Draft EIR also is available for review on the internet at www.sdsu.edu/masterplan. Copies of the Draft EIR may be purchased by contacting Vinnie Fitzgerald, Legal Reprographics, 110 W. "C" Street, Suite 1600, San Diego, California 92101, (619) 234-0660.

Lili Mansour

SDSU 2007

Draft EIR

From: webship@gso.com
Sent: Tuesday, June 12, 2007 9:24 AM
To: Lili Mansour
Subject: GSO Shipment Delivery Notification - 507263590

DELIVERY NOTIFICATION:

Tracking Number: 507263590

Ship Date: 06/11/2007

Ship From: LILI MANSOUR, GATZKE DILLION & BALLANCE LLP

Ship To: SCOTT MORGAN, SENIOR PLANNER, STATE OF CALIFORNIA, CLEARINGHOUSE AND
PLANNING UN
GOVERNOR'S OFFICE OF PLANNING AND RESEARCH 1400 TENTH STREET
SACRAMENTO CA 95812

Billing Reference: 501.13

Delivery Date: Jun 12, 2007 08:54 AM

Signed By: A. Smith

SENDER COMMENTS:

No sender comments for this shipment

Please use the following link to track the history of this shipment online: <http://www.gso.com/deliveryinforequest.aspx?trackingnum=507263590>

Please DO NOT REPLY TO THIS MESSAGE. For general inquiries, contact GSO customer service at 1-800-322-5555

Visit us at: <http://www.gso.com>

This email and any files transmitted with it are confidential and intended solely for the use of the individual or entity to whom they are addressed. If you are not the intended recipient of this email, you are notified that disclosing, copying, distributing this message is strictly prohibited. If you have received this email in error, please delete it immediately.

COMMUNITY OUTREACH SCHEDULE

SDSU 2007 CAMPUS MASTER PLAN REVISION

COMPLETED MEETINGS/PRESENTATIONS

DATE	NAME/ORGANIZATION
Dec 20, 2006	Senator Christine Kehoe
Jan 3, 2007	Mayor Jerry Sanders
Jan 4, 2007	San Diego Regional Chamber of Commerce leadership
Jan 11, 2007	Julie Meier Wright, San Diego Regional Economic Development Corp.
Jan 15, 2007	Assemblyman Joel Anderson's staff
Jan 17, 2007	Campus Deans
Jan 24, 2007	Councilman Jim Madaffer
Jan 25, 2007	UT Editorial Briefing
Jan 25, 2007	Ambassadors for Higher Education
Jan 26, 2007	Assemblymember Shirley Horton
Jan 30, 2007	City of San Diego staff
Jan 30, 2007	Del Cerro Action Council leadership
Feb 6, 2007	Faculty Senate
Feb 7, 2007	Media briefings
Feb 14, 2007	College Area Community Council
Feb 21, 2007	Matt Adams, Navajo Community Planners
Feb 21, 2007	EIR Scoping meeting
Feb 22, 2007	Councilman Kevin Faulconer
Feb 26, 2007	Navajo Community Planners
Feb 27, 2007	Councilman Tony Young
Mar 5, 2007	San Diego Police Dept.
Mar 6, 2007	Councilman Ben Hueso
Mar 7, 2007	Press conference re: mini-dorms
Mar 8, 2007	Gary Gallegos/Bob Leiter, SANDAG
Mar 9, 2007	Dr. Salimpour/Harris Koenig, Alvarado Hospital
Mar 12, 2007	"These Days" on KPBS
Mar 12, 2007	San Diego Regional Chamber of Commerce CEO Roundtable
Mar 13, 2007	San Diego Regional Chamber of Commerce Transportation Committee
Mar 15, 2007	Hearst Elementary School Principal
Mar 15, 2007	SDSU Alumni Board
Mar 15, 2007	Senator Hollingsworth's staff
Mar 19, 2007	Assemblyman George Plescia's staff
Mar 20, 2007	San Diego Fire Department
Mar 20, 2007	Supervisor Dianne Jacob
Mar 22, 2007	Del Cerro Action Council
Mar 27, 2007	Senator Christine Kehoe's staff
Mar 28, 2007	Del Cerro Action Council leadership
Apr 2, 2007	Supervisor Ron Roberts
Apr 2, 2007	Assemblymember Mary Salas' staff
Apr 4, 2007	SDSU Associated Students Executive Committee
Apr 4, 2007	Assemblymember Lori Saldana's staff
Apr 5, 2007	Supervisor Greg Cox
Apr 12, 2007	Councilman Scott Peters
Apr 12, 2007	Councilmember Donna Frye
Apr 16, 2007	Media briefings
Apr 18, 2007	San Diego Regional Chamber of Commerce Housing Committee
Apr 20, 2007	Senator Denise Ducheny's staff
May 1, 2007	San Diego Regional Economic Development Corp.

DATE	NAME/ORGANIZATION
May 3, 2007	San Diego Regional Chamber of Commerce Infrastructure Committee
May 3, 2007	Supervisor Bill Horn
May 7, 2007	Asian Business Association Governmental Affairs Committee
May 23, 2007	Urban League
May 25, 2007	Supervisor Pam Slater-Price
May 25, 2007	Councilmember Toni Atkins' office
Jun 4, 2007	Senator Christine Kehoe's staff
Jun 8, 2007	Aztec Parents
Jun 8, 2007	Del Cerro Action Council leadership
Jun 18, 2007	Navajo Community Planners
Jun 19, 2007	MAAC Project
Jun 20, 2007	Associated General Contractors
Jun 20, 2007	San Diego Regional Chamber of Commerce Housing Committee
Jun 22, 2007	CommNexus
Jun 28, 2007	Biocom Facilities Committee
Jun 28, 2007	Del Cerro Action Council
Jul 2, 2007	College Area Community Council Planning Subcommittee
Jul 3, 2007	Senator Dennis Hollingsworth's staff
Jul 5, 2007	Assemblymember Shirley Horton's staff
Jul 9, 2007	Assemblyman Joel Anderson's staff
Jul 10, 2007	San Diego Regional Chamber of Commerce Transportation Committee
Jul 12, 2007	Del Cerro Action Council
Jul 16, 2007	College Area Community Council Planning Subcommittee
Jul 16, 2007	Navajo Community Planners
Jul 17, 2007	Assemblyman George Plescia's staff
Jul 18, 2007	SDSU Associated Students
Jul 19, 2007	Senator Denise Ducheny's staff
Jul 19, 2007	Assemblymember Lori Saldana's staff
July 19, 2007	San Diego Hispanic Chamber of Commerce Board of Directors
Jul 25, 2007	College Area Community Council
Aug 2, 2007	San Diego Regional Chamber of Commerce Infrastructure Committee
Aug 16, 2007	San Diego Convention & Visitors Bureau
Aug 17, 2007	Biocom Public Policy Committee
Aug 21, 2007	San Diego Regional Chamber of Commerce Public Policy Committee
Aug 21, 2007	Assemblymember Mary Salas' staff
Aug 23, 2007	San Diego Regional Chamber of Commerce Board of Directors
Sep 6, 2007	SDSU Alumni Association
Sep 12, 2007	San Diego Workforce Partnership

POWER POINT PRESENTATION

2007 CAMPUS MASTER PLAN REVISION



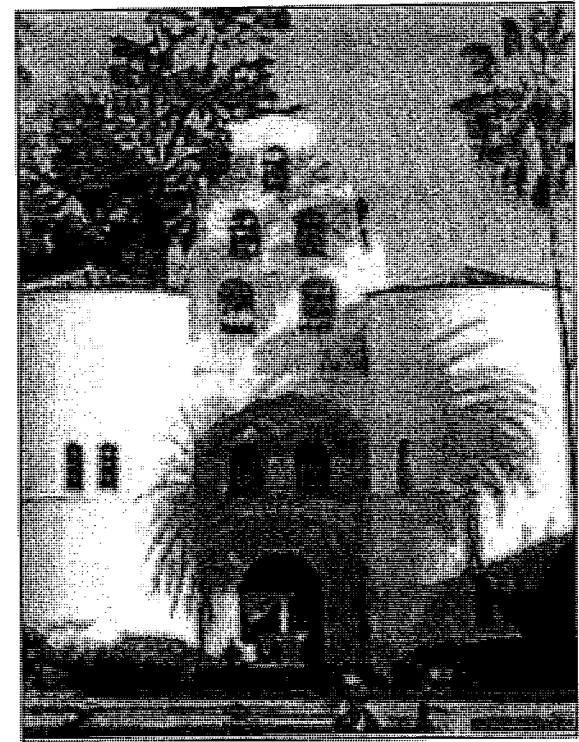
SAN DIEGO STATE
UNIVERSITY



SAN DIEGO STATE
UNIVERSITY

Need for Master Plan Revision

- **Meet demand for higher education**
 - Over 82% of growth in higher education in Southern California
 - SDSU received 57,600 applications for 9,000 openings
- **Enable SDSU to continue as a major engine for the region's workforce**
 - Growing economy requires more educated workers
 - CA projected to have serious shortage of college educated workers by 2020
- **Plan is critical to ensuring SDSU can fulfill its mission**





SAN DIEGO STATE
UNIVERSITY

SDSU's Regional Impact

- **Serving California and San Diego region for over 110 years**
 - **Producing leaders in:**
 - Industry
 - Health Care
 - The Arts
 - Sciences
 - Education
 - Government
 - **Major contributor to region's workforce**
 - 2/3 of region's teachers
 - Majority of region's baccalaureate nurses
 - Half of region's engineers
 - **Generating \$2.4 billion regional impact**
-

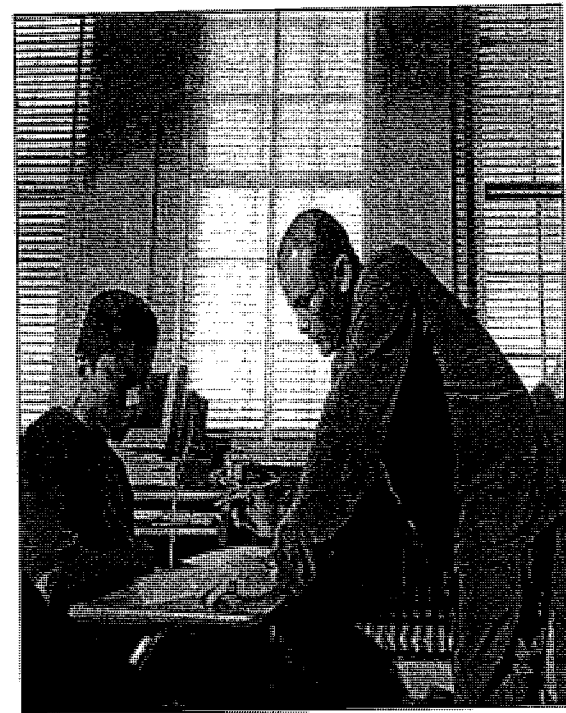




SAN DIEGO STATE
UNIVERSITY

Community Focus

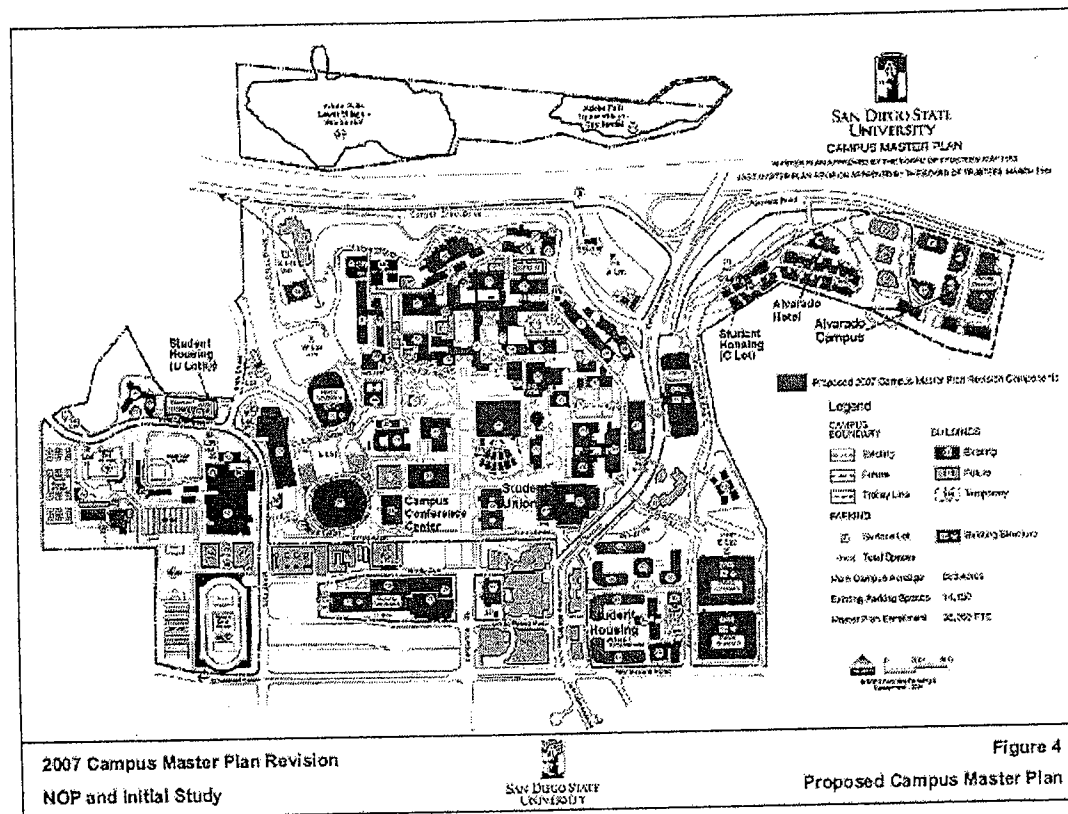
- **Respond to workforce needs**
 - Nurses Now
 - Hospitality & Tourism Management
 - Research leader
- **Community service is a cornerstone of the SDSU experience**
 - SDSU students volunteer thousands of hours each year for community service
- **Community-focused programs include**
 - SDSU/Sweetwater Compact for Success
 - City Heights Educational Collaborative
- **Commitment to diversity**
 - One of the top universities in nation for number of degrees awarded to minorities





SAN DIEGO STATE
UNIVERSITY

Comprehensive Plan to Meet Educational Needs

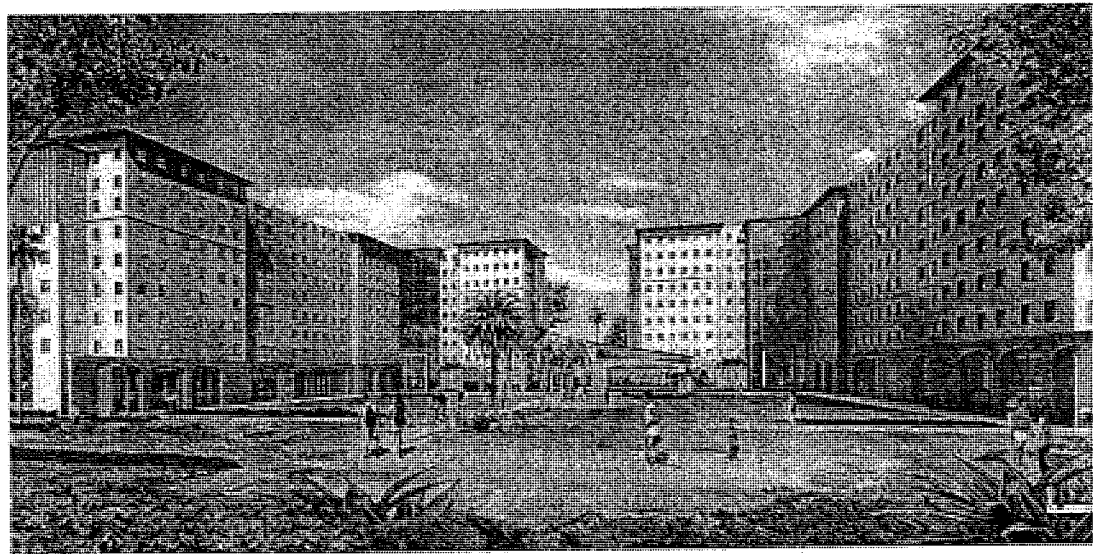




SAN DIEGO STATE
UNIVERSITY

Student Housing

- 2,976 new student beds on campus – nearly double existing number
- Off-campus housing managed by SDSU projected to significantly increase
- Nearly 10,000 SDSU-managed beds by 2025 (on and off-campus)
- Encouraging private student housing around trolley stations

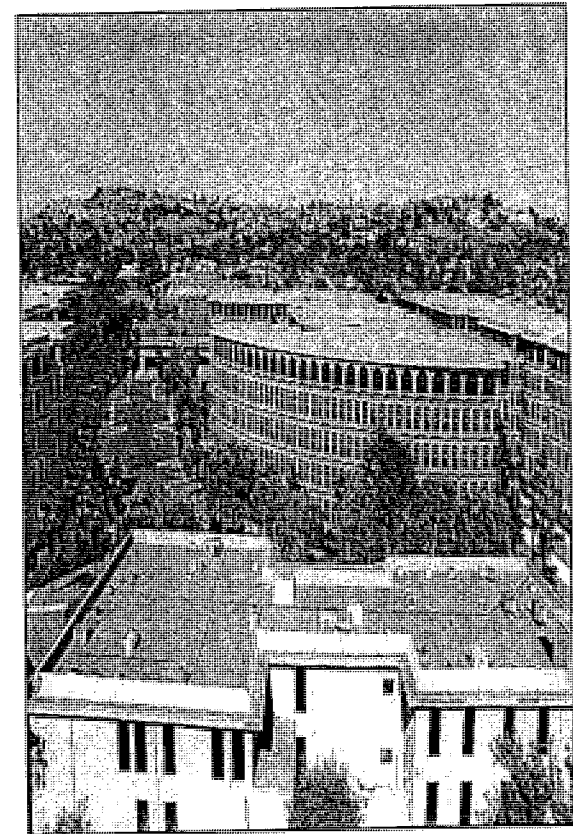




SAN DIEGO STATE
UNIVERSITY

Alvarado Campus

- **SDSU Research Foundation-owned land**
- **Future academic, research & support facilities for:**
 - College of Education
 - College of Engineering
 - College of Health & Human Services
 - College of Sciences
- **Will include space for existing medical/office tenants**
- **Consistent with plans proposed in College Community Redevelopment Plan**

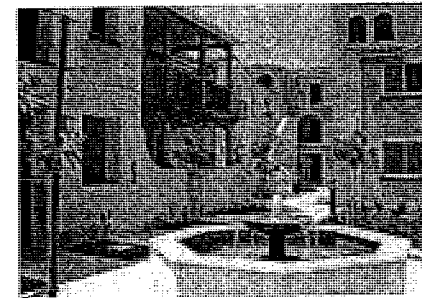
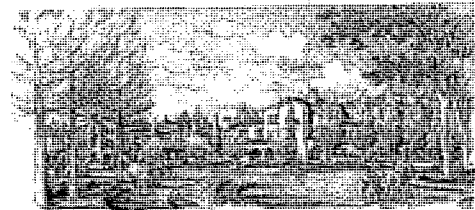




SAN DIEGO STATE
UNIVERSITY

Adobe Falls Faculty & Staff Housing

- High housing costs hinder faculty/staff recruitment and retention
- Affordable housing for SDSU faculty & staff
- 172-348 homes phased over several years
 - First phase = 48 units
 - Later phases = 124 to 300 units
 - Higher number of units depends on securing alternative access
- No significant traffic impacts on residential streets
- Public trails to access falls and open space
- Preservation/enhancement of native habitat and wetlands



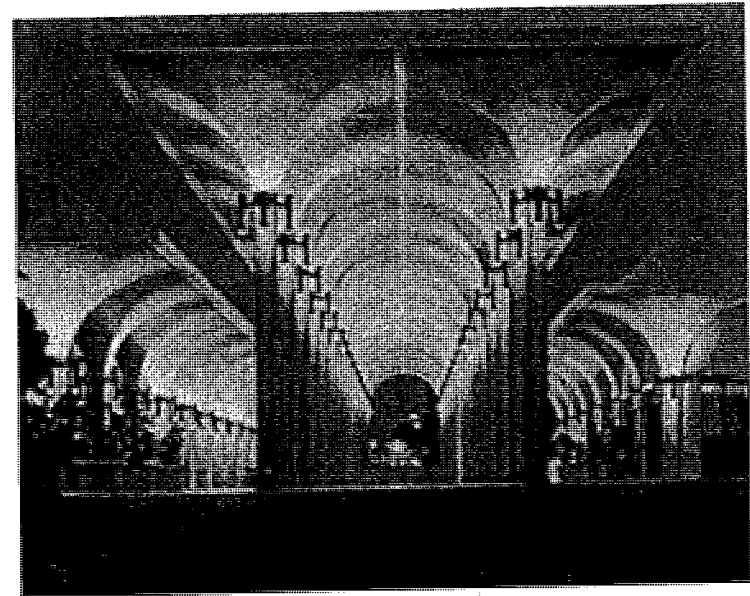
ADOBE FALLS FACULTY STAFF
HOUSING CONCEPTS
COURTESY OF CSU CHANNEL ISLANDS



SAN DIEGO STATE
UNIVERSITY

Student Union Expansion & University Conference Center

- Existing Aztec Center will be expanded and renovated
- Will provide additional space for:
 - Meetings/conferences
 - Food & retail services
 - Student organization offices
 - Recreational facilities
- New university conference center adjacent to Cox Arena

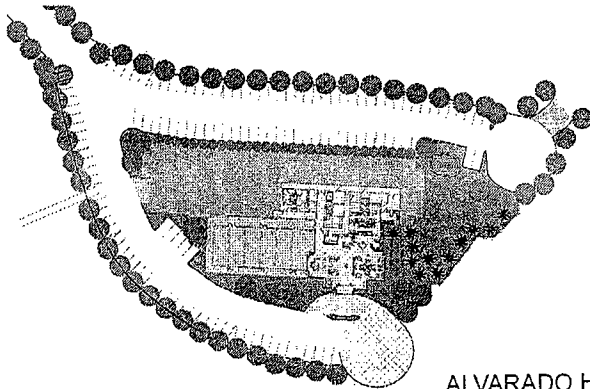




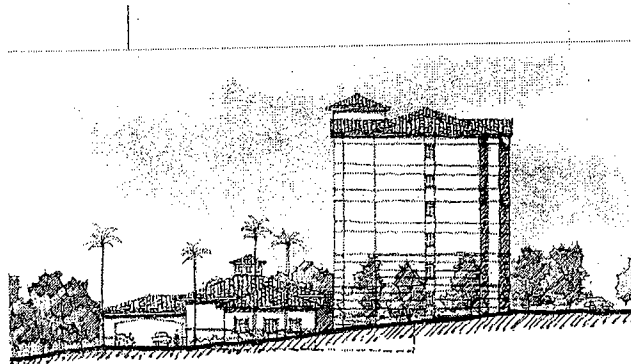
SAN DIEGO STATE
UNIVERSITY

Alvarado Hotel

- Up to 120-rooms and studio suites
- Nearby accommodations for guests of the university, visiting scholars and conference attendees
- Operated in cooperation with SDSU's Hospitality & Tourism Management Program



ALVARADO HOTEL PROPOSED SITE PLAN



PROPOSED MASSING





SAN DIEGO STATE
UNIVERSITY

Draft EIR

- **Draft EIR released for public review on June 13, 2007**
 - **Proposes mitigation for 34 off-site road improvements**
 - **Ongoing discussions with City of San Diego re: fair share contributions**
 - **Funding request to State Legislature**
-



SAN DIEGO STATE
UNIVERSITY

Master Plan Review Process

- **SDSU committed to community outreach**
 - Community Groups
 - Neighbors
 - Regional stakeholders
 - **Draft EIR comment period closed on July 27, 2007**
 - **Board of Trustees will consider adoption of EIR in September 2007**
-



SAN DIEGO STATE
UNIVERSITY

We need your support

- **Your endorsement will help ensure access to higher education for future generations of students**
- **Supported plan in 2005**
 - Revised plan to incorporate public input
 - Fair share mitigation proposed

THANK YOU FOR YOUR CONSIDERATION
